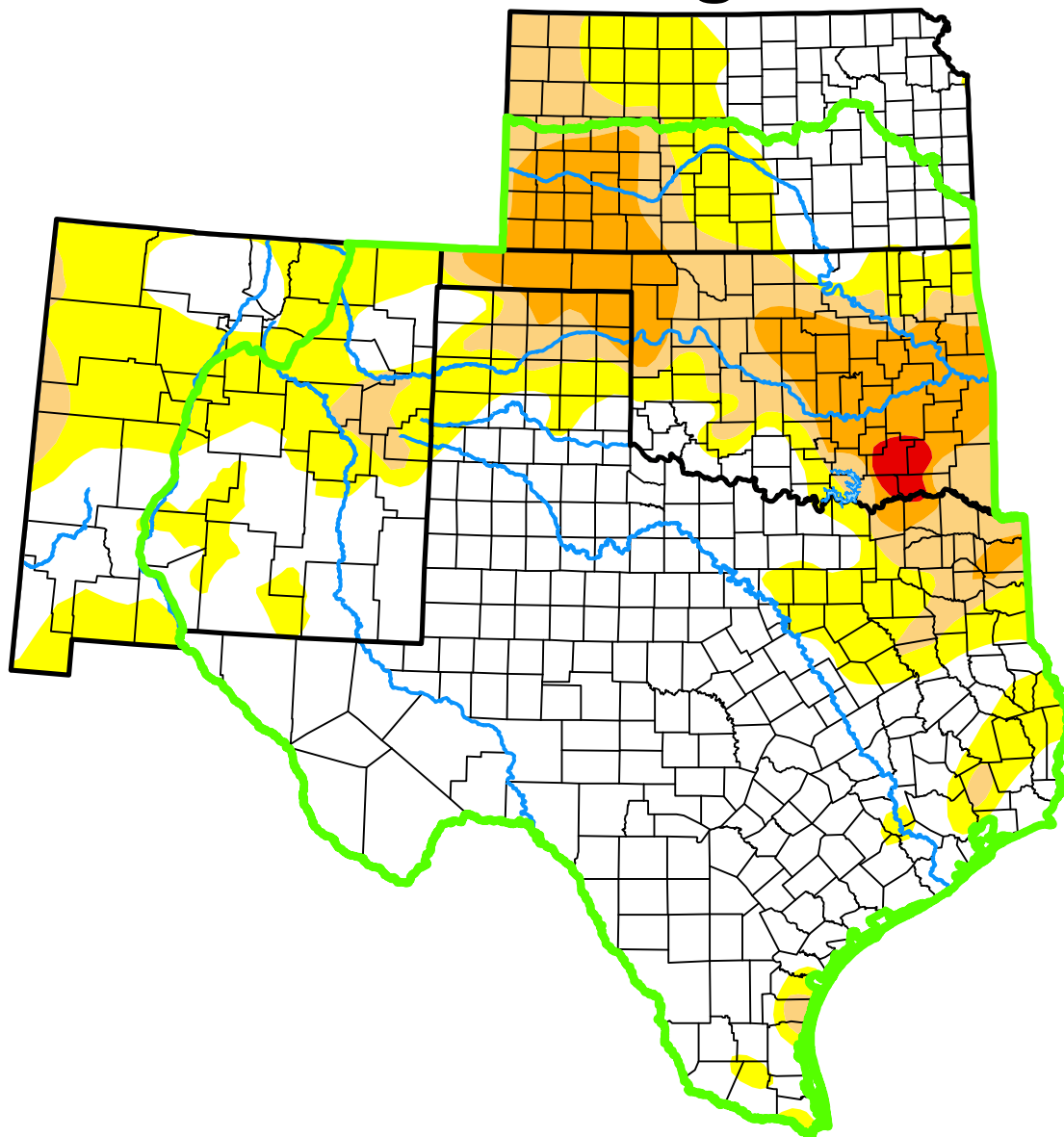


U.S. Drought Monitor

Southern Plains DEWS and Surrounding Areas



December 20, 2016
(Released Thursday, Dec. 22, 2016)
Valid 7 a.m. EST

Drought Conditions (Percent Area)

	None	D0-D4	D1-D4	D2-D4	D3-D4	D4
Current	61.00	39.00	20.85	10.45	0.52	0.00
Last Week <i>12-13-2016</i>	62.00	38.00	20.66	9.49	0.52	0.00
3 Months Ago <i>09-20-2016</i>	85.82	14.18	3.12	0.45	0.00	0.00
Start of Calendar Year <i>12-29-2015</i>	96.54	3.46	0.00	0.00	0.00	0.00
Start of Water Year <i>09-27-2016</i>	85.87	14.13	3.85	0.48	0.00	0.00
One Year Ago <i>12-22-2015</i>	96.46	3.54	0.00	0.00	0.00	0.00

(Statistics for area highlighted in green)

Intensity:

None	D2 Severe Drought
D0 Abnormally Dry	D3 Extreme Drought
D1 Moderate Drought	D4 Exceptional Drought

The Drought Monitor focuses on broad-scale conditions. Local conditions may vary. For more information on the Drought Monitor, go to <https://droughtmonitor.unl.edu/About.aspx>

Author:

Brad Rippey
U.S. Department of Agriculture



droughtmonitor.unl.edu