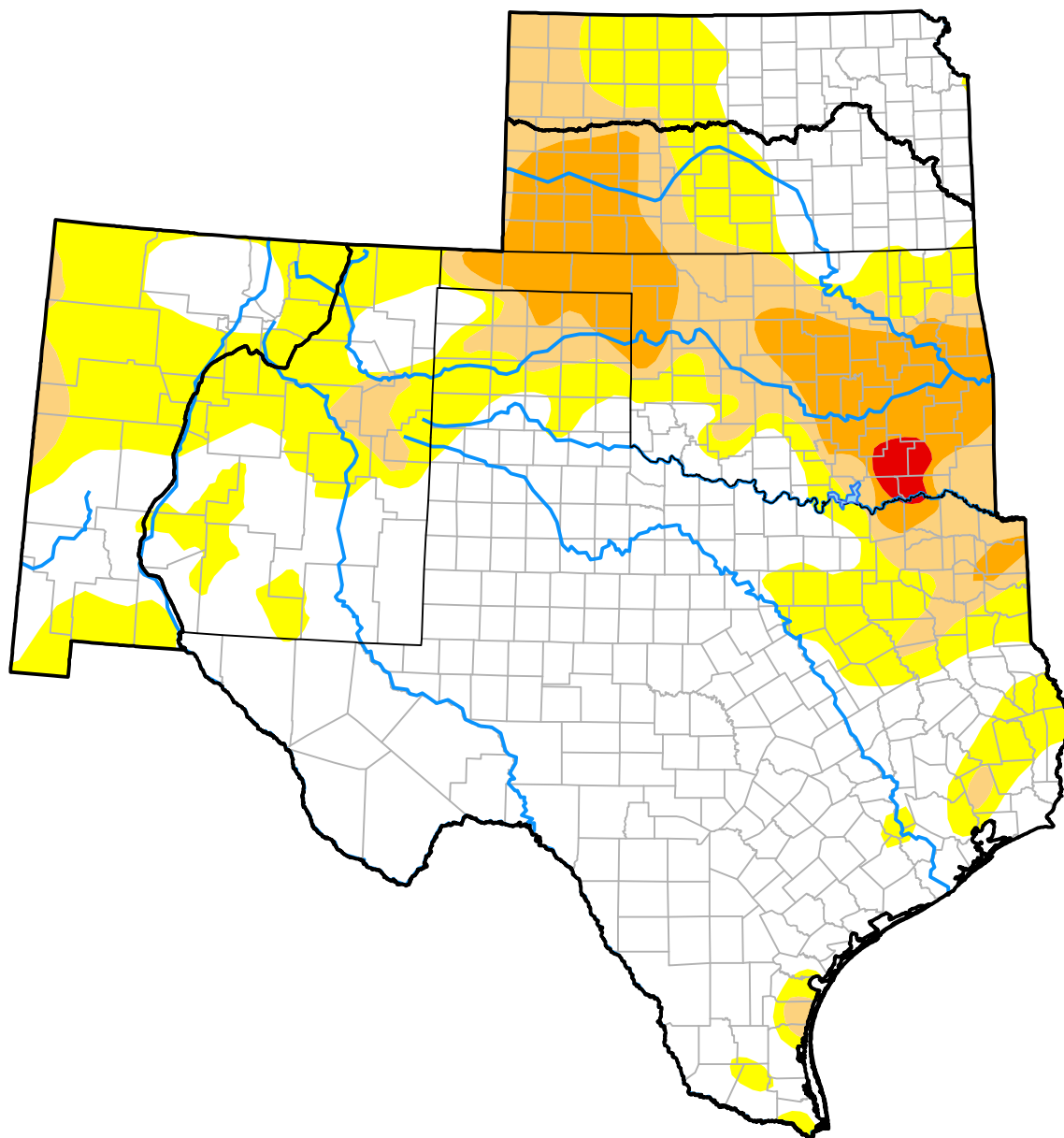


U.S. Drought Monitor

Southern Plains RDEWS

December 20, 2016
(Released Thursday, Dec. 22, 2016)
 Valid 7 a.m. EST



Drought Conditions (Percent Area)

	None	D0-D4	D1-D4	D2-D4	D3-D4	D4
Current	60.25	39.75	16.84	7.63	0.50	0.00
Last Week <i>12-15-2016</i>	61.19	38.81	16.67	6.70	0.50	0.00
3 Months Ago <i>09-22-2016</i>	78.06	21.94	3.59	0.44	0.00	0.00
Start of Calendar Year <i>12-31-2015</i>	90.39	9.61	0.00	0.00	0.00	0.00
Start of Water Year <i>09-29-2016</i>	78.11	21.89	4.30	0.47	0.00	0.00
One Year Ago <i>12-24-2015</i>	90.73	9.27	0.00	0.00	0.00	0.00

Intensity:

None	D2 Severe Drought
D0 Abnormally Dry	D3 Extreme Drought
D1 Moderate Drought	D4 Exceptional Drought

The Drought Monitor focuses on broad-scale conditions. Local conditions may vary. For more information on the Drought Monitor, go to <https://droughtmonitor.unl.edu/About.aspx>

Author:

Brad Rippey
 U.S. Department of Agriculture



droughtmonitor.unl.edu