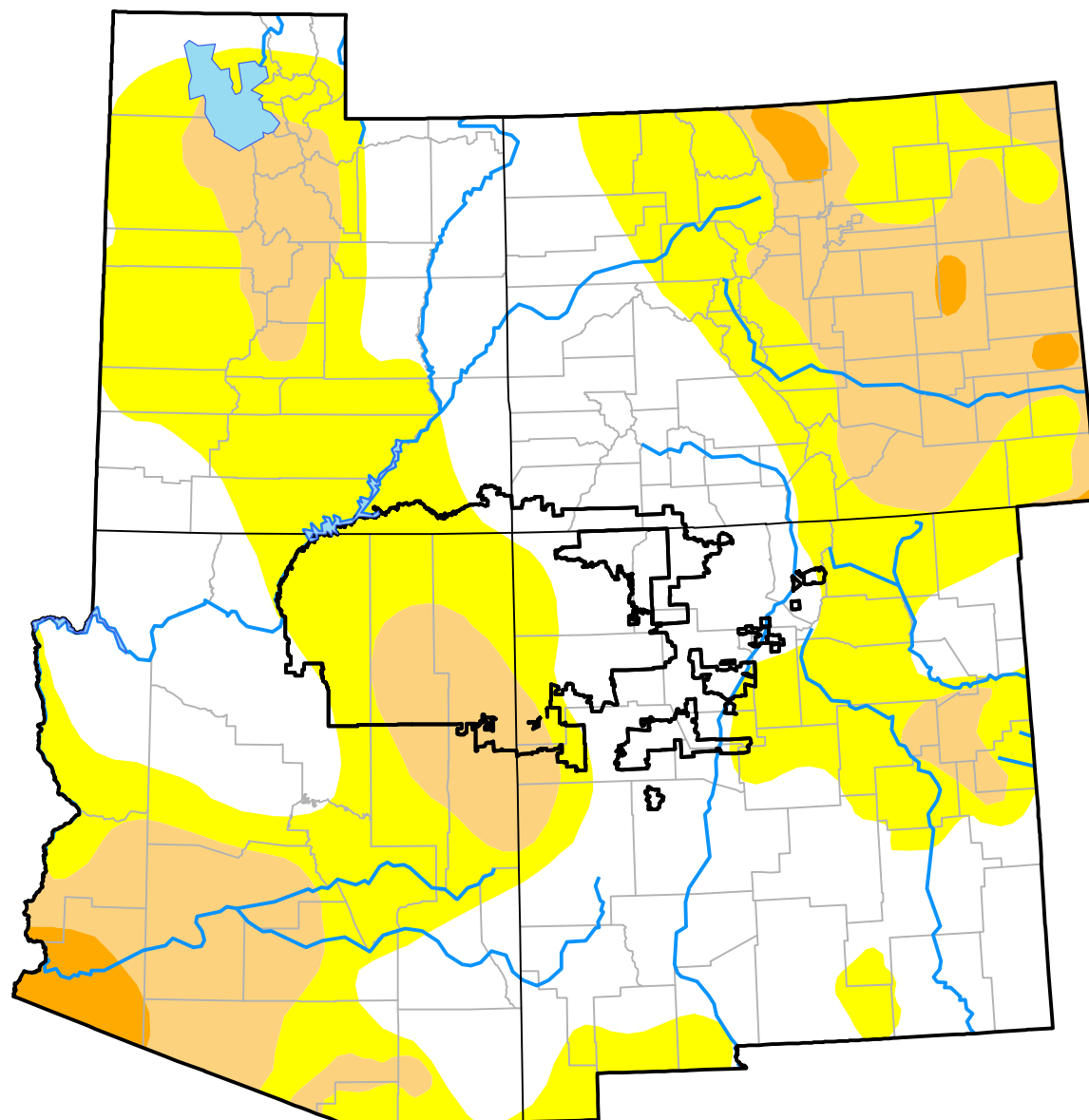
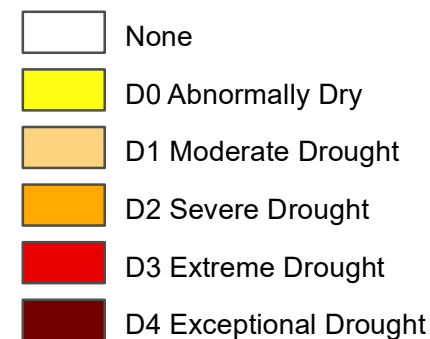


# Southwest Corners RDEWS and Surrounding Areas

(Released Thursday, Dec. 29, 2016)  
Valid 7 a.m. EST



Intensity:



*The Drought Monitor focuses on broad-scale conditions. Local conditions may vary. For more information on the Drought Monitor, go to <https://droughtmonitor.unl.edu/About.aspx>*

Author:

Brad Rippey  
U.S. Department of Agriculture

