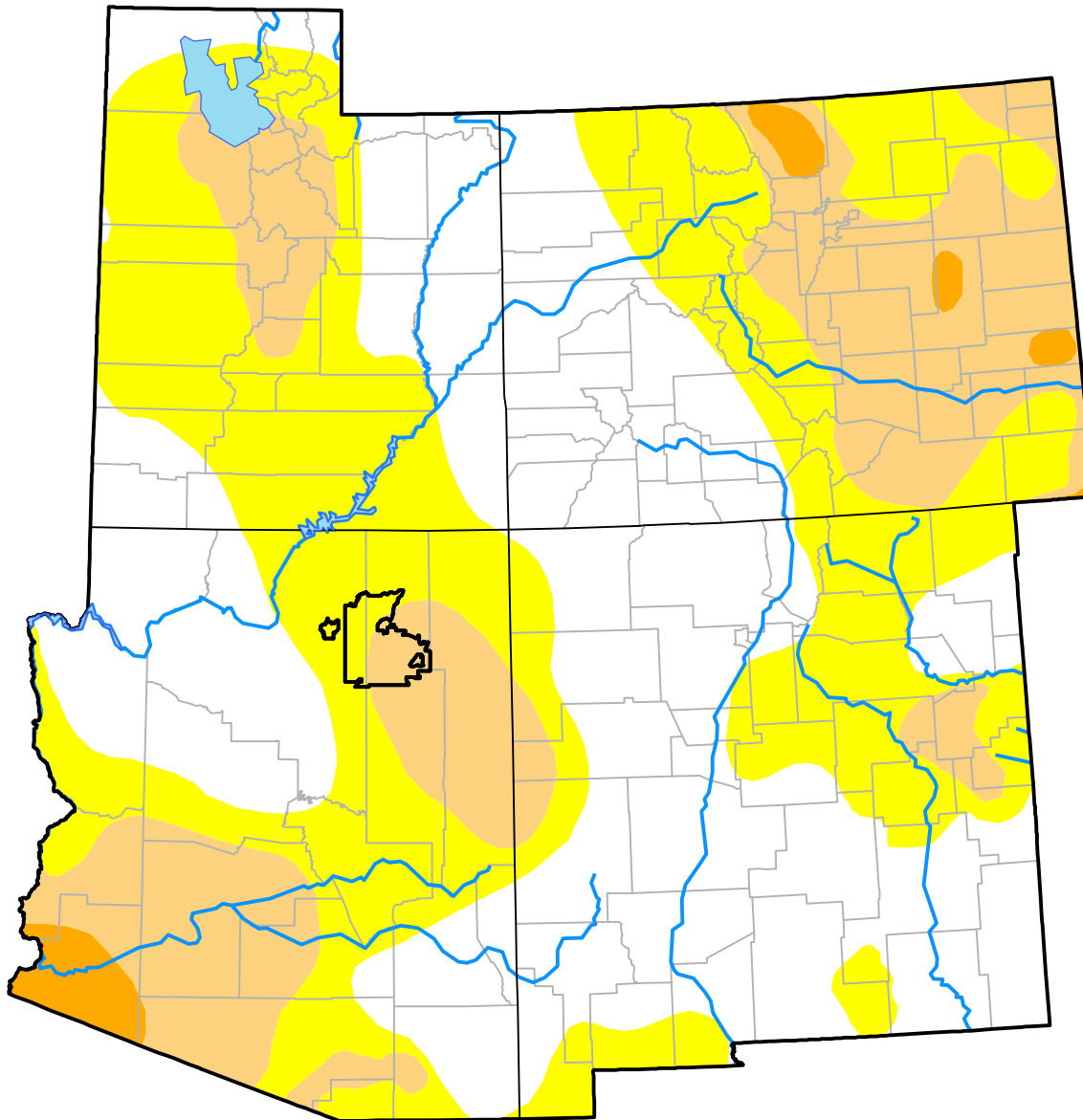


U.S. Drought Monitor Hopi RDEWS

December 27, 2016
(Released Thursday, Dec. 29, 2016)
Valid 7 a.m. EST

Drought Conditions (Percent Area)

	None	D0	D1	D2	D3	D4
Current	0.00	50.32	49.68	0.00	0.00	0.00
Last Week <i>12-22-2016</i>	0.00	50.32	49.68	0.00	0.00	0.00
3 Months Ago <i>09-29-2016</i>	0.00	50.32	49.68	0.00	0.00	0.00
Start of Calendar Year <i>12-31-2015</i>	0.00	100.00	0.00	0.00	0.00	0.00
Start of Water Year <i>09-29-2016</i>	0.00	50.32	49.68	0.00	0.00	0.00
One Year Ago <i>12-31-2015</i>	0.00	100.00	0.00	0.00	0.00	0.00



Intensity:



The Drought Monitor focuses on broad-scale conditions. Local conditions may vary. For more information on the Drought Monitor, go to <https://droughtmonitor.unl.edu/About.aspx>

Author:

Brad Rippey
U.S. Department of Agriculture



droughtmonitor.unl.edu