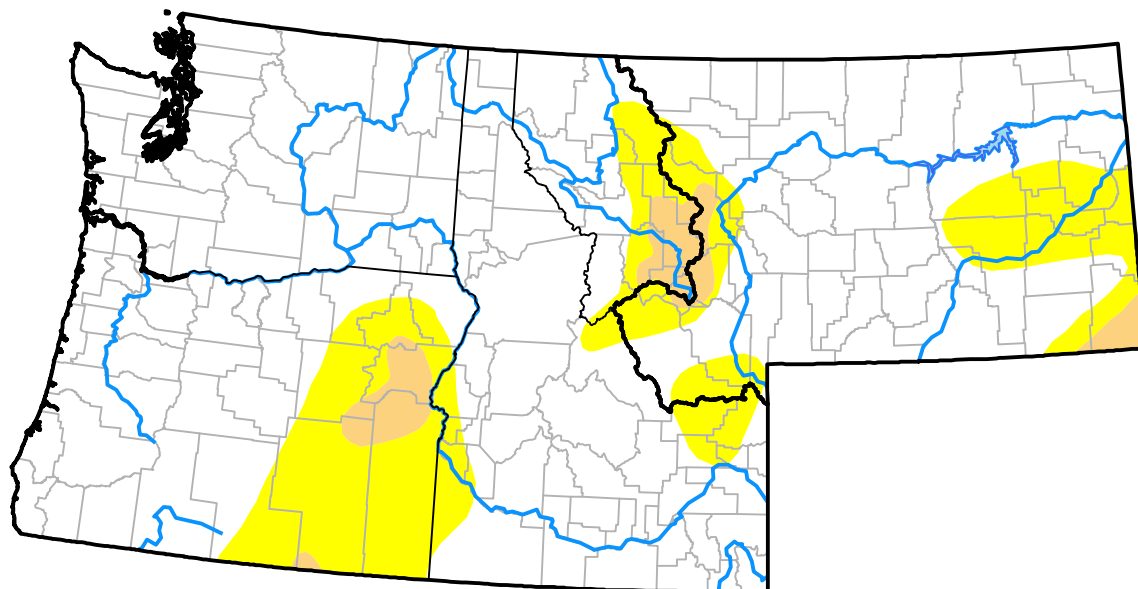


Northwest RDEWS and Surrounding Areas



Drought Conditions (Percent Area)

| | None | D0-D4 | D1-D4 | D2-D4 | D3-D4 | D4 |
|---|-------|-------|-------|-------|-------|------|
| Current | 79.78 | 20.22 | 3.12 | 0.00 | 0.00 | 0.00 |
| Last Week 12-22-2016 | 76.47 | 23.53 | 7.75 | 0.77 | 0.00 | 0.00 |
| 3 Months Ago 09-29-2016 | 21.83 | 78.17 | 25.39 | 5.20 | 0.12 | 0.00 |
| Start of Calendar Year 12-31-2015 | 34.29 | 65.71 | 49.19 | 29.44 | 11.27 | 0.00 |
| Start of Water Year 09-29-2016 | 21.83 | 78.17 | 25.39 | 5.20 | 0.12 | 0.00 |
| One Year Ago 12-31-2015 | 34.29 | 65.71 | 49.19 | 29.44 | 11.27 | 0.00 |

Intensity:

| | |
|---------------------|------------------------|
| None | D2 Severe Drought |
| D0 Abnormally Dry | D3 Extreme Drought |
| D1 Moderate Drought | D4 Exceptional Drought |

The Drought Monitor focuses on broad-scale conditions. Local conditions may vary. For more information on the Drought Monitor, go to <https://droughtmonitor.unl.edu/About.aspx>

Author:

Brad Rippey
U.S. Department of Agriculture

