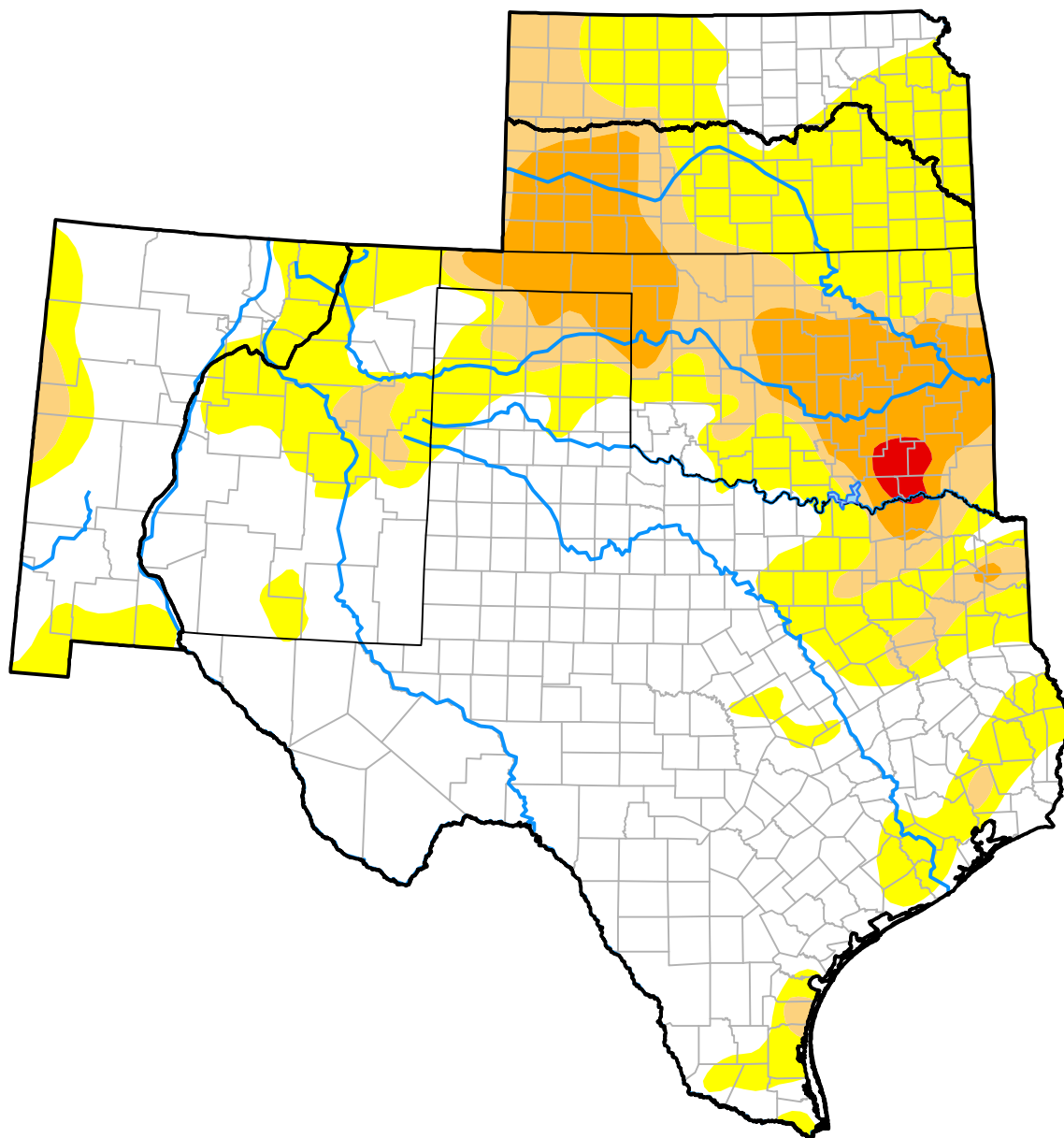


# U.S. Drought Monitor

## Southern Plains RDEWS

**December 27, 2016**  
*(Released Thursday, Dec. 29, 2016)*  
 Valid 7 a.m. EST



*Drought Conditions (Percent Area)*

	None	D0-D4	D1-D4	D2-D4	D3-D4	D4
<b>Current</b>	62.36	37.64	16.25	8.03	0.50	0.00
<b>Last Week</b> <i>12-22-2016</i>	60.25	39.75	16.84	7.63	0.50	0.00
<b>3 Months Ago</b> <i>09-29-2016</i>	78.11	21.89	4.30	0.47	0.00	0.00
<b>Start of Calendar Year</b> <i>12-31-2015</i>	90.39	9.61	0.00	0.00	0.00	0.00
<b>Start of Water Year</b> <i>09-29-2016</i>	78.11	21.89	4.30	0.47	0.00	0.00
<b>One Year Ago</b> <i>12-31-2015</i>	90.39	9.61	0.00	0.00	0.00	0.00

### Intensity:

None	D2 Severe Drought
D0 Abnormally Dry	D3 Extreme Drought
D1 Moderate Drought	D4 Exceptional Drought

*The Drought Monitor focuses on broad-scale conditions. Local conditions may vary. For more information on the Drought Monitor, go to <https://droughtmonitor.unl.edu/About.aspx>*

### Author:

Brad Rippey  
 U.S. Department of Agriculture



**droughtmonitor.unl.edu**