

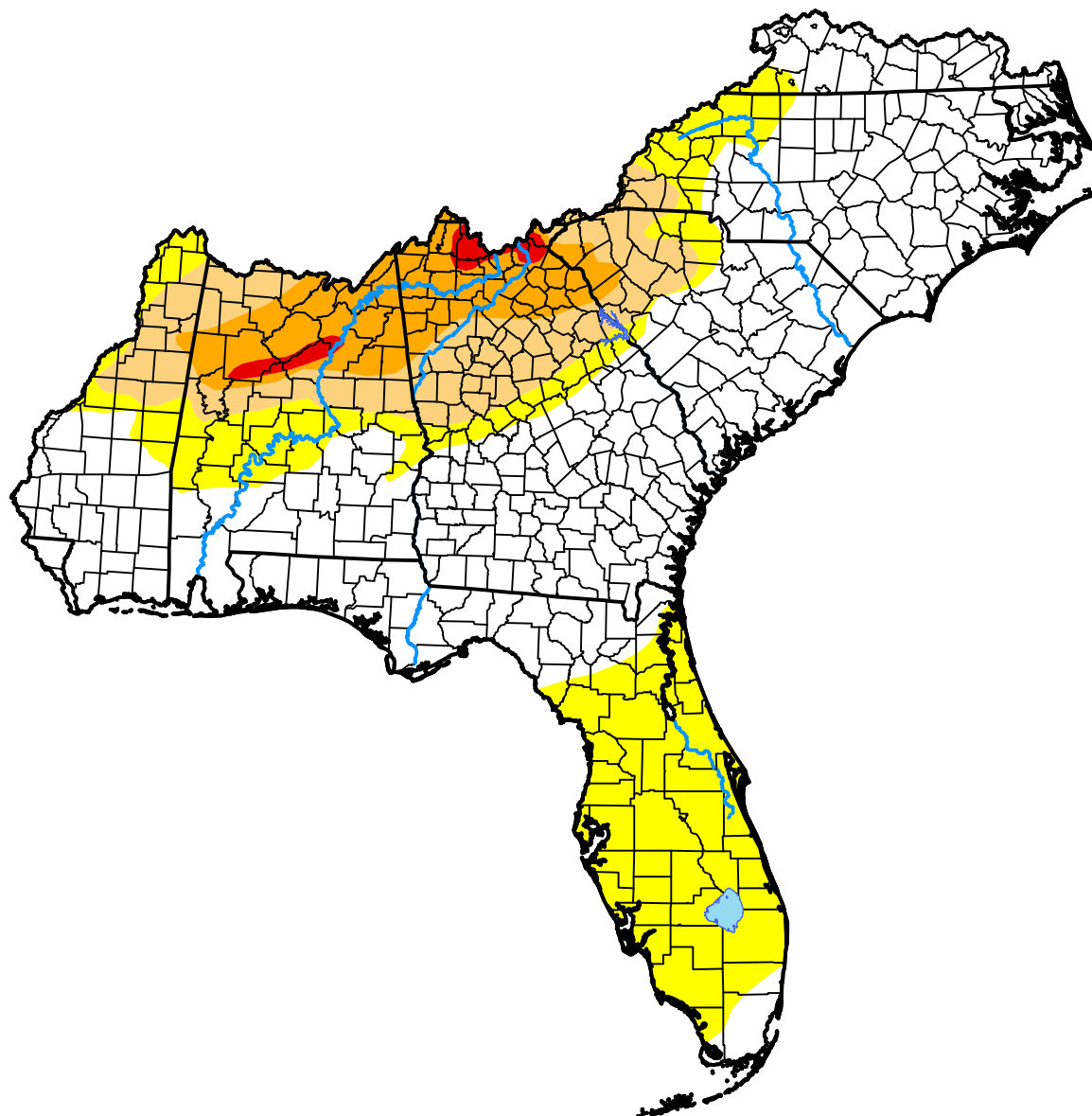
*U.S. Drought Monitor*

# South Atlantic-Gulf Watershed

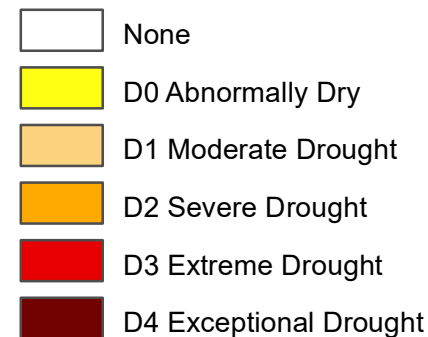
**January 24, 2017**

*(Released Thursday, Jan. 26, 2017)*

Valid 7 a.m. EST



**Intensity:**



*The Drought Monitor focuses on broad-scale conditions. Local conditions may vary. For more information on the Drought Monitor, go to <https://droughtmonitor.unl.edu/About.aspx>*

**Author:**

Richard Tinker  
CPC/NOAA/NWS/NCEP



**droughtmonitor.unl.edu**