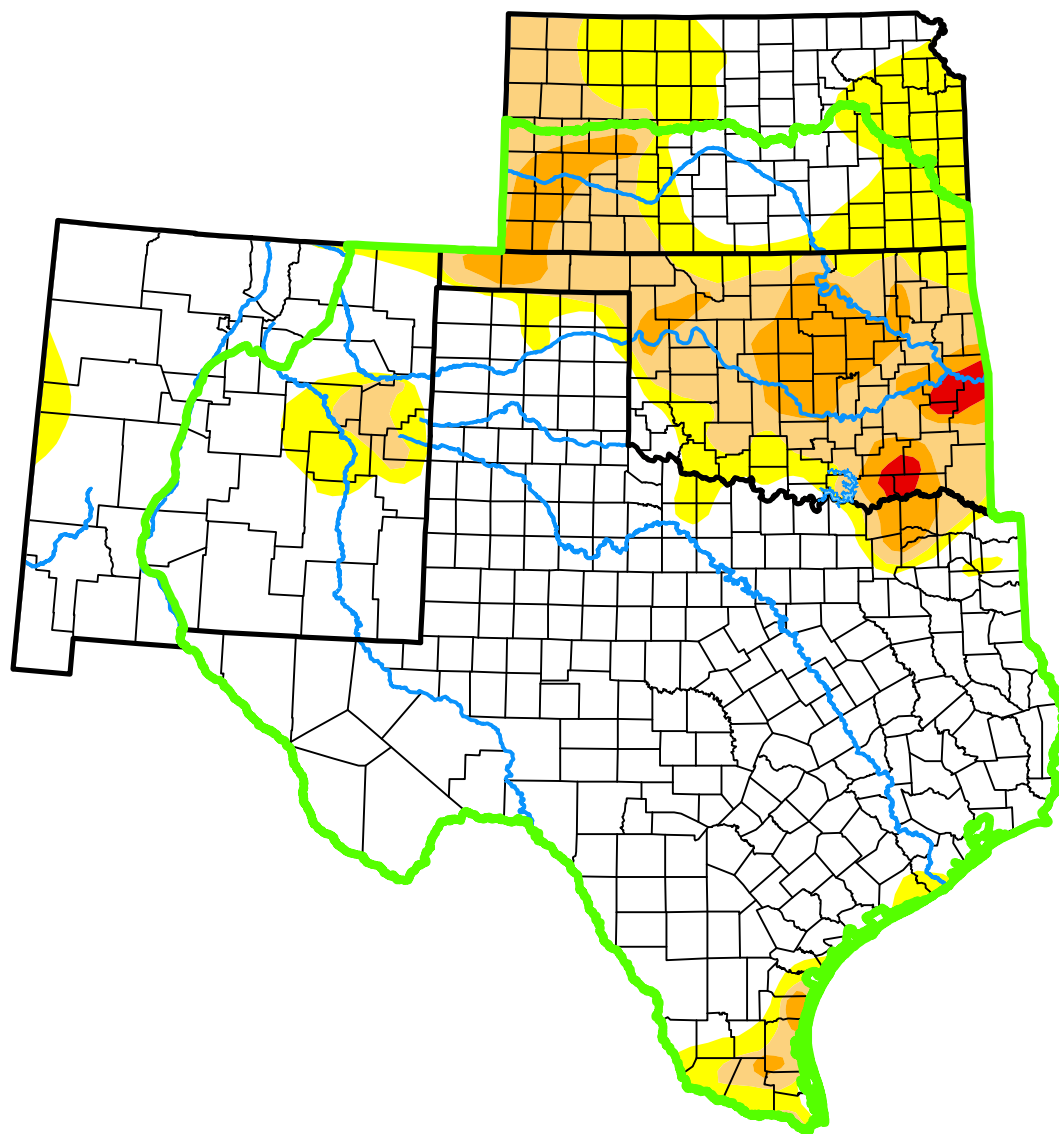


U.S. Drought Monitor

Southern Plains DEWS and Surrounding Areas

January 24, 2017
(Released Thursday, Jan. 26, 2017)
Valid 7 a.m. EST



Intensity:



The Drought Monitor focuses on broad-scale conditions. Local conditions may vary. For more information on the Drought Monitor, go to <https://droughtmonitor.unl.edu/About.aspx>

Author:

Richard Tinker
CPC/NOAA/NWS/NCEP



droughtmonitor.unl.edu