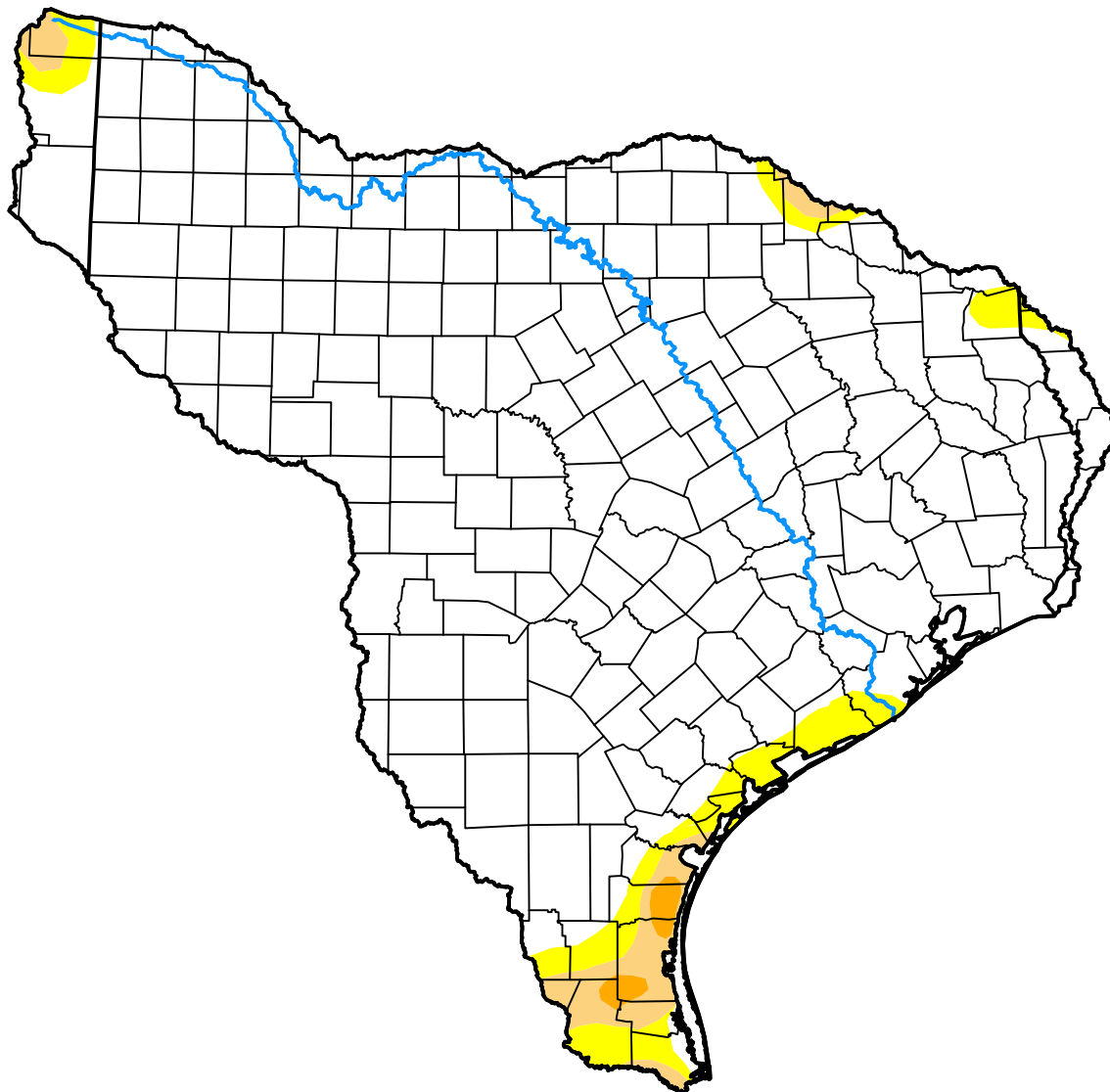


# U.S. Drought Monitor

## Texas-Gulf Watershed

January 31, 2017  
 (Released Thursday, Feb. 2, 2017)

Valid 7 a.m. EST



Drought Conditions (Percent Area)

	None	D0-D4	D1-D4	D2-D4	D3-D4	D4
<b>Current</b>	92.68	7.32	2.85	0.46	0.00	0.00
<b>Last Week</b> <i>01-26-2017</i>	93.97	6.03	2.52	0.46	0.00	0.00
<b>3 Months Ago</b> <i>11-03-2016</i>	52.70	47.30	17.89	6.16	0.00	0.00
<b>Start of Calendar Year</b> <i>01-05-2017</i>	85.11	14.89	2.52	0.02	0.00	0.00
<b>Start of Water Year</b> <i>09-29-2016</i>	95.78	4.22	1.14	0.00	0.00	0.00
<b>One Year Ago</b> <i>02-04-2016</i>	99.39	0.61	0.00	0.00	0.00	0.00

**Intensity:**



The Drought Monitor focuses on broad-scale conditions. Local conditions may vary. For more information on the Drought Monitor, go to <https://droughtmonitor.unl.edu/About.aspx>

**Author:**

David Simeral  
 Western Regional Climate Center

