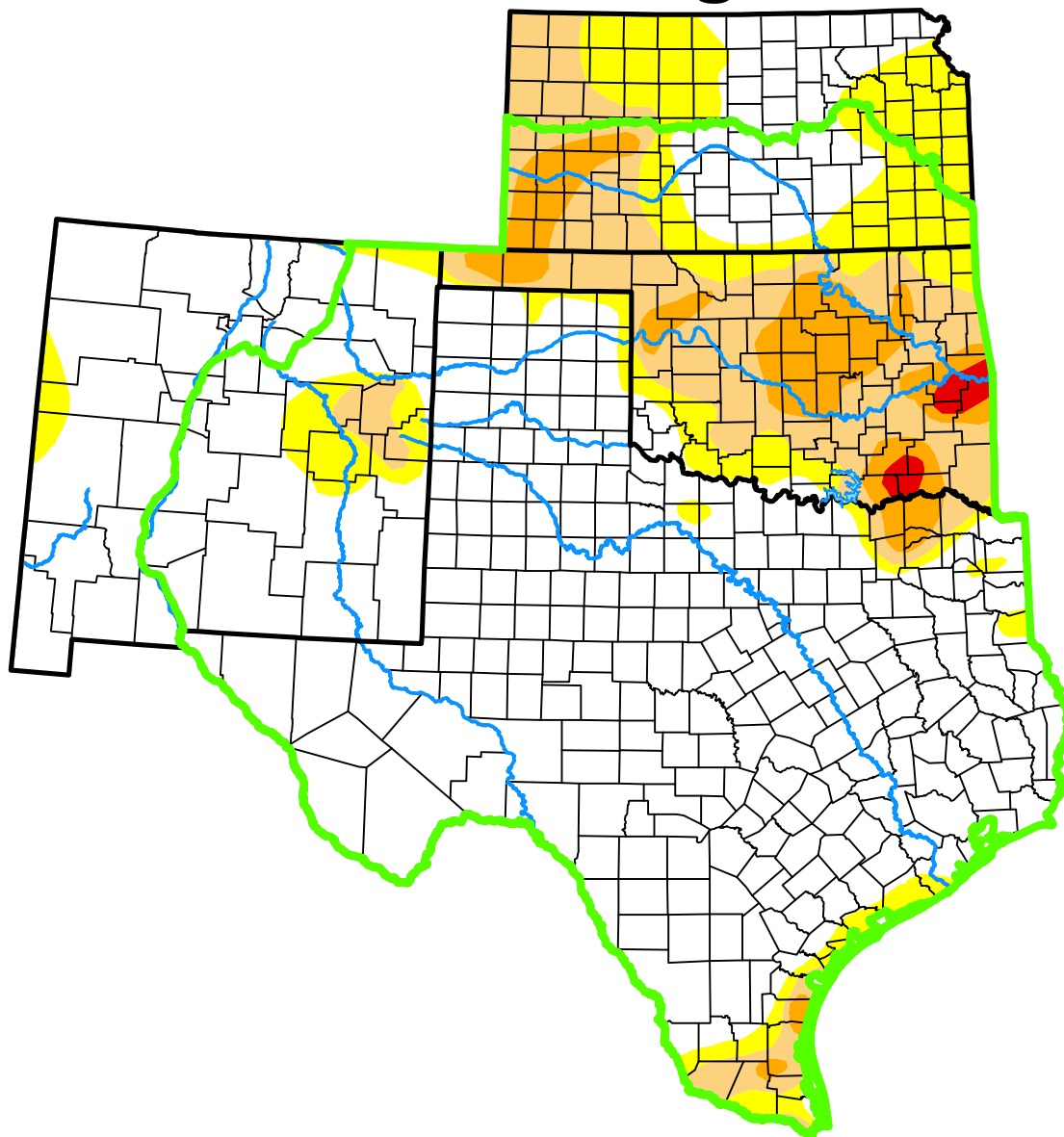


# U.S. Drought Monitor

## Southern Plains DEWS

### and Surrounding Areas



**January 31, 2017**

(Released Thursday, Feb. 2, 2017)

Valid 7 a.m. EST

*Drought Conditions (Percent Area)*

	None	D0	D1	D2	D3	D4
<b>Current</b>	71.25	10.26	11.67	6.19	0.62	0.00
<b>Last Week</b> 01-24-2017	71.20	10.37	11.61	6.19	0.62	0.00
<b>3 Months Ago</b> 11-01-2016	54.79	28.93	11.12	5.17	0.00	0.00
<b>Start of Calendar Year</b> 01-03-2017	58.87	19.45	9.10	11.67	0.91	0.00
<b>Start of Water Year</b> 09-27-2016	85.87	10.28	3.37	0.48	0.00	0.00
<b>One Year Ago</b> 02-02-2016	98.05	1.95	0.00	0.00	0.00	0.00

(Statistics for area highlighted in green)

#### Intensity:

None	D2 Severe Drought
D0 Abnormally Dry	D3 Extreme Drought
D1 Moderate Drought	D4 Exceptional Drought

The Drought Monitor focuses on broad-scale conditions. Local conditions may vary. For more information on the Drought Monitor, go to <https://droughtmonitor.unl.edu/About.aspx>

#### Author:

David Simeral  
Western Regional Climate Center



[droughtmonitor.unl.edu](https://droughtmonitor.unl.edu)