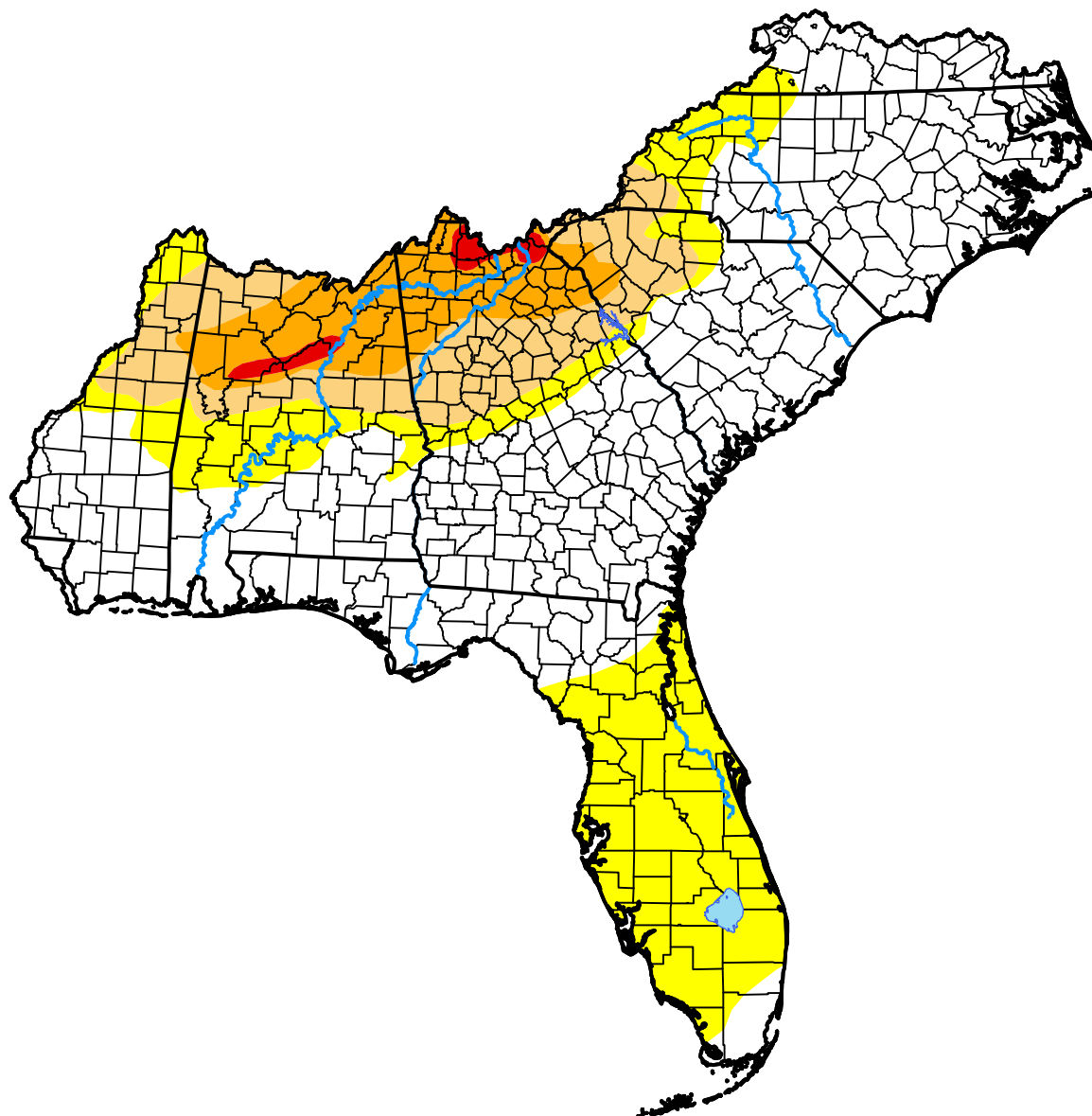


South Atlantic-Gulf Watershed

February 7, 2017

(Released Thursday, Feb. 9, 2017)

Valid 7 a.m. EST



Intensity:



The Drought Monitor focuses on broad-scale conditions. Local conditions may vary. For more information on the Drought Monitor, go to <https://droughtmonitor.unl.edu/About.aspx>

Author:

David Simeral
Western Regional Climate Center



droughtmonitor.unl.edu