

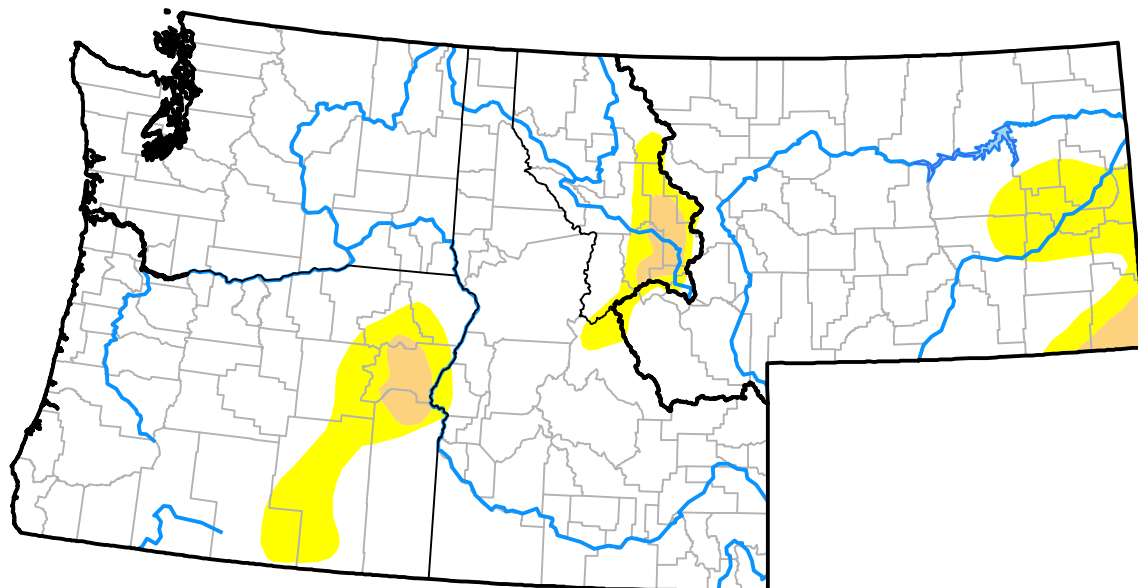
U.S. Drought Monitor

Pacific Northwest RDEWS

February 7, 2017
 (Released Thursday, Feb. 9, 2017)
 Valid 7 a.m. EST

Drought Conditions (Percent Area)

	None	D0-D4	D1-D4	D2-D4	D3-D4	D4
Current	90.98	9.02	1.94	0.00	0.00	0.00
Last Week <i>02-02-2017</i>	90.72	9.28	1.94	0.00	0.00	0.00
3 Months Ago <i>11-10-2016</i>	76.97	23.03	9.90	0.93	0.00	0.00
Start of Calendar Year <i>01-05-2017</i>	81.28	18.72	3.23	0.00	0.00	0.00
Start of Water Year <i>09-29-2016</i>	3.39	96.61	28.73	5.43	0.00	0.00
One Year Ago <i>02-11-2016</i>	26.32	73.68	53.65	19.77	1.91	0.00



Intensity:

- None
- D0 Abnormally Dry
- D1 Moderate Drought
- D2 Severe Drought
- D3 Extreme Drought
- D4 Exceptional Drought

The Drought Monitor focuses on broad-scale conditions. Local conditions may vary. For more information on the Drought Monitor, go to <https://droughtmonitor.unl.edu/About.aspx>

Author:

David Simeral
 Western Regional Climate Center

