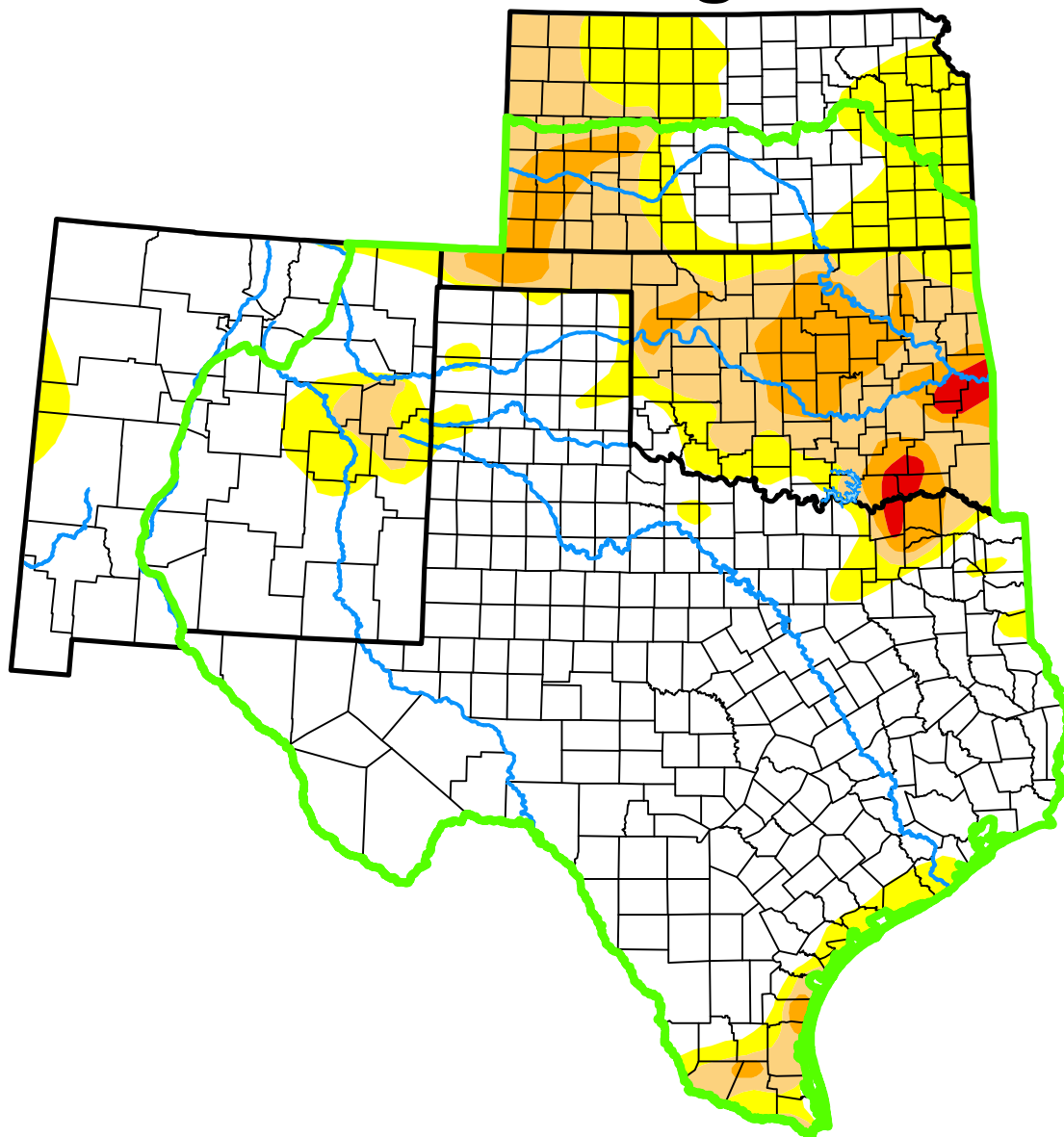


# U.S. Drought Monitor

## Southern Plains DEWS

### and Surrounding Areas



**February 7, 2017**

(Released Thursday, Feb. 9, 2017)

Valid 7 a.m. EST

*Drought Conditions (Percent Area)*

	None	D0	D1	D2	D3	D4
<b>Current</b>	70.13	11.38	11.57	6.17	0.75	0.00
<b>Last Week</b> <i>01-31-2017</i>	71.25	10.26	11.67	6.19	0.62	0.00
<b>3 Months Ago</b> <i>11-08-2016</i>	58.37	24.36	12.38	4.90	0.00	0.00
<b>Start of Calendar Year</b> <i>01-03-2017</i>	58.87	19.45	9.10	11.67	0.91	0.00
<b>Start of Water Year</b> <i>09-27-2016</i>	85.87	10.28	3.37	0.48	0.00	0.00
<b>One Year Ago</b> <i>02-09-2016</i>	92.23	7.77	0.00	0.00	0.00	0.00

(Statistics for area highlighted in green)

#### Intensity:

None	D2 Severe Drought
D0 Abnormally Dry	D3 Extreme Drought
D1 Moderate Drought	D4 Exceptional Drought

The Drought Monitor focuses on broad-scale conditions. Local conditions may vary. For more information on the Drought Monitor, go to <https://droughtmonitor.unl.edu/About.aspx>

#### Author:

David Simeral  
Western Regional Climate Center



[droughtmonitor.unl.edu](https://droughtmonitor.unl.edu)