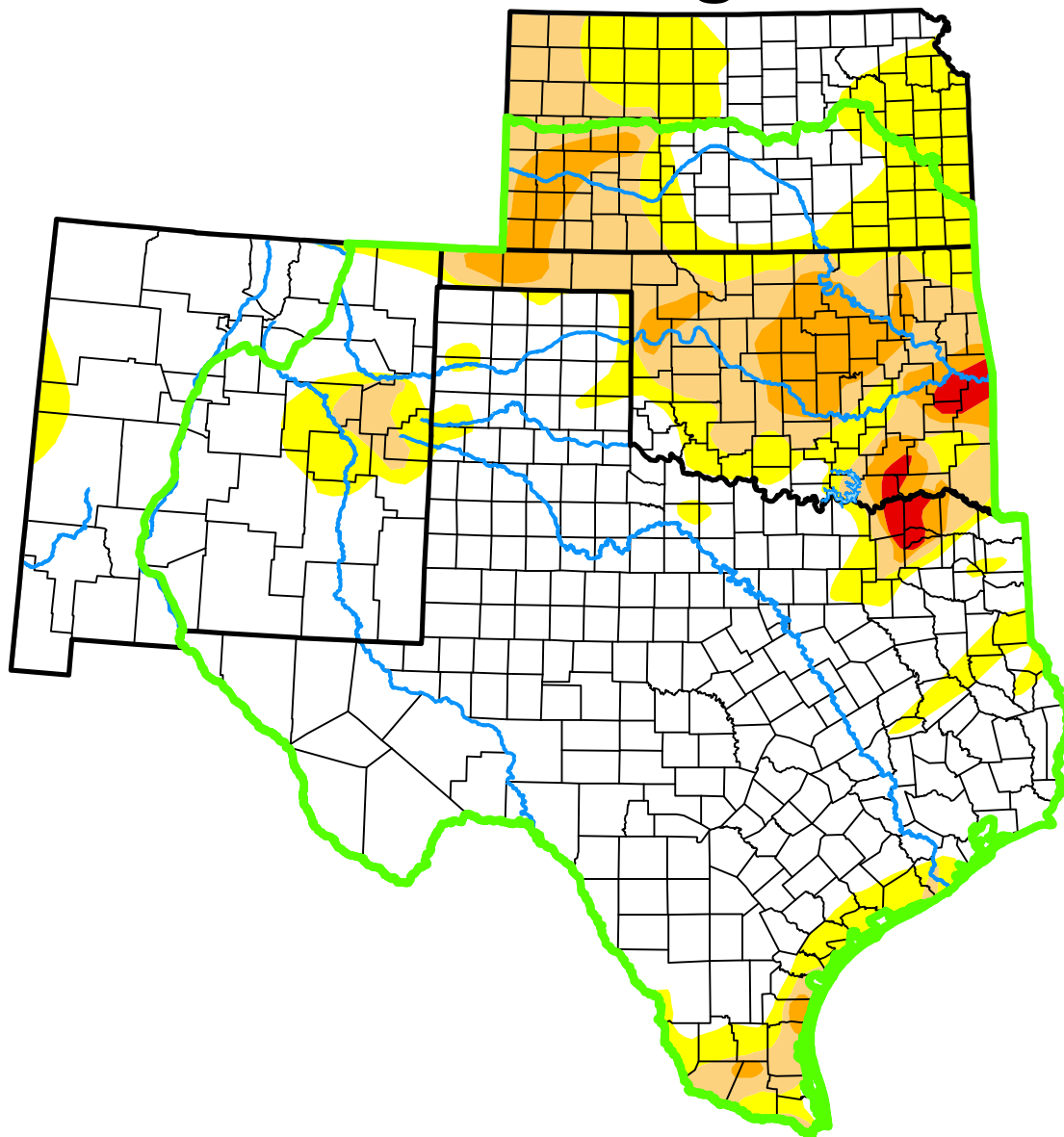


U.S. Drought Monitor

Southern Plains DEWS

and Surrounding Areas



February 14, 2017

(Released Thursday, Feb. 16, 2017)

Valid 7 a.m. EST

Drought Conditions (Percent Area)

	None	D0-D4	D1-D4	D2-D4	D3-D4	D4
Current	68.79	31.21	17.79	6.80	0.85	0.00
Last Week 02-07-2017	70.13	29.87	18.49	6.92	0.75	0.00
3 Months Ago 11-15-2016	58.20	41.80	20.74	6.95	0.48	0.00
Start of Calendar Year 01-03-2017	58.87	41.13	21.68	12.58	0.91	0.00
Start of Water Year 09-27-2016	85.87	14.13	3.85	0.48	0.00	0.00
One Year Ago 02-16-2016	71.97	28.03	2.15	0.00	0.00	0.00

(Statistics for area highlighted in green)

Intensity:

None	D2 Severe Drought
D0 Abnormally Dry	D3 Extreme Drought
D1 Moderate Drought	D4 Exceptional Drought

The Drought Monitor focuses on broad-scale conditions. Local conditions may vary. For more information on the Drought Monitor, go to <https://droughtmonitor.unl.edu/About.aspx>

Author:

Jessica Blunden
NCEI/NOAA



droughtmonitor.unl.edu