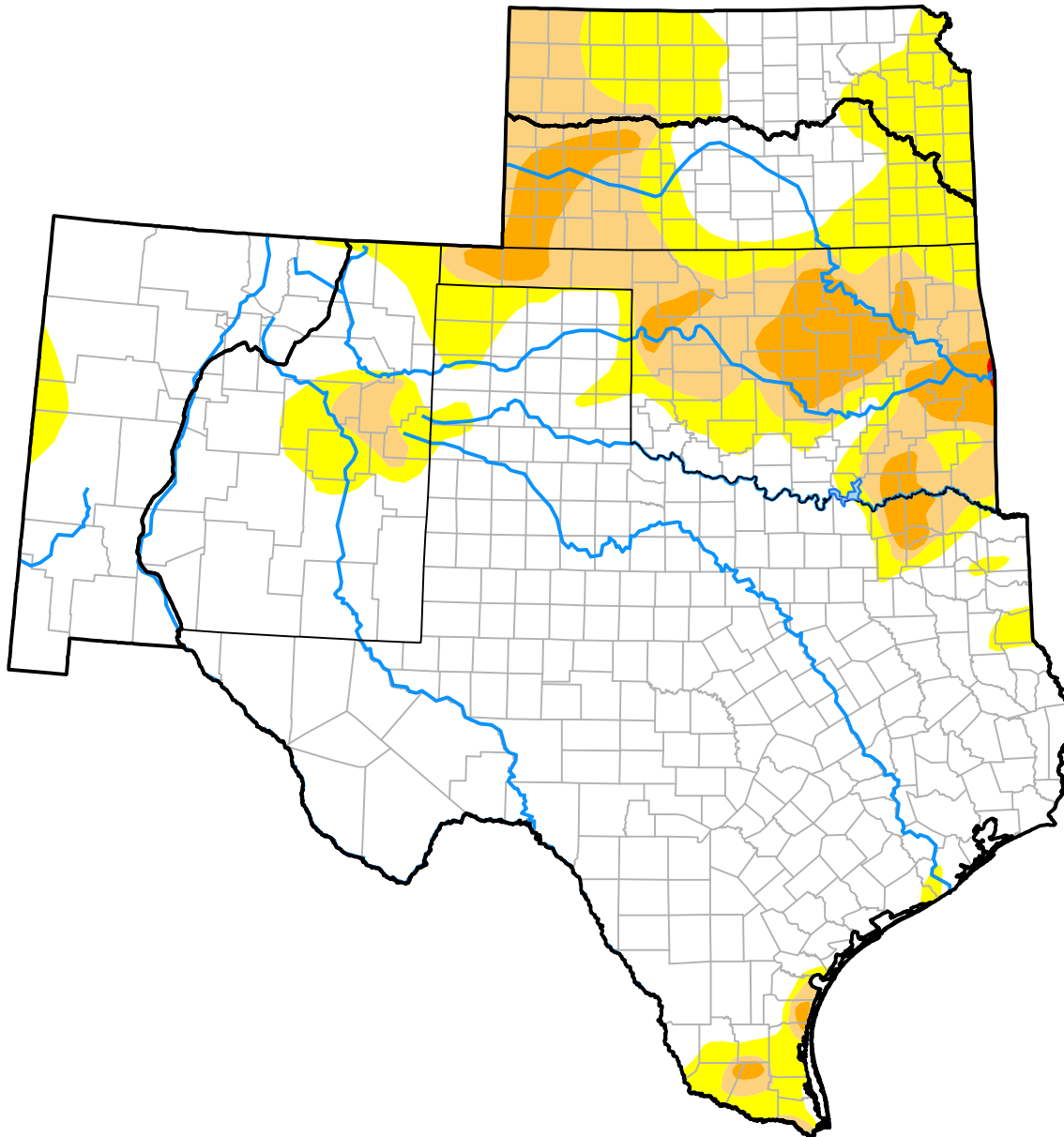


U.S. Drought Monitor

Southern Plains RDEWS

February 21, 2017
 (Released Thursday, Feb. 23, 2017)
 Valid 7 a.m. EST



Drought Conditions (Percent Area)

	None	D0-D4	D1-D4	D2-D4	D3-D4	D4
Current	78.02	21.98	12.27	4.55	0.03	0.00
Last Week <i>02-16-2017</i>	75.37	24.63	14.11	5.35	0.82	0.00
3 Months Ago <i>11-23-2016</i>	53.78	46.22	17.15	7.43	1.17	0.00
Start of Calendar Year <i>01-05-2017</i>	65.81	34.19	17.53	9.68	0.87	0.00
Start of Water Year <i>09-29-2016</i>	78.11	21.89	4.30	0.47	0.00	0.00
One Year Ago <i>02-25-2016</i>	80.05	19.95	0.46	0.00	0.00	0.00

Intensity:

- None
- D0 Abnormally Dry
- D1 Moderate Drought
- D2 Severe Drought
- D3 Extreme Drought
- D4 Exceptional Drought

The Drought Monitor focuses on broad-scale conditions. Local conditions may vary. For more information on the Drought Monitor, go to <https://droughtmonitor.unl.edu/About.aspx>

Author:

Richard Heim
 NCEI/NOAA

