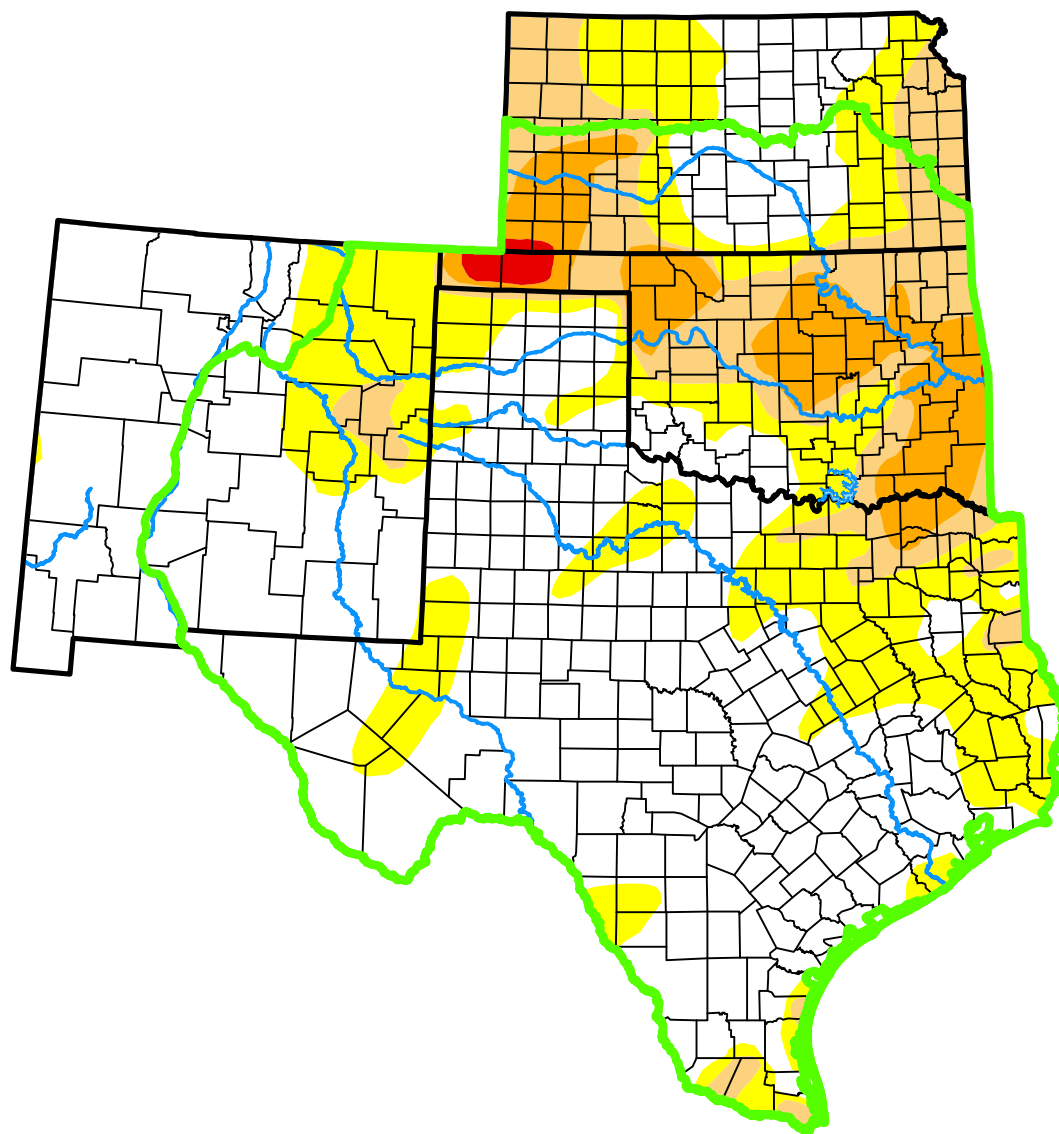


U.S. Drought Monitor

Southern Plains DEWS and Surrounding Areas

March 7, 2017
(Released Thursday, Mar. 9, 2017)
Valid 7 a.m. EST



Intensity:



The Drought Monitor focuses on broad-scale conditions. Local conditions may vary. For more information on the Drought Monitor, go to <https://droughtmonitor.unl.edu/About.aspx>

Author:

Brian Fuchs
National Drought Mitigation Center



droughtmonitor.unl.edu