

# U.S. Drought Monitor

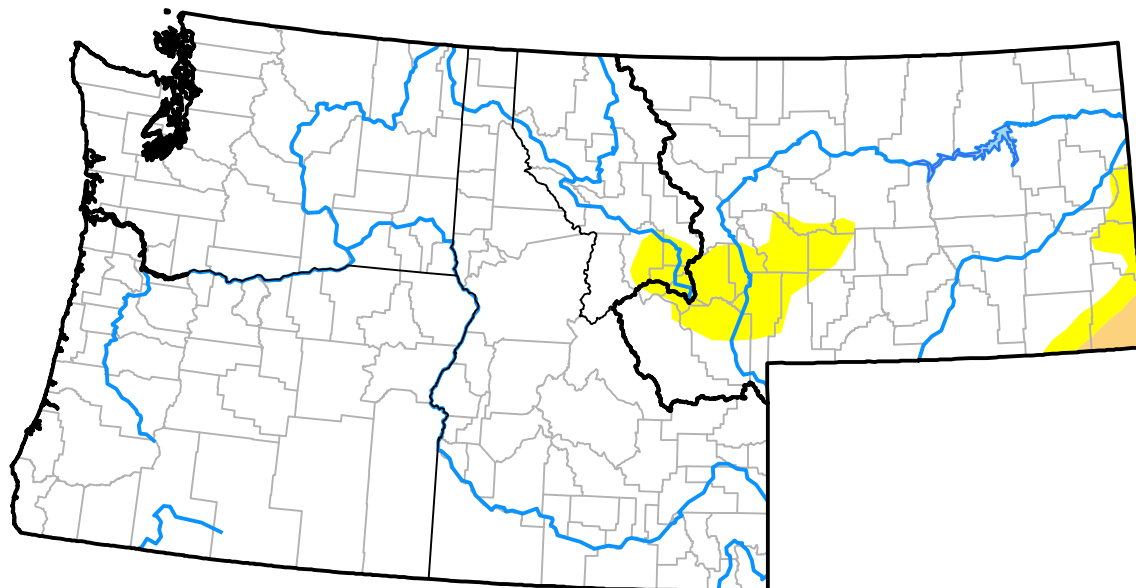
## Pacific Northwest RDEWS

**March 21, 2017**  
 (Released Thursday, Mar. 23, 2017)

Valid 8 a.m. EDT

*Drought Conditions (Percent Area)*

	None	D0-D4	D1-D4	D2-D4	D3-D4	D4
<b>Current</b>	99.10	0.90	0.00	0.00	0.00	0.00
<b>Last Week</b> <i>03-16-2017</i>	99.10	0.90	0.00	0.00	0.00	0.00
<b>3 Months Ago</b> <i>12-22-2016</i>	76.53	23.47	9.90	0.93	0.00	0.00
<b>Start of Calendar Year</b> <i>01-05-2017</i>	81.28	18.72	3.23	0.00	0.00	0.00
<b>Start of Water Year</b> <i>09-29-2016</i>	3.39	96.61	28.73	5.43	0.00	0.00
<b>One Year Ago</b> <i>03-24-2016</i>	60.77	39.23	20.88	3.05	0.00	0.00



***Intensity:***



*The Drought Monitor focuses on broad-scale conditions. Local conditions may vary. For more information on the Drought Monitor, go to <https://droughtmonitor.unl.edu/About.aspx>*

***Author:***

Eric Luebehusen  
 U.S. Department of Agriculture



**droughtmonitor.unl.edu**