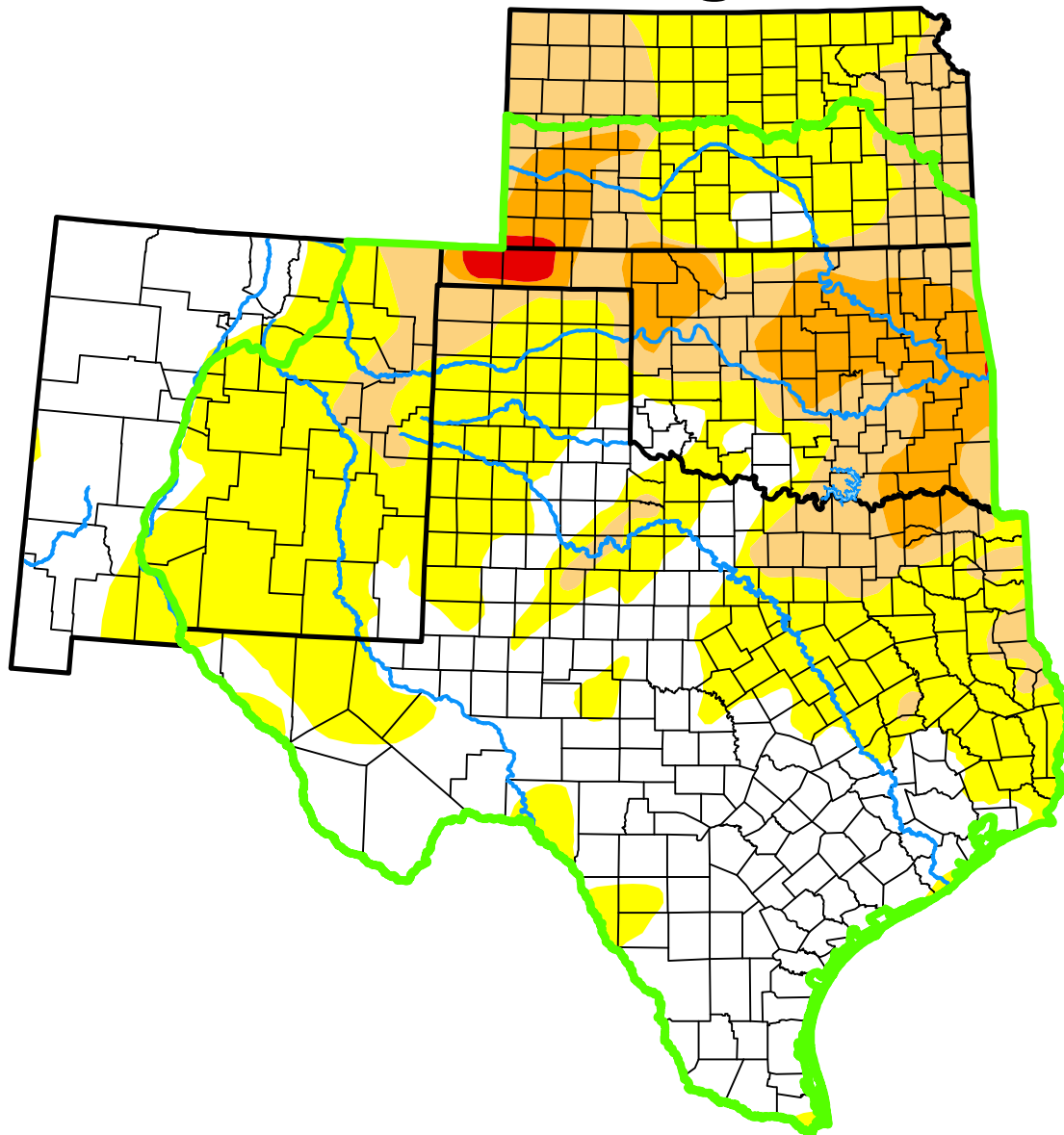


U.S. Drought Monitor

Southern Plains DEWS

and Surrounding Areas



March 21, 2017

(Released Thursday, Mar. 23, 2017)

Valid 8 a.m. EDT

Drought Conditions (Percent Area)

	None	D0-D4	D1-D4	D2-D4	D3-D4	D4
Current	34.87	65.13	24.39	9.56	0.61	0.00
Last Week <i>03-14-2017</i>	52.26	47.74	19.65	8.78	0.61	0.00
3 Months Ago <i>12-20-2016</i>	61.00	39.00	20.85	10.45	0.52	0.00
Start of Calendar Year <i>01-03-2017</i>	58.87	41.13	21.68	12.58	0.91	0.00
Start of Water Year <i>09-27-2016</i>	85.87	14.13	3.85	0.48	0.00	0.00
One Year Ago <i>03-22-2016</i>	63.50	36.50	4.05	0.00	0.00	0.00

(Statistics for area highlighted in green)

Intensity:

None	D2 Severe Drought
D0 Abnormally Dry	D3 Extreme Drought
D1 Moderate Drought	D4 Exceptional Drought

The Drought Monitor focuses on broad-scale conditions. Local conditions may vary. For more information on the Drought Monitor, go to <https://droughtmonitor.unl.edu/About.aspx>

Author:

Eric Luebehusen
U.S. Department of Agriculture



droughtmonitor.unl.edu