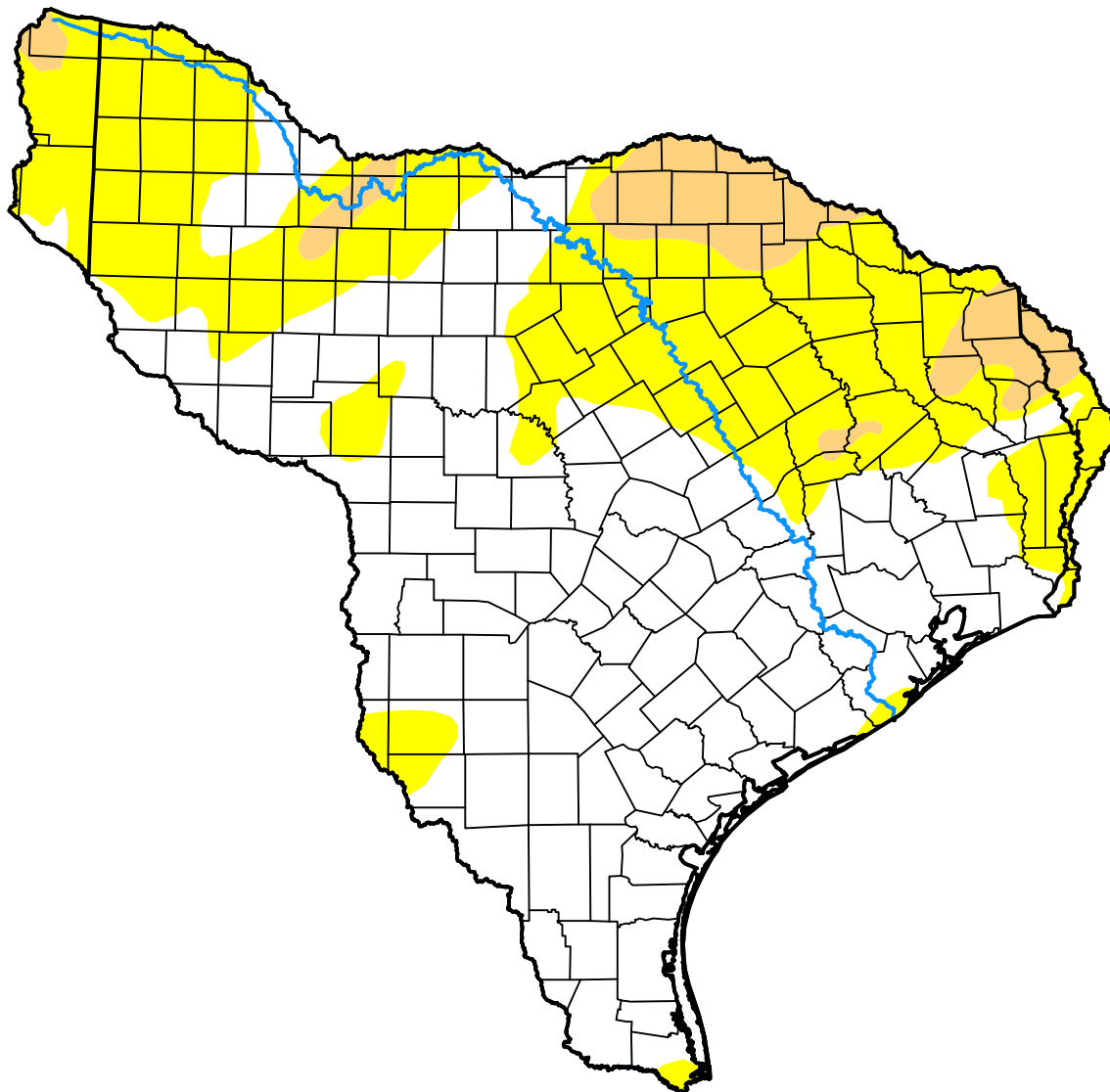


U.S. Drought Monitor

Texas-Gulf Watershed

March 28, 2017
 (Released Thursday, Mar. 30, 2017)

Valid 8 a.m. EDT



Drought Conditions (Percent Area)

	None	D0-D4	D1-D4	D2-D4	D3-D4	D4
Current	57.58	42.42	7.03	0.00	0.00	0.00
Last Week <i>03-23-2017</i>	55.10	44.90	6.87	0.00	0.00	0.00
3 Months Ago <i>12-29-2016</i>	76.46	23.54	3.85	0.00	0.00	0.00
Start of Calendar Year <i>01-05-2017</i>	85.11	14.89	2.52	0.02	0.00	0.00
Start of Water Year <i>09-29-2016</i>	95.78	4.22	1.14	0.00	0.00	0.00
One Year Ago <i>03-31-2016</i>	84.16	15.84	0.83	0.00	0.00	0.00

Intensity:

- None
- D0 Abnormally Dry
- D1 Moderate Drought
- D2 Severe Drought
- D3 Extreme Drought
- D4 Exceptional Drought

The Drought Monitor focuses on broad-scale conditions. Local conditions may vary. For more information on the Drought Monitor, go to <https://droughtmonitor.unl.edu/About.aspx>

Author:

Eric Luebehusen
 U.S. Department of Agriculture



droughtmonitor.unl.edu