

U.S. Drought Monitor

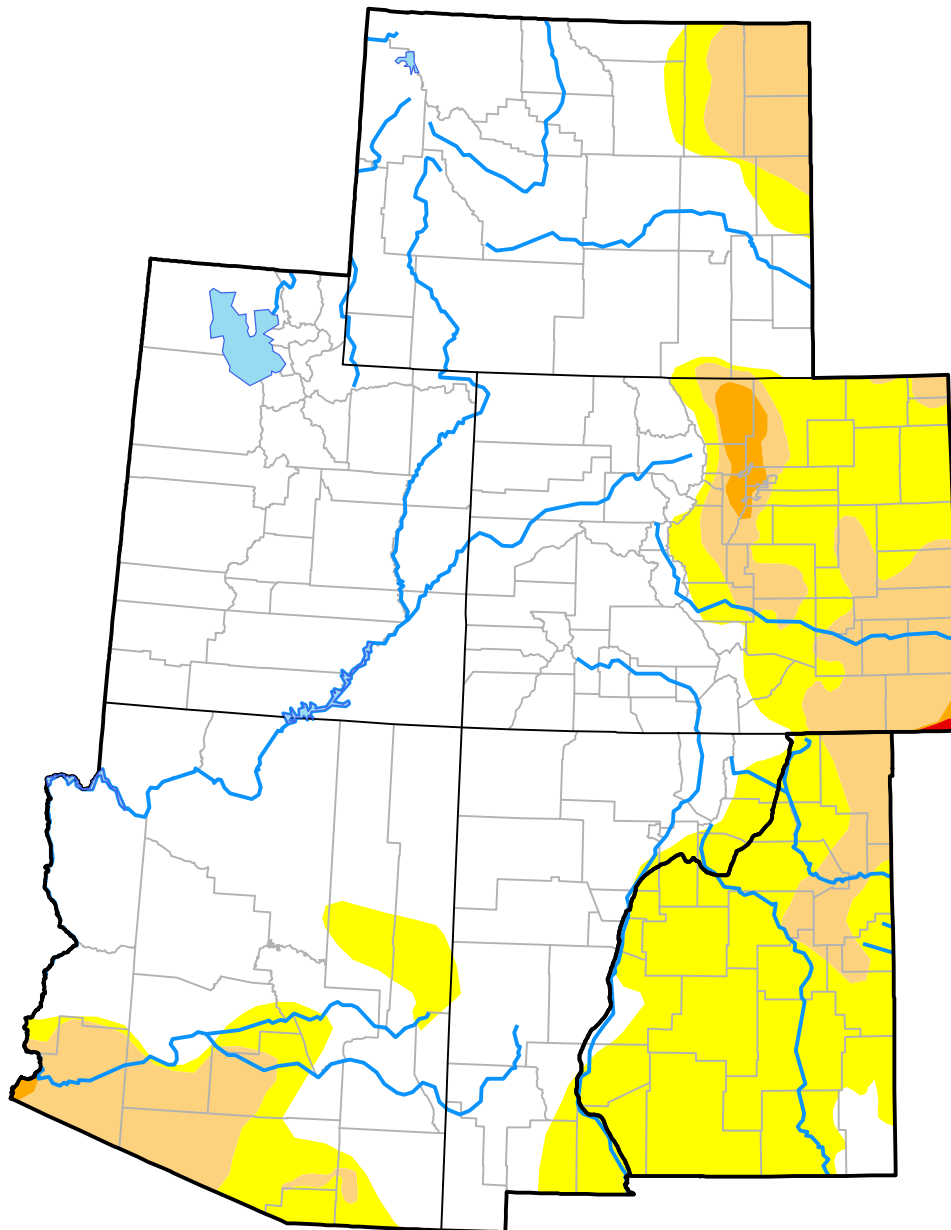
Intermountain West RDEWS

March 28, 2017
(Released Thursday, Mar. 30, 2017)

Valid 8 a.m. EDT

Drought Conditions (Percent Area)

	None	D0-D4	D1-D4	D2-D4	D3-D4	D4
Current	68.18	31.82	10.91	0.69	0.04	0.00
Last Week <i>03-23-2017</i>	67.74	32.26	14.61	1.07	0.04	0.00
3 Months Ago <i>12-29-2016</i>	45.80	54.20	20.69	1.67	0.00	0.00
Start of Calendar Year <i>01-05-2017</i>	49.44	50.56	18.89	1.51	0.00	0.00
Start of Water Year <i>09-29-2016</i>	42.41	57.59	18.03	3.17	0.00	0.00
One Year Ago <i>03-31-2016</i>	24.78	75.22	25.32	2.74	0.00	0.00



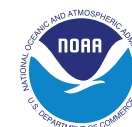
Intensity:



The Drought Monitor focuses on broad-scale conditions. Local conditions may vary. For more information on the Drought Monitor, go to <https://droughtmonitor.unl.edu/About.aspx>

Author:

Eric Luebehusen
U.S. Department of Agriculture



droughtmonitor.unl.edu