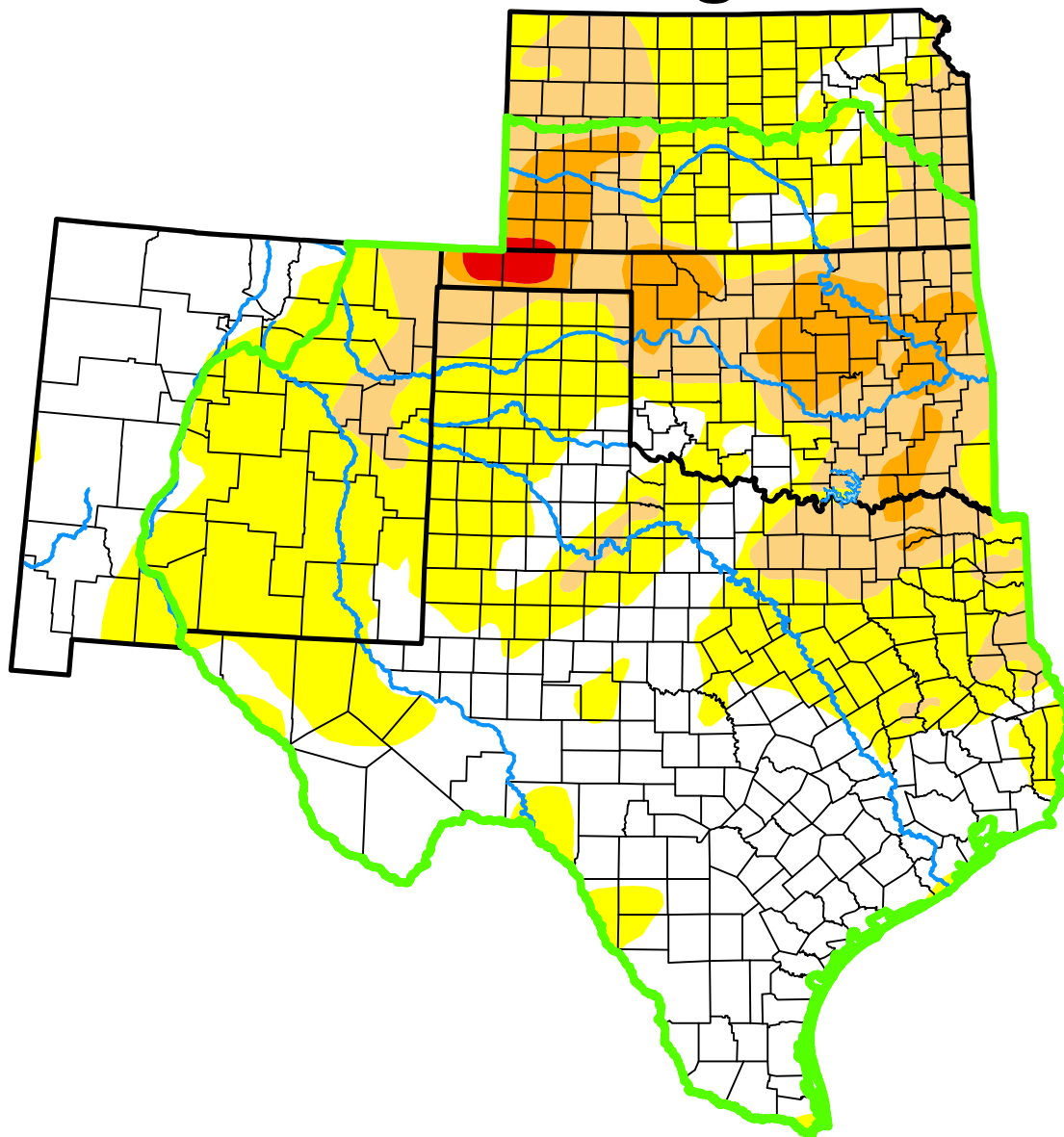


# U.S. Drought Monitor

## Southern Plains DEWS

### and Surrounding Areas



**March 28, 2017**

*(Released Thursday, Mar. 30, 2017)*

Valid 8 a.m. EDT

*Drought Conditions (Percent Area)*

	None	D0	D1	D2	D3	D4
<b>Current</b>	36.19	39.89	16.27	7.07	0.58	0.00
<b>Last Week</b> <i>03-21-2017</i>	34.87	40.75	14.83	8.95	0.61	0.00
<b>3 Months Ago</b> <i>12-27-2016</i>	55.47	24.18	9.48	10.35	0.52	0.00
<b>Start of Calendar Year</b> <i>01-03-2017</i>	58.87	19.45	9.10	11.67	0.91	0.00
<b>Start of Water Year</b> <i>09-27-2016</i>	85.87	10.28	3.37	0.48	0.00	0.00
<b>One Year Ago</b> <i>03-29-2016</i>	52.01	37.84	10.15	0.00	0.00	0.00

(Statistics for area highlighted in green)

#### Intensity:

None	D2 Severe Drought
D0 Abnormally Dry	D3 Extreme Drought
D1 Moderate Drought	D4 Exceptional Drought

*The Drought Monitor focuses on broad-scale conditions. Local conditions may vary. For more information on the Drought Monitor, go to <https://droughtmonitor.unl.edu/About.aspx>*

#### Author:

Eric Luebehusen  
U.S. Department of Agriculture



**droughtmonitor.unl.edu**