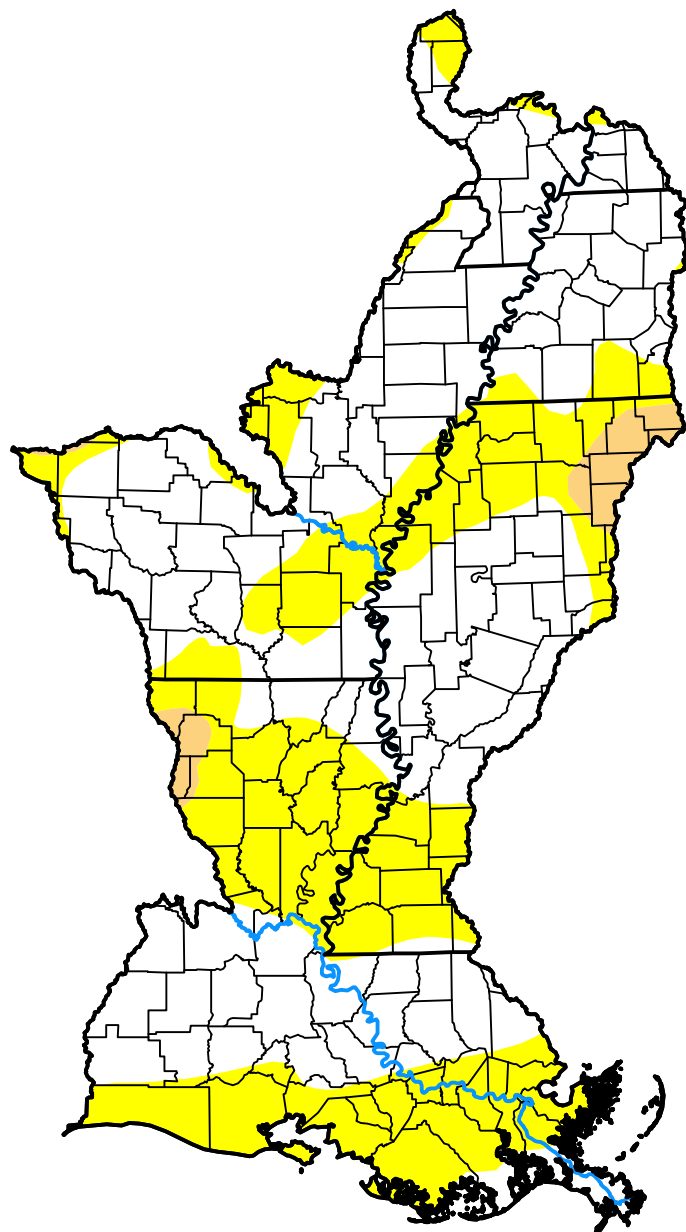


# U.S. Drought Monitor

## Lower Mississippi Watershed

**April 18, 2017**  
 (Released Thursday, Apr. 20, 2017)  
 Valid 8 a.m. EDT



*Drought Conditions (Percent Area)*

	None	D0	D1	D2	D3	D4
<b>Current</b>	60.97	36.52	2.51	0.00	0.00	0.00
<b>Last Week</b> <i>04-13-2017</i>	60.97	36.52	2.51	0.00	0.00	0.00
<b>3 Months Ago</b> <i>01-19-2017</i>	50.96	22.20	26.84	0.00	0.00	0.00
<b>Start of Calendar Year</b> <i>01-05-2017</i>	46.67	26.49	26.84	0.00	0.00	0.00
<b>Start of Water Year</b> <i>09-29-2016</i>	60.48	31.91	5.56	2.05	0.00	0.00
<b>One Year Ago</b> <i>04-21-2016</i>	98.63	1.37	0.00	0.00	0.00	0.00

***Intensity:***



*The Drought Monitor focuses on broad-scale conditions. Local conditions may vary. For more information on the Drought Monitor, go to <https://droughtmonitor.unl.edu/About.aspx>*

***Author:***

Chris Fenimore  
 NCEI/NESDIS/NOAA

