

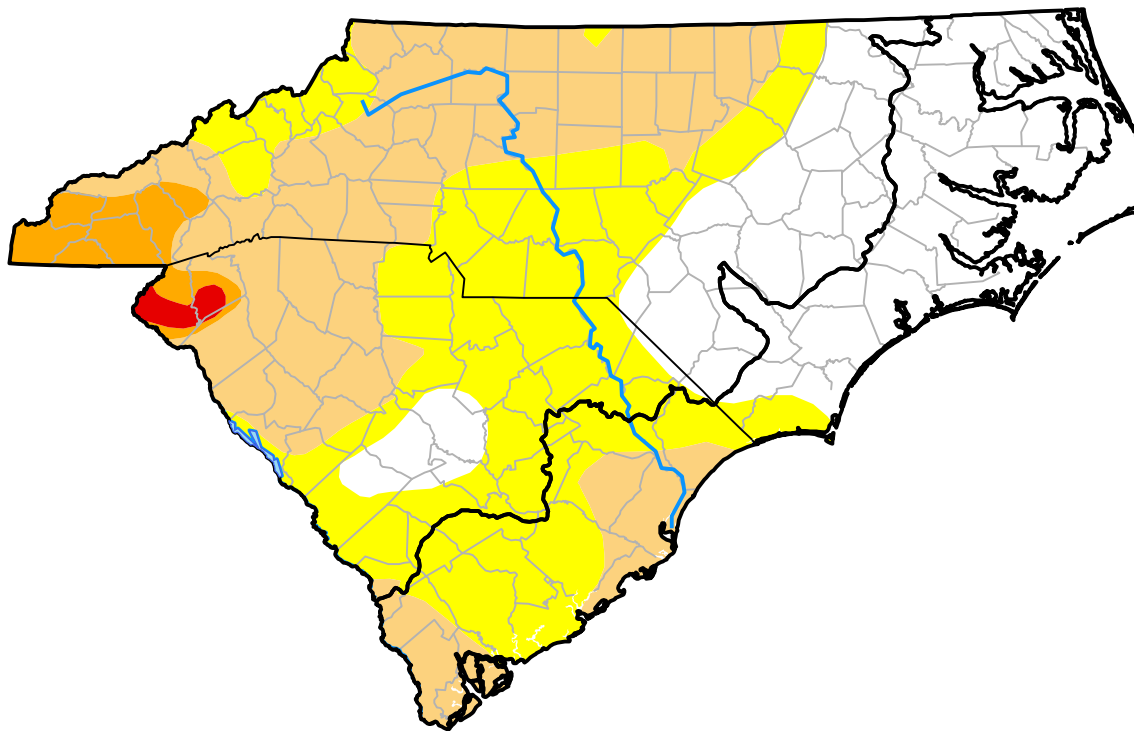
# Carolinas RDEWS and Surrounding Areas

(Released Thursday, Apr. 20, 2017)

10:00 a.m. EDT

Drought Conditions (Percent Area)

	None	D0	D1	D2	D3	D4
<b>Current</b>	29.40	34.34	32.13	3.51	0.63	0.00
<b>Last Week</b> <i>04-13-2017</i>	30.26	33.60	32.01	3.51	0.63	0.00
<b>3 Months Ago</b> <i>01-19-2017</i>	51.34	21.11	12.72	12.27	2.56	0.00
<b>Start of Calendar Year</b> <i>01-05-2017</i>	45.80	26.00	12.93	12.72	2.56	0.00
<b>Start of Water Year</b> <i>09-29-2016</i>	69.04	14.70	15.14	1.13	0.00	0.00
<b>One Year Ago</b> <i>04-21-2016</i>	30.77	69.23	0.00	0.00	0.00	0.00



Intensity:

- None
- D0 Abnormally Dry
- D1 Moderate Drought
- D2 Severe Drought
- D3 Extreme Drought
- D4 Exceptional Drought

The Drought Monitor focuses on broad-scale conditions. Local conditions may vary. For more information on the Drought Monitor, go to <https://droughtmonitor.unl.edu/About.aspx>

Author:

Chris Fenimore  
NCEI/NESDIS/NOAA

