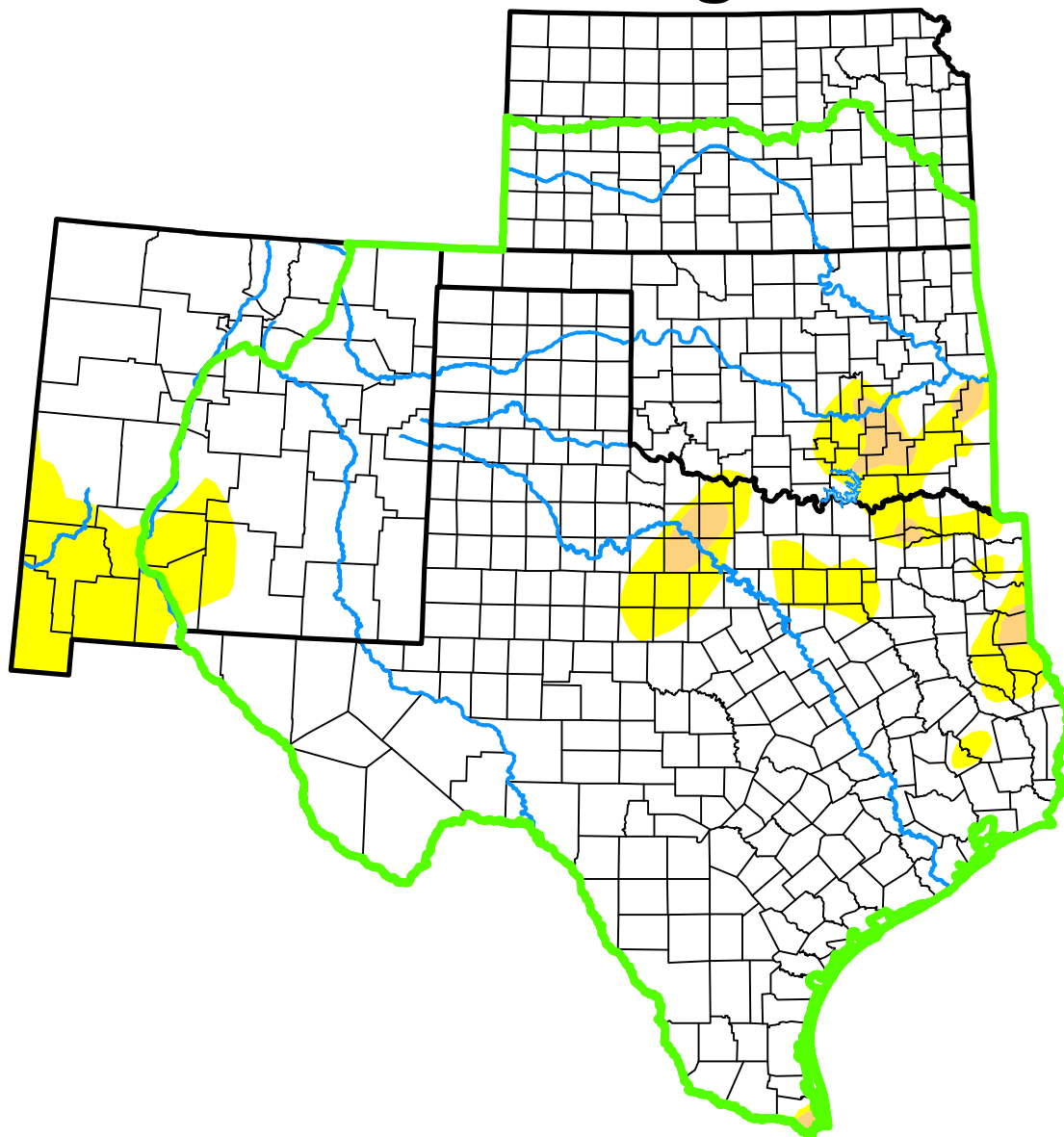


# U.S. Drought Monitor

## Southern Plains DEWS and Surrounding Areas



**May 2, 2017**

(Released Thursday, May. 4, 2017)

Valid 8 a.m. EDT

*Drought Conditions (Percent Area)*

	None	D0-D4	D1-D4	D2-D4	D3-D4	D4
<b>Current</b>	90.93	9.07	1.54	0.00	0.00	0.00
<b>Last Week</b> <i>04-25-2017</i>	82.01	17.99	3.48	0.00	0.00	0.00
<b>3 Months Ago</b> <i>01-31-2017</i>	71.25	28.75	18.49	6.82	0.62	0.00
<b>Start of Calendar Year</b> <i>01-03-2017</i>	58.87	41.13	21.68	12.58	0.91	0.00
<b>Start of Water Year</b> <i>09-27-2016</i>	85.87	14.13	3.85	0.48	0.00	0.00
<b>One Year Ago</b> <i>05-03-2016</i>	77.24	22.76	5.26	0.00	0.00	0.00

(Statistics for area highlighted in green)

### Intensity:

None	D2 Severe Drought
D0 Abnormally Dry	D3 Extreme Drought
D1 Moderate Drought	D4 Exceptional Drought

The Drought Monitor focuses on broad-scale conditions. Local conditions may vary. For more information on the Drought Monitor, go to <https://droughtmonitor.unl.edu/About.aspx>

### Author:

Brian Fuchs  
National Drought Mitigation Center



[droughtmonitor.unl.edu](https://droughtmonitor.unl.edu)