

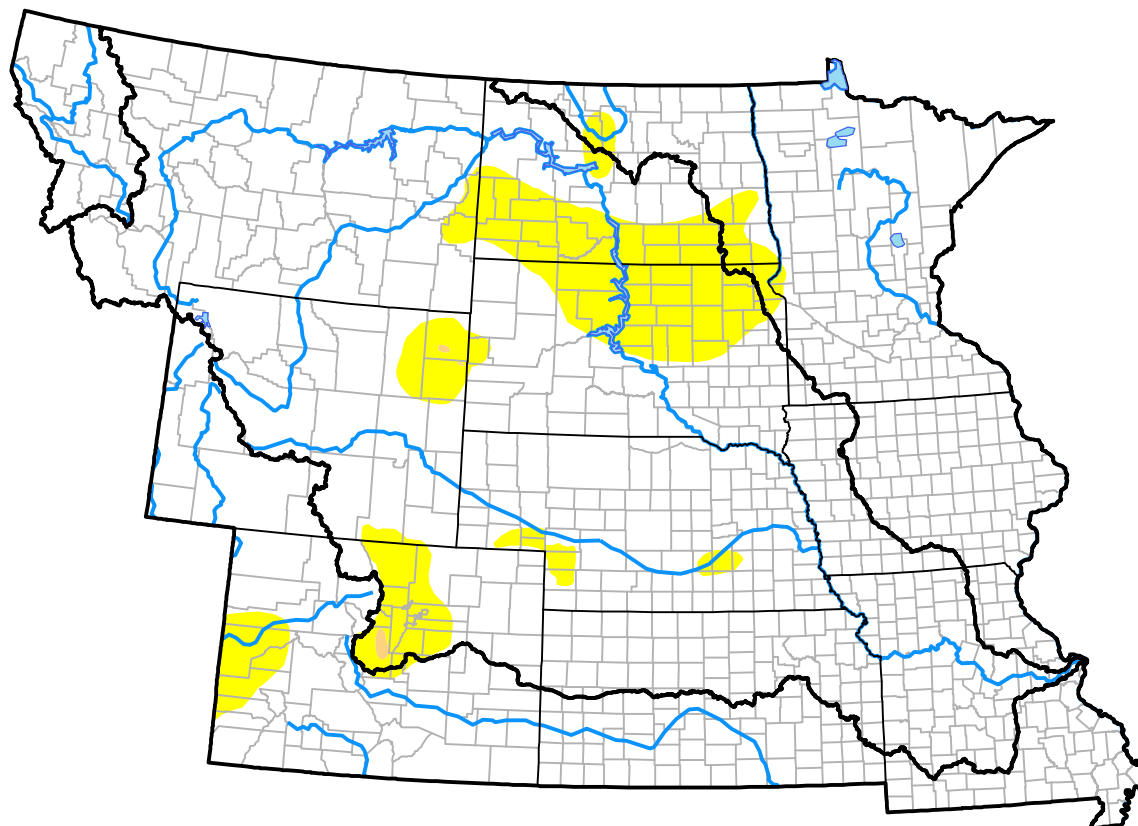
# U.S. Drought Monitor

## Missouri River Basin RDEWS

May 16, 2017

(Released Thursday, May. 18, 2017)

Valid 8 a.m. EDT



Drought Conditions (Percent Area)

	None	D0-D4	D1-D4	D2-D4	D3-D4	D4
<b>Current</b>	86.20	13.80	0.11	0.00	0.00	0.00
<b>Last Week</b> 05-11-2017	86.13	13.87	0.47	0.00	0.00	0.00
<b>3 Months Ago</b> 02-16-2017	63.50	36.50	13.60	0.03	0.00	0.00
<b>Start of Calendar Year</b> 01-05-2017	55.38	44.62	16.00	1.41	0.00	0.00
<b>Start of Water Year</b> 09-29-2016	68.23	31.77	12.23	3.65	0.26	0.00
<b>One Year Ago</b> 05-19-2016	88.50	11.50	2.74	0.20	0.00	0.00

### Intensity:

None	D2 Severe Drought
D0 Abnormally Dry	D3 Extreme Drought
D1 Moderate Drought	D4 Exceptional Drought

The Drought Monitor focuses on broad-scale conditions. Local conditions may vary. For more information on the Drought Monitor, go to <https://droughtmonitor.unl.edu/About.aspx>

### Author:

Brad Rippey  
U.S. Department of Agriculture



[droughtmonitor.unl.edu](https://droughtmonitor.unl.edu)