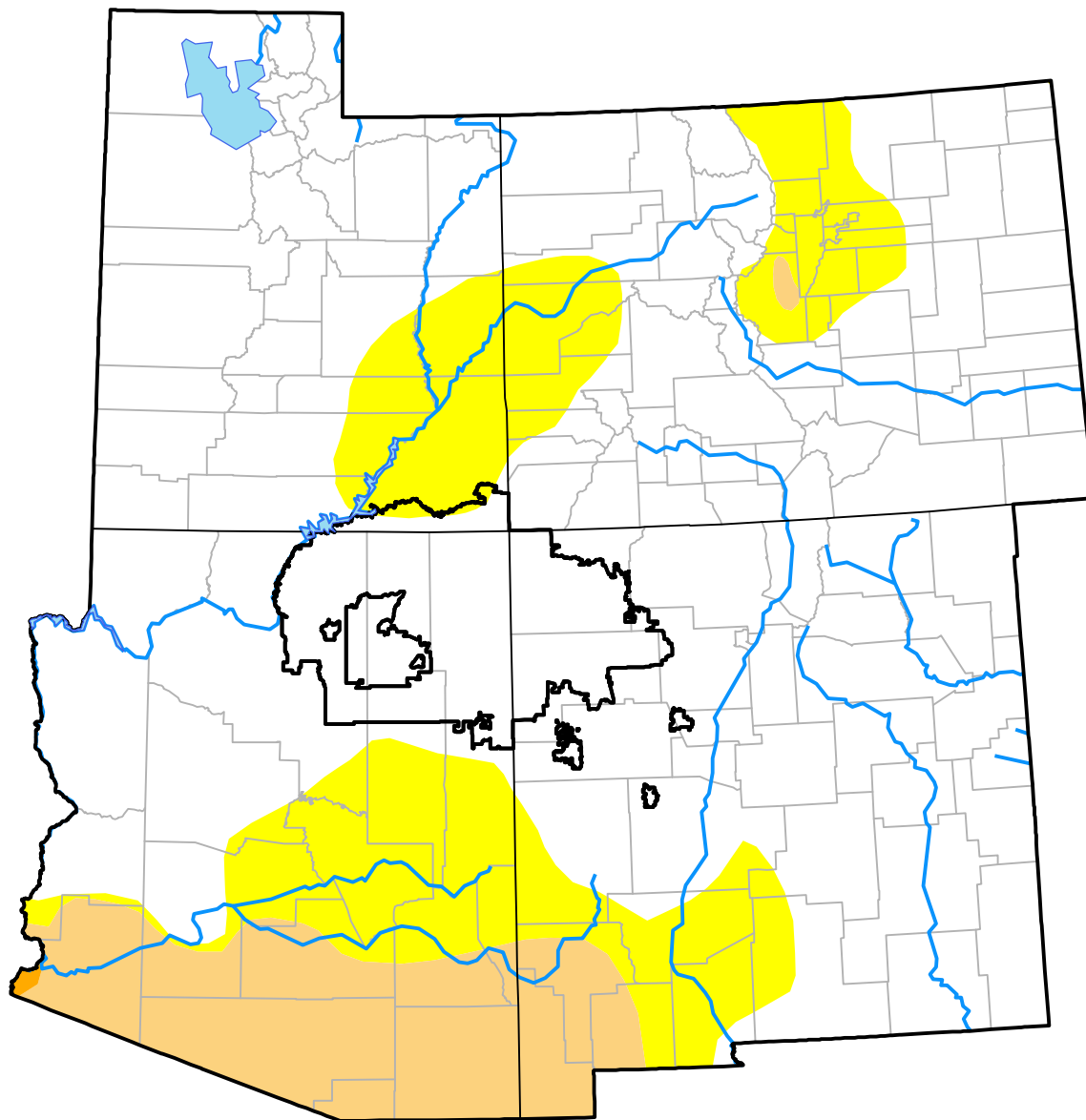


U.S. Drought Monitor

Navajo RDEWS

May 16, 2017
(Released Thursday, May. 18, 2017)
 Valid 8 a.m. EDT



Drought Conditions (Percent Area)

	None	D0-D4	D1-D4	D2-D4	D3-D4	D4
Current	98.06	1.94	0.00	0.00	0.00	0.00
Last Week <i>05-11-2017</i>	98.19	1.81	0.00	0.00	0.00	0.00
3 Months Ago <i>02-16-2017</i>	52.03	47.97	0.00	0.00	0.00	0.00
Start of Calendar Year <i>01-05-2017</i>	41.25	58.75	21.38	0.00	0.00	0.00
Start of Water Year <i>09-29-2016</i>	2.59	97.41	32.28	0.00	0.00	0.00
One Year Ago <i>05-19-2016</i>	0.06	99.94	20.67	0.00	0.00	0.00

Intensity:

None	D2 Severe Drought
D0 Abnormally Dry	D3 Extreme Drought
D1 Moderate Drought	D4 Exceptional Drought

The Drought Monitor focuses on broad-scale conditions. Local conditions may vary. For more information on the Drought Monitor, go to <https://droughtmonitor.unl.edu/About.aspx>

Author:

Brad Rippey
 U.S. Department of Agriculture



droughtmonitor.unl.edu