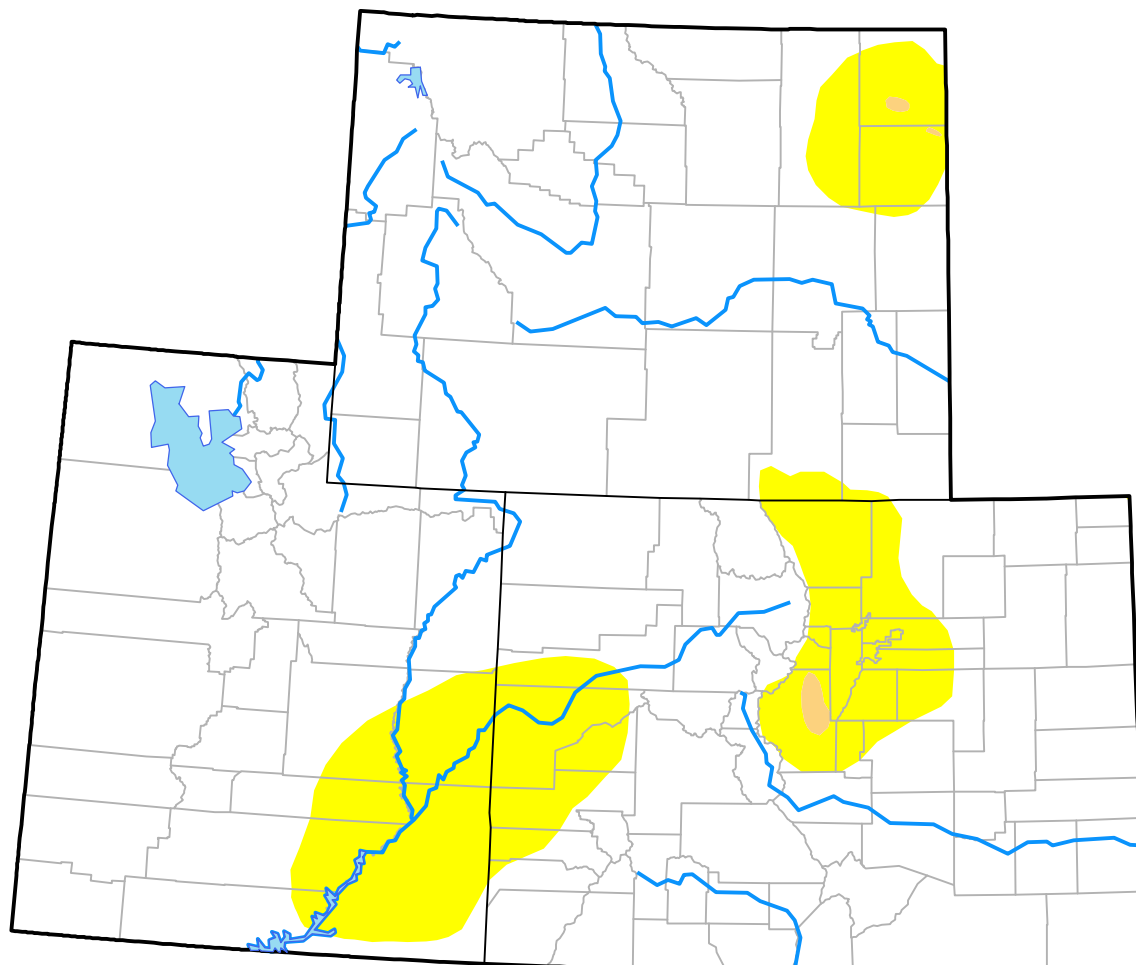


Drought Conditions (Percent Area)

	None	D0	D1	D2	D3	D4
Current	85.47	14.34	0.19	0.00	0.00	0.00
Last Week 05-11-2017	88.73	10.43	0.84	0.00	0.00	0.00
3 Months Ago 02-16-2017	71.74	11.67	16.31	0.27	0.00	0.00
Start of Calendar Year 01-05-2017	46.62	30.64	21.46	1.29	0.00	0.00
Start of Water Year 09-29-2016	52.16	34.42	9.29	4.12	0.00	0.00
One Year Ago 05-19-2016	73.01	25.36	1.27	0.36	0.00	0.00



Intensity:

None	D2 Severe Drought
D0 Abnormally Dry	D3 Extreme Drought
D1 Moderate Drought	D4 Exceptional Drought

The Drought Monitor focuses on broad-scale conditions. Local conditions may vary. For more information on the Drought Monitor, go to <https://droughtmonitor.unl.edu/About.aspx>

Author:

Brad Rippey
U.S. Department of Agriculture

