

U.S. Drought Monitor

Lower Mississippi Watershed

May 23, 2017

(Released Thursday, May. 25, 2017)

Valid 8 a.m. EDT

Drought Conditions (Percent Area)

	None	D0-D4	D1-D4	D2-D4	D3-D4	D4
Current	96.51	3.49	0.60	0.00	0.00	0.00
Last Week 05-18-2017	95.85	4.15	0.60	0.00	0.00	0.00
3 Months Ago 02-23-2017	61.44	38.56	3.84	0.06	0.00	0.00
Start of Calendar Year 01-05-2017	46.67	53.33	26.84	0.00	0.00	0.00
Start of Water Year 09-29-2016	60.48	39.52	7.61	2.05	0.00	0.00
One Year Ago 05-26-2016	74.12	25.88	0.00	0.00	0.00	0.00

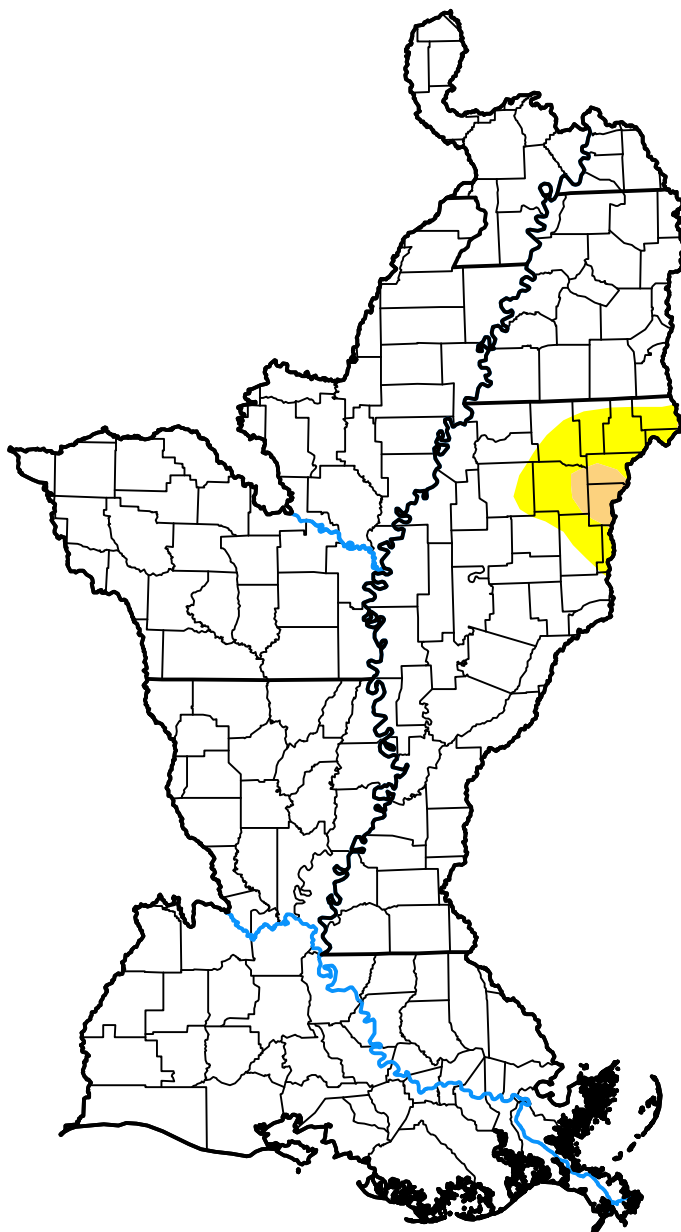
Intensity:

 None	 D2 Severe Drought
 D0 Abnormally Dry	 D3 Extreme Drought
 D1 Moderate Drought	 D4 Exceptional Drought

The Drought Monitor focuses on broad-scale conditions. Local conditions may vary. For more information on the Drought Monitor, go to <https://droughtmonitor.unl.edu/About.aspx>

Author:

Brad Rippey
U.S. Department of Agriculture



droughtmonitor.unl.edu