

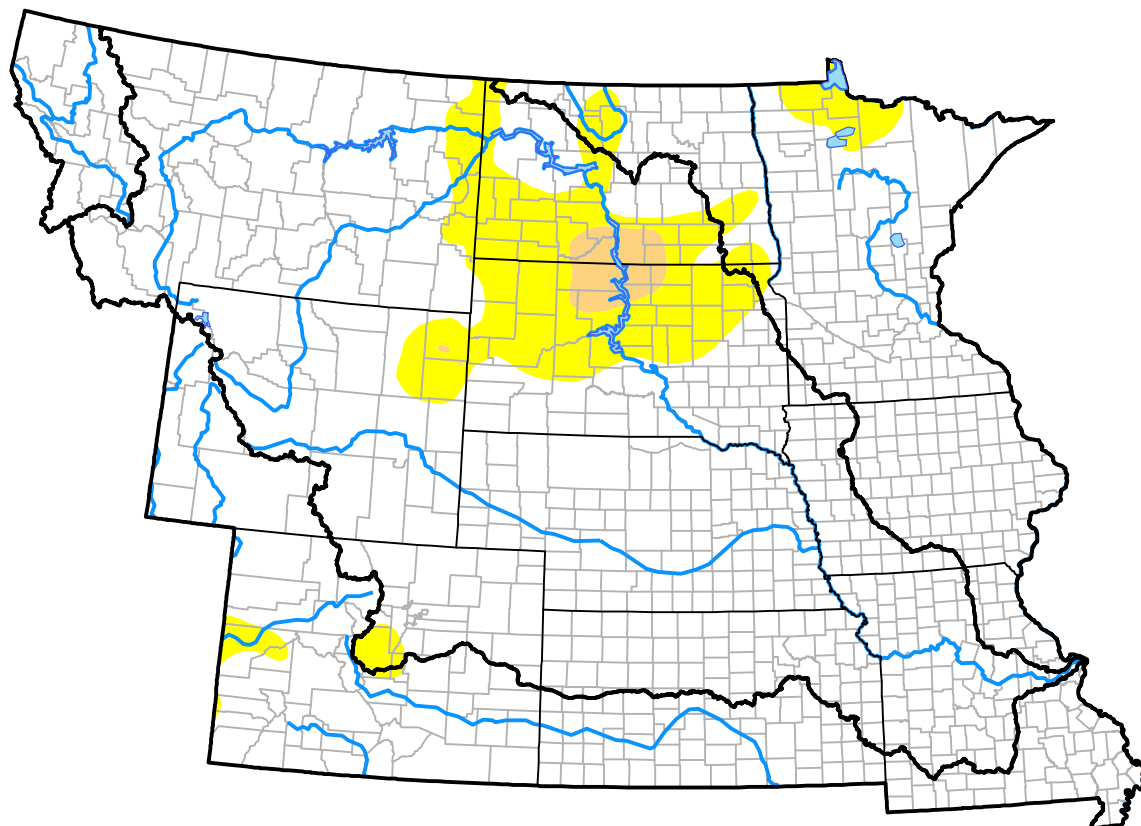
U.S. Drought Monitor

Missouri River Basin RDEWS

May 23, 2017

(Released Thursday, May. 25, 2017)

Valid 8 a.m. EDT



Drought Conditions (Percent Area)

	None	D0-D4	D1-D4	D2-D4	D3-D4	D4
Current	84.52	15.48	1.93	0.00	0.00	0.00
Last Week 05-18-2017	86.20	13.80	0.11	0.00	0.00	0.00
3 Months Ago 02-23-2017	62.79	37.21	16.06	0.04	0.00	0.00
Start of Calendar Year 01-05-2017	55.38	44.62	16.00	1.41	0.00	0.00
Start of Water Year 09-29-2016	68.23	31.77	12.23	3.65	0.26	0.00
One Year Ago 05-26-2016	88.50	11.50	2.74	0.20	0.00	0.00

Intensity:

None	D2 Severe Drought
D0 Abnormally Dry	D3 Extreme Drought
D1 Moderate Drought	D4 Exceptional Drought

The Drought Monitor focuses on broad-scale conditions. Local conditions may vary. For more information on the Drought Monitor, go to <https://droughtmonitor.unl.edu/About.aspx>

Author:

Brad Rippey
U.S. Department of Agriculture



droughtmonitor.unl.edu