

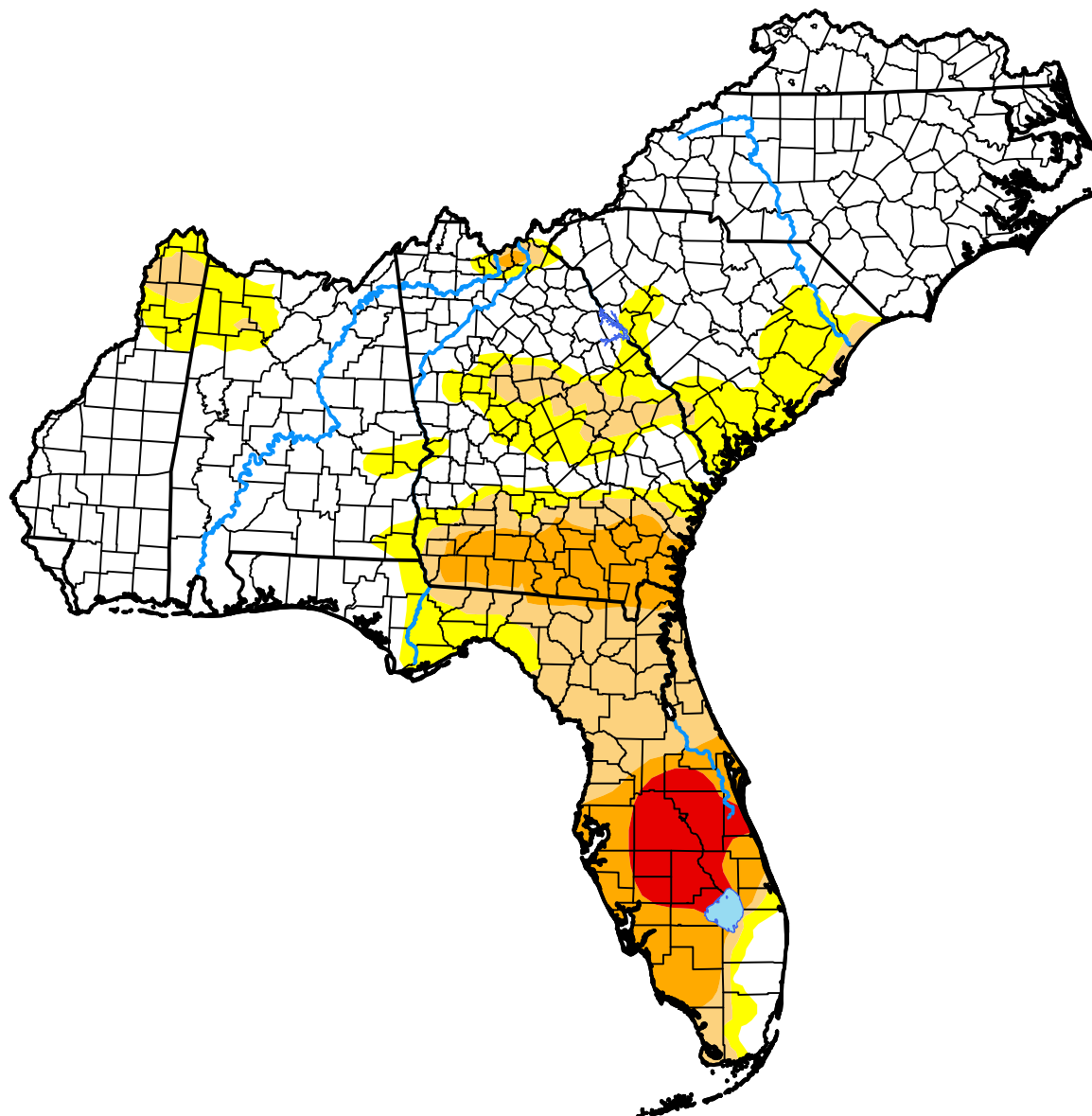
U.S. Drought Monitor

South Atlantic-Gulf Watershed

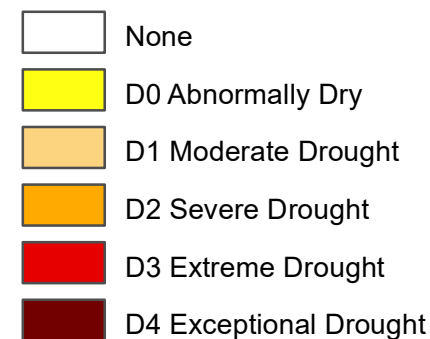
May 30, 2017

(Released Thursday, Jun. 1, 2017)

Valid 8 a.m. EDT



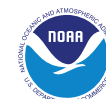
Intensity:



The Drought Monitor focuses on broad-scale conditions. Local conditions may vary. For more information on the Drought Monitor, go to <https://droughtmonitor.unl.edu/About.aspx>

Author:

Chris Fenimore
NCEI/NESDIS/NOAA



droughtmonitor.unl.edu