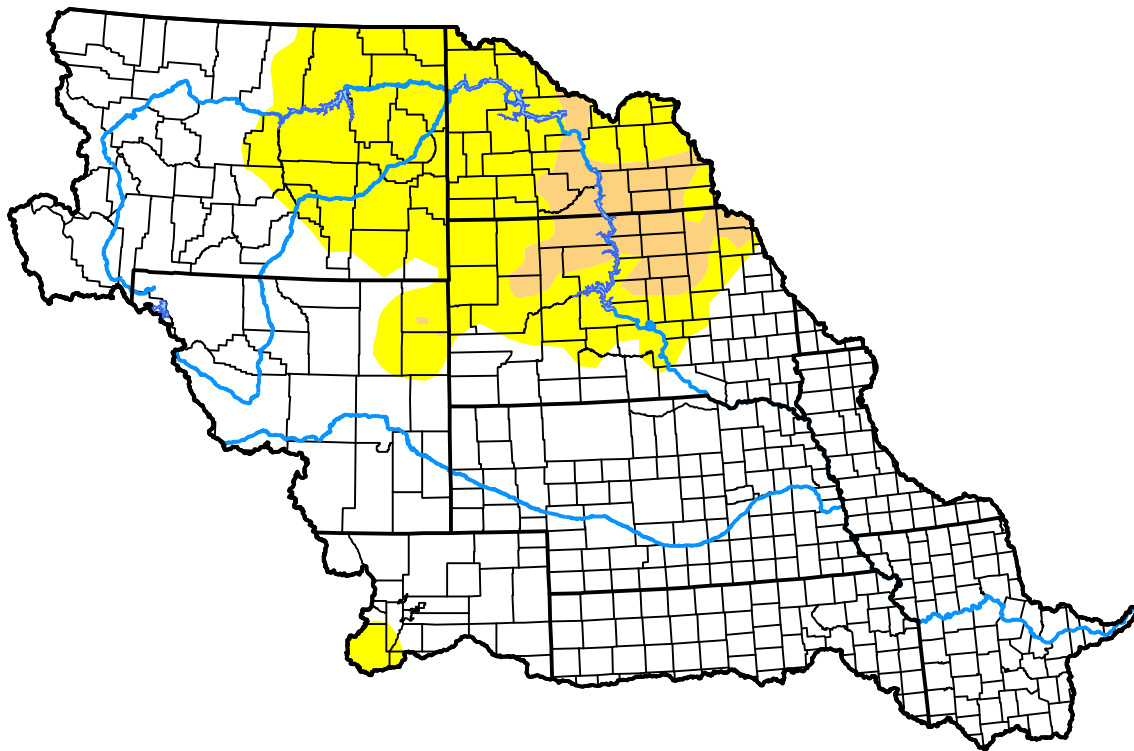


U.S. Drought Monitor

Missouri Watershed

May 30, 2017
 (Released Thursday, Jun. 1, 2017)
 Valid 8 a.m. EDT



Drought Conditions (Percent Area)

	None	D0	D1	D2	D3	D4
Current	72.07	22.62	5.31	0.00	0.00	0.00
Last Week <i>05-25-2017</i>	84.49	13.58	1.93	0.00	0.00	0.00
3 Months Ago <i>03-02-2017</i>	65.09	17.24	17.64	0.04	0.00	0.00
Start of Calendar Year <i>01-05-2017</i>	55.33	28.67	14.60	1.41	0.00	0.00
Start of Water Year <i>09-29-2016</i>	68.17	19.59	8.59	3.39	0.26	0.00
One Year Ago <i>06-02-2016</i>	86.40	11.00	2.60	0.00	0.00	0.00

Intensity:

- None
- D0 Abnormally Dry
- D1 Moderate Drought
- D2 Severe Drought
- D3 Extreme Drought
- D4 Exceptional Drought

The Drought Monitor focuses on broad-scale conditions. Local conditions may vary. For more information on the Drought Monitor, go to <https://droughtmonitor.unl.edu/About.aspx>

Author:

Chris Fenimore
 NCEI/NESDIS/NOAA



droughtmonitor.unl.edu