

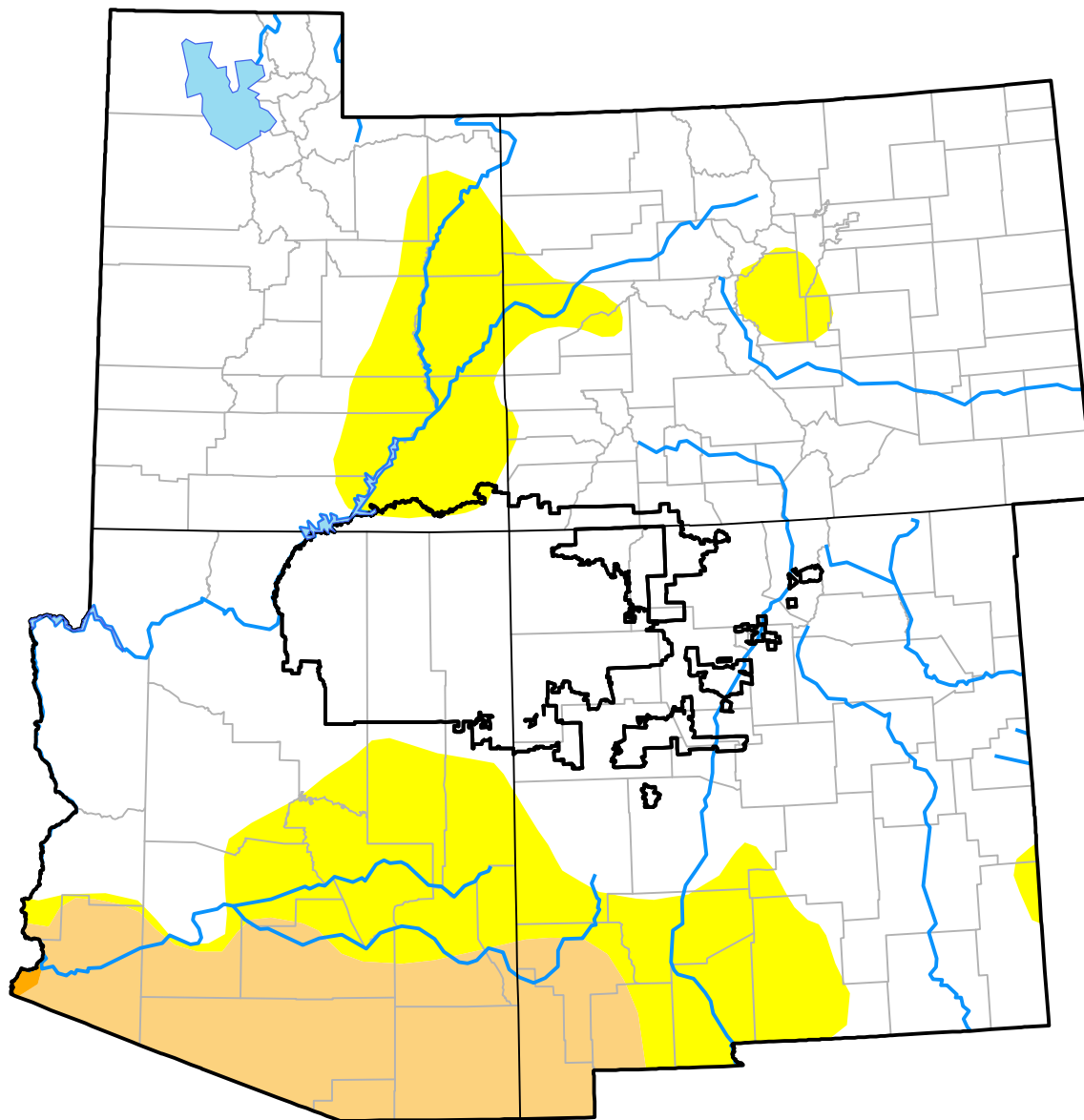
# Southwest Corners RDEWS and Surrounding Areas

(Released Thursday, Jun. 8, 2017)

Valid 8 a.m. EDT

Drought Conditions (Percent Area)

	None	D0-D4	D1-D4	D2-D4	D3-D4	D4
<b>Current</b>	74.63	25.37	9.35	0.06	0.00	0.00
<b>Last Week</b> <i>06-01-2017</i>	74.73	25.27	9.35	0.06	0.00	0.00
<b>3 Months Ago</b> <i>03-09-2017</i>	70.92	29.08	13.47	0.55	0.05	0.00
<b>Start of Calendar Year</b> <i>01-05-2017</i>	46.78	53.22	19.65	1.69	0.00	0.00
<b>Start of Water Year</b> <i>09-29-2016</i>	42.64	57.36	16.56	1.61	0.00	0.00
<b>One Year Ago</b> <i>06-09-2016</i>	40.82	59.18	26.08	2.15	0.00	0.00



**Intensity:**

- None
- D0 Abnormally Dry
- D1 Moderate Drought
- D2 Severe Drought
- D3 Extreme Drought
- D4 Exceptional Drought

The Drought Monitor focuses on broad-scale conditions. Local conditions may vary. For more information on the Drought Monitor, go to <https://droughtmonitor.unl.edu/About.aspx>

**Author:**

Deborah Bathke  
National Drought Mitigation Center

