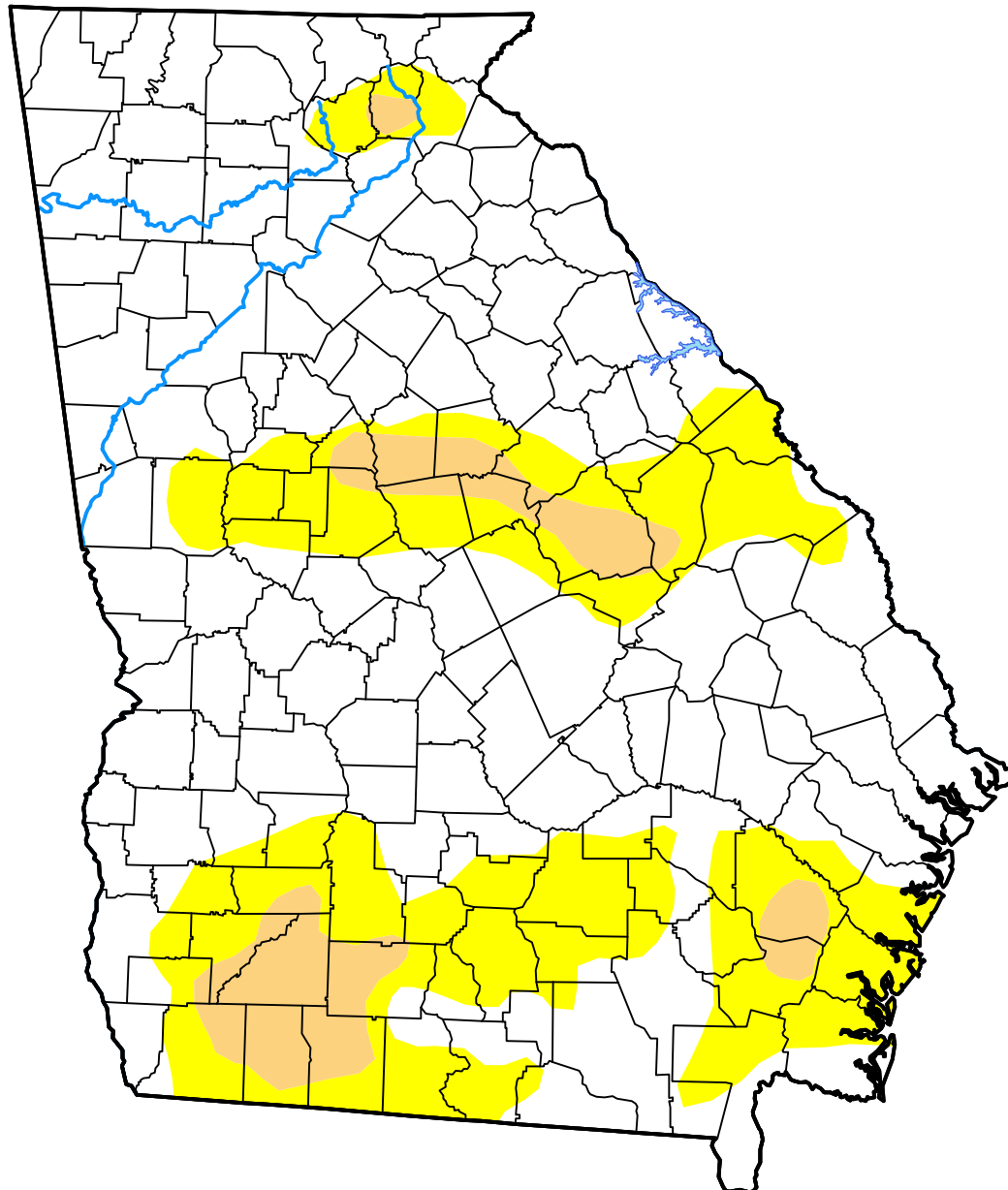


U.S. Drought Monitor

Georgia

June 20, 2017
 (Released Thursday, Jun. 22, 2017)
 Valid 8 a.m. EDT



Drought Conditions (Percent Area)

	None	D0-D4	D1-D4	D2-D4	D3-D4	D4
Current	69.77	30.23	6.40	0.00	0.00	0.00
Last Week <i>06-15-2017</i>	62.83	37.17	16.60	2.39	0.00	0.00
3 Months Ago <i>03-23-2017</i>	38.50	61.50	26.89	19.08	6.94	0.00
Start of Calendar Year <i>01-05-2017</i>	11.31	88.69	73.48	39.33	19.28	0.00
Start of Water Year <i>09-29-2016</i>	35.37	64.63	45.84	34.50	14.67	1.58
One Year Ago <i>06-23-2016</i>	52.37	47.63	31.61	14.55	0.00	0.00

Intensity:

- None
- D0 Abnormally Dry
- D1 Moderate Drought
- D2 Severe Drought
- D3 Extreme Drought
- D4 Exceptional Drought

The Drought Monitor focuses on broad-scale conditions. Local conditions may vary. For more information on the Drought Monitor, go to <https://droughtmonitor.unl.edu/About.aspx>

Author:

David Miskus
 NOAA/NWS/NCEP/CPC

