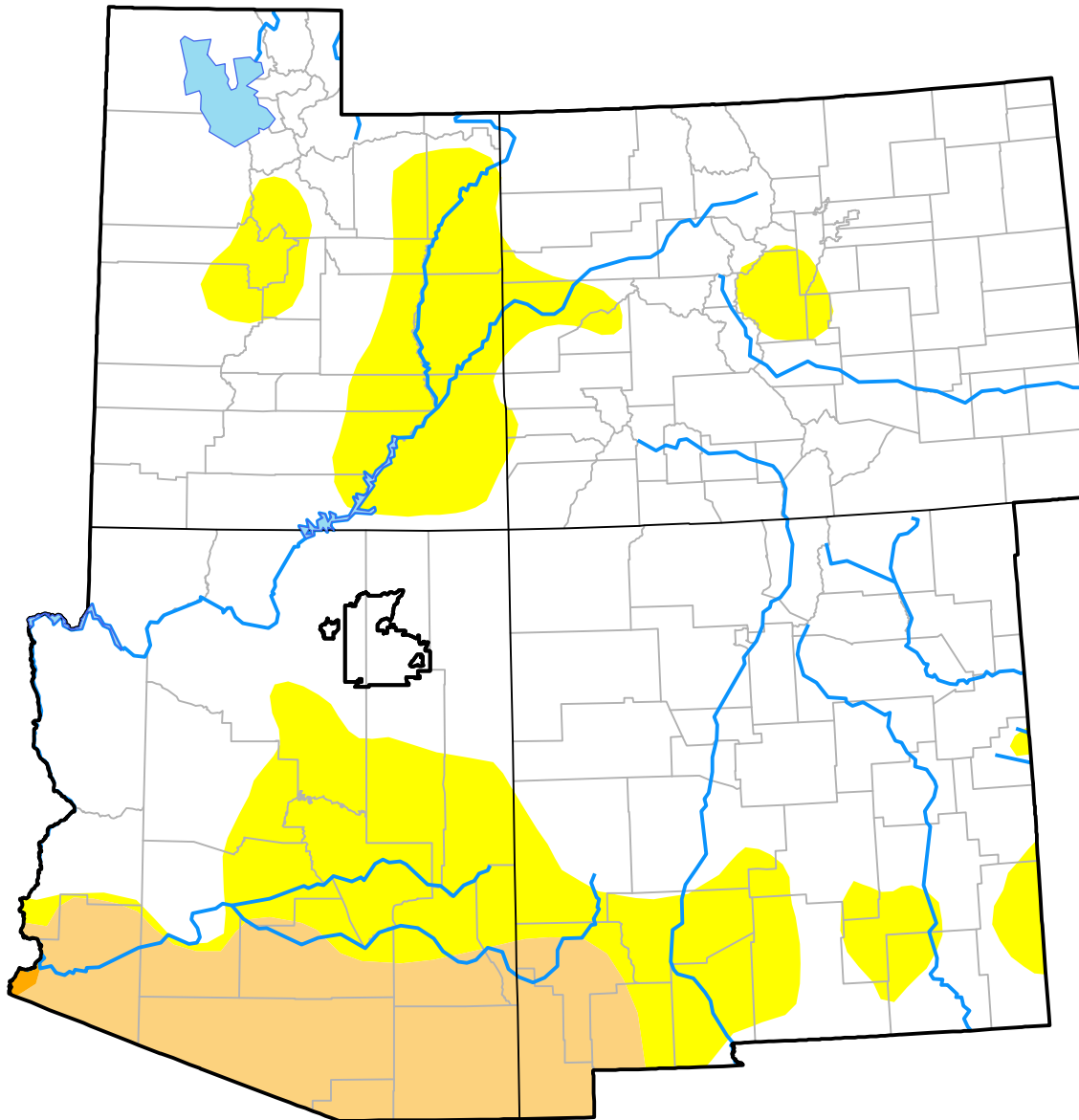


U.S. Drought Monitor Hopi RDEWS

June 20, 2017
(Released Thursday, Jun. 22, 2017)
Valid 8 a.m. EDT

Drought Conditions (Percent Area)

	None	D0	D1	D2	D3	D4
Current	100.00	0.00	0.00	0.00	0.00	0.00
Last Week <i>06-15-2017</i>	100.00	0.00	0.00	0.00	0.00	0.00
3 Months Ago <i>03-23-2017</i>	100.00	0.00	0.00	0.00	0.00	0.00
Start of Calendar Year <i>01-05-2017</i>	0.00	50.32	49.68	0.00	0.00	0.00
Start of Water Year <i>09-29-2016</i>	0.00	50.32	49.68	0.00	0.00	0.00
One Year Ago <i>06-23-2016</i>	0.00	100.00	0.00	0.00	0.00	0.00



Intensity:

- None
- D0 Abnormally Dry
- D1 Moderate Drought
- D2 Severe Drought
- D3 Extreme Drought
- D4 Exceptional Drought

The Drought Monitor focuses on broad-scale conditions. Local conditions may vary. For more information on the Drought Monitor, go to <https://droughtmonitor.unl.edu/About.aspx>

Author:

David Miskus
NOAA/NWS/NCEP/CPC



droughtmonitor.unl.edu