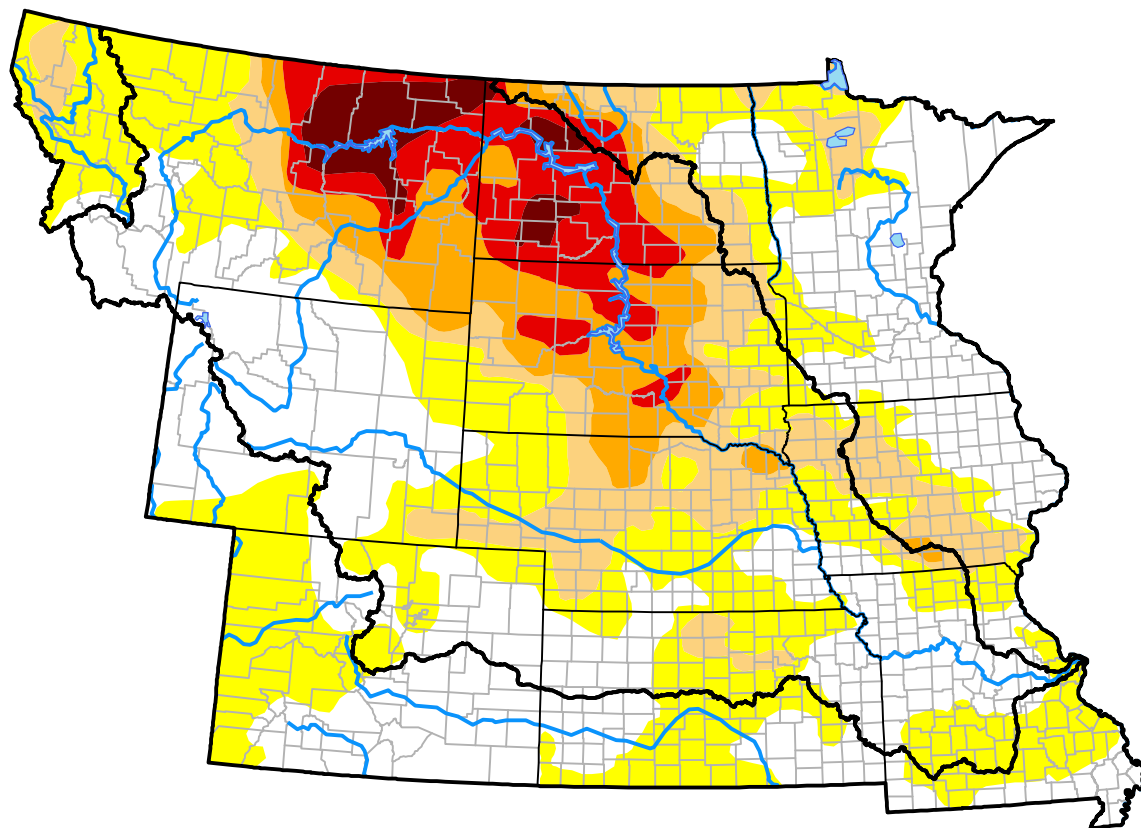


U.S. Drought Monitor

Missouri River Basin RDEWS

July 25, 2017
 (Released Thursday, Jul. 27, 2017)
 Valid 8 a.m. EDT



Drought Conditions (Percent Area)

	None	D0	D1	D2	D3	D4
Current	29.97	27.63	14.80	12.64	10.51	4.45
Last Week <i>07-20-2017</i>	38.21	22.31	12.95	13.24	11.98	1.31
3 Months Ago <i>04-27-2017</i>	79.21	17.52	3.27	0.00	0.00	0.00
Start of Calendar Year <i>01-05-2017</i>	55.38	28.62	14.59	1.41	0.00	0.00
Start of Water Year <i>09-29-2016</i>	68.23	19.54	8.58	3.39	0.26	0.00
One Year Ago <i>07-28-2016</i>	59.81	24.32	11.44	2.53	1.91	0.00

Intensity:



The Drought Monitor focuses on broad-scale conditions. Local conditions may vary. For more information on the Drought Monitor, go to <https://droughtmonitor.unl.edu/About.aspx>

Author:

Richard Heim
 NCEI/NOAA



droughtmonitor.unl.edu