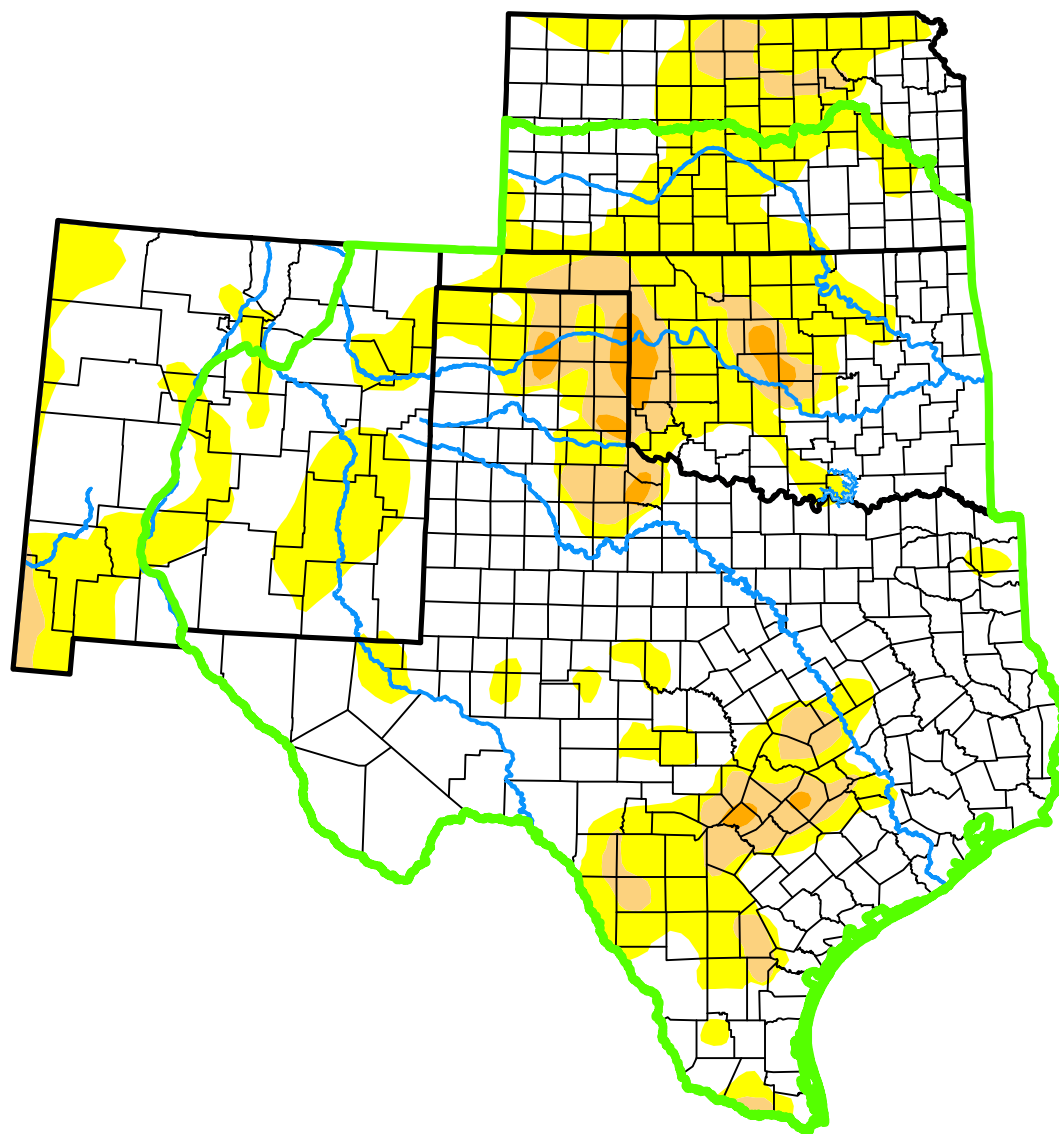


*U.S. Drought Monitor*

# Southern Plains DEWS and Surrounding Areas

**July 25, 2017**  
(Released Thursday, Jul. 27, 2017)  
Valid 8 a.m. EDT



*Intensity:*



*The Drought Monitor focuses on broad-scale conditions. Local conditions may vary. For more information on the Drought Monitor, go to <https://droughtmonitor.unl.edu/About.aspx>*

*Author:*

Richard Heim  
NCEI/NOAA



[droughtmonitor.unl.edu](https://droughtmonitor.unl.edu)