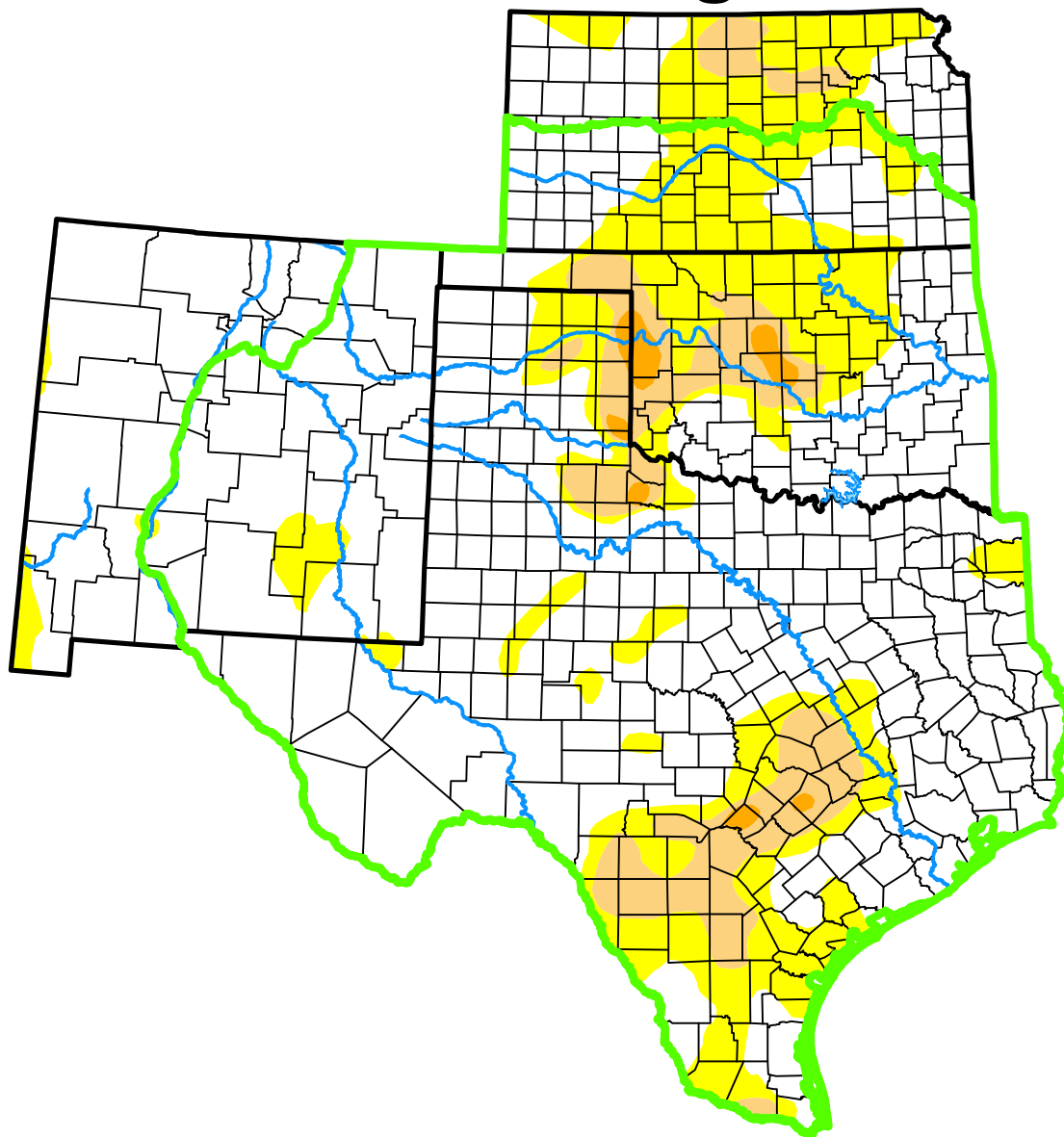


U.S. Drought Monitor

Southern Plains DEWS

and Surrounding Areas



August 1, 2017
 (Released Thursday, Aug. 3, 2017)
 Valid 8 a.m. EDT

Drought Conditions (Percent Area)

	None	D0-D4	D1-D4	D2-D4	D3-D4	D4
Current	70.79	29.21	8.90	1.02	0.00	0.00
Last Week 07-25-2017	66.61	33.39	7.98	1.40	0.00	0.00
3 Months Ago 05-02-2017	90.93	9.07	1.54	0.00	0.00	0.00
Start of Calendar Year 01-03-2017	58.87	41.13	21.68	12.58	0.91	0.00
Start of Water Year 09-27-2016	85.87	14.13	3.85	0.48	0.00	0.00
One Year Ago 08-02-2016	59.41	40.59	7.87	0.48	0.00	0.00

(Statistics for area highlighted in green)

Intensity:

None	D2 Severe Drought
D0 Abnormally Dry	D3 Extreme Drought
D1 Moderate Drought	D4 Exceptional Drought

The Drought Monitor focuses on broad-scale conditions. Local conditions may vary. For more information on the Drought Monitor, go to <https://droughtmonitor.unl.edu/About.aspx>

Author:

Deborah Bathke
 National Drought Mitigation Center



droughtmonitor.unl.edu