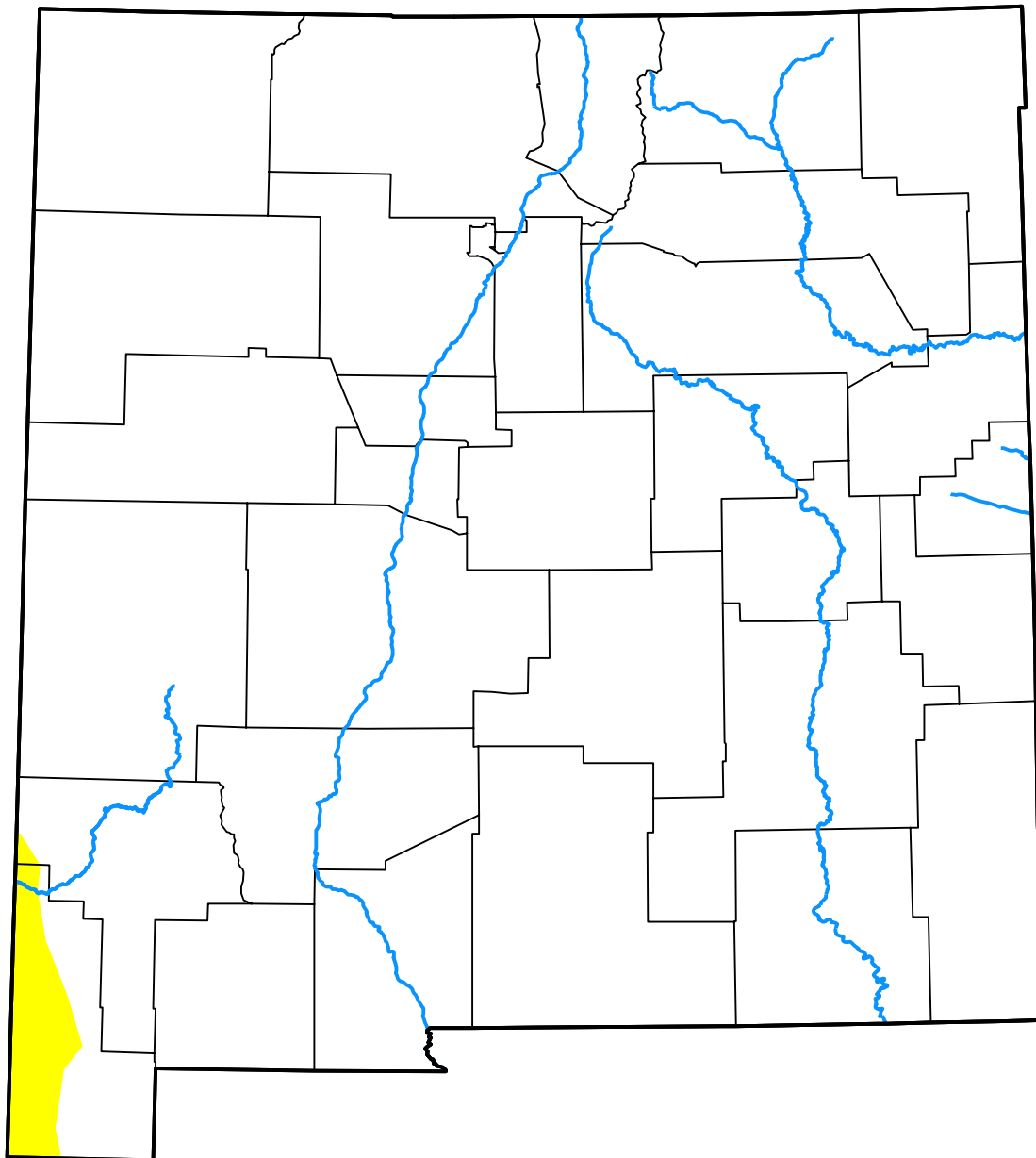


U.S. Drought Monitor New Mexico



August 8, 2017
(Released Thursday, Aug. 10, 2017)
Valid 8 a.m. EDT

Drought Conditions (Percent Area)

	None	D0	D1	D2	D3	D4
Current	98.66	1.34	0.00	0.00	0.00	0.00
Last Week <i>08-03-2017</i>	95.00	5.00	0.00	0.00	0.00	0.00
3 Months Ago <i>05-11-2017</i>	81.51	11.93	6.56	0.00	0.00	0.00
Start of Calendar Year <i>01-05-2017</i>	66.20	29.52	4.28	0.00	0.00	0.00
Start of Water Year <i>09-29-2016</i>	53.33	42.83	3.85	0.00	0.00	0.00
One Year Ago <i>08-11-2016</i>	4.96	68.04	27.00	0.00	0.00	0.00

Intensity:

None	D2 Severe Drought
D0 Abnormally Dry	D3 Extreme Drought
D1 Moderate Drought	D4 Exceptional Drought

The Drought Monitor focuses on broad-scale conditions. Local conditions may vary. For more information on the Drought Monitor, go to <https://droughtmonitor.unl.edu/About.aspx>

Author:

Deborah Bathke
National Drought Mitigation Center



droughtmonitor.unl.edu