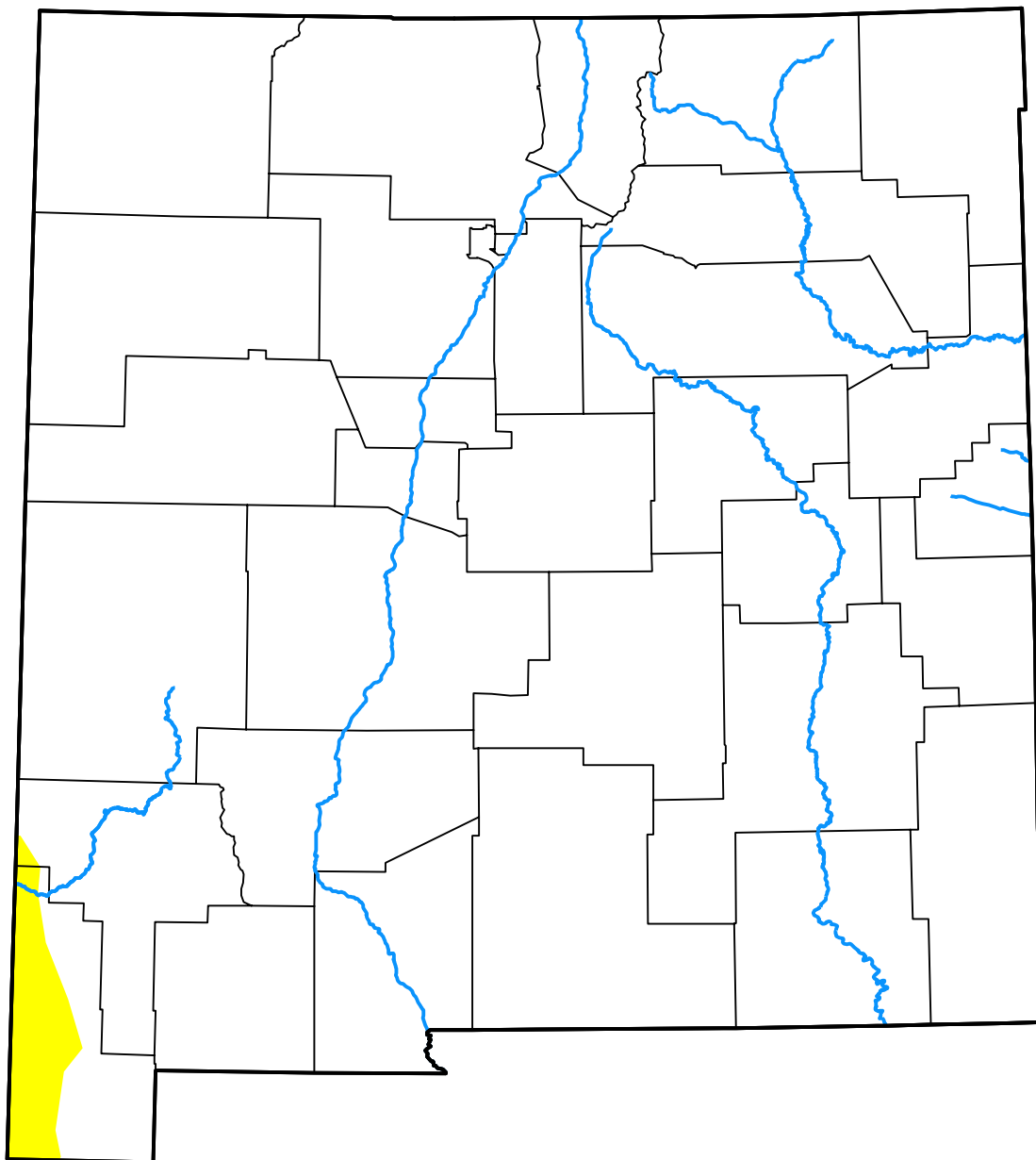


U.S. Drought Monitor New Mexico



August 8, 2017
(Released Thursday, Aug. 10, 2017)
Valid 8 a.m. EDT

Drought Conditions (Percent Area)

	None	D0-D4	D1-D4	D2-D4	D3-D4	D4
Current	98.66	1.34	0.00	0.00	0.00	0.00
Last Week 08-03-2017	95.00	5.00	0.00	0.00	0.00	0.00
3 Months Ago 05-11-2017	81.51	18.49	6.56	0.00	0.00	0.00
Start of Calendar Year 01-05-2017	66.20	33.80	4.28	0.00	0.00	0.00
Start of Water Year 09-29-2016	53.33	46.67	3.85	0.00	0.00	0.00
One Year Ago 08-11-2016	4.96	95.04	27.00	0.00	0.00	0.00

Intensity:

None	D2 Severe Drought
D0 Abnormally Dry	D3 Extreme Drought
D1 Moderate Drought	D4 Exceptional Drought

The Drought Monitor focuses on broad-scale conditions. Local conditions may vary. For more information on the Drought Monitor, go to <https://droughtmonitor.unl.edu/About.aspx>

Author:

Deborah Bathke
National Drought Mitigation Center



droughtmonitor.unl.edu