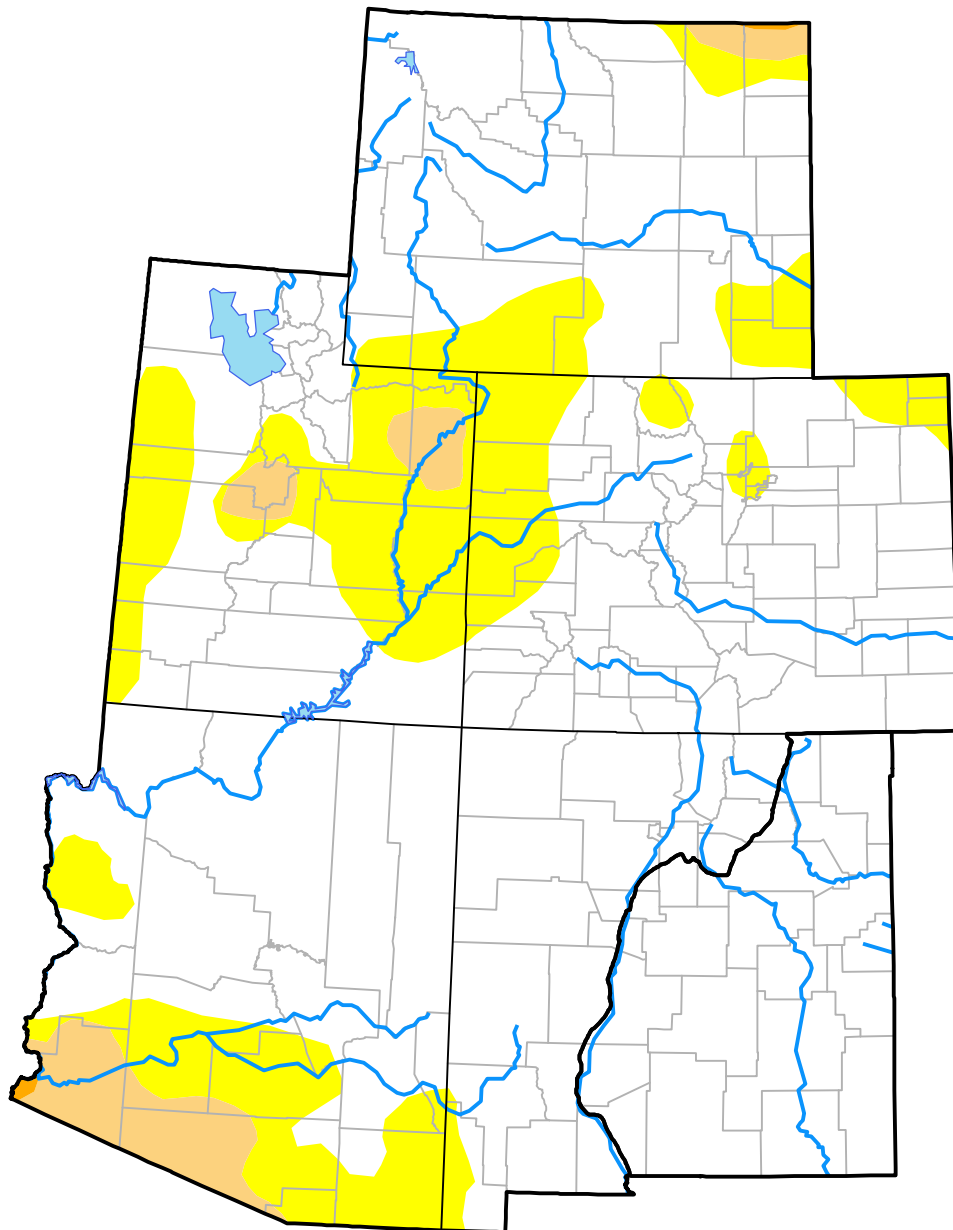


U.S. Drought Monitor

Intermountain West RDEWS

August 8, 2017
 (Released Thursday, Aug. 10, 2017)
 Valid 8 a.m. EDT



Drought Conditions (Percent Area)

	None	D0	D1	D2	D3	D4
Current	78.45	17.81	3.65	0.09	0.00	0.00
Last Week <i>08-03-2017</i>	74.20	21.55	3.98	0.27	0.00	0.00
3 Months Ago <i>05-11-2017</i>	79.05	13.17	7.72	0.05	0.00	0.00
Start of Calendar Year <i>01-05-2017</i>	49.44	31.67	17.38	1.51	0.00	0.00
Start of Water Year <i>09-29-2016</i>	42.41	39.56	14.85	3.17	0.00	0.00
One Year Ago <i>08-11-2016</i>	31.36	42.09	24.02	1.85	0.69	0.00

Intensity:



The Drought Monitor focuses on broad-scale conditions. Local conditions may vary. For more information on the Drought Monitor, go to <https://droughtmonitor.unl.edu/About.aspx>

Author:

Deborah Bathke
 National Drought Mitigation Center

