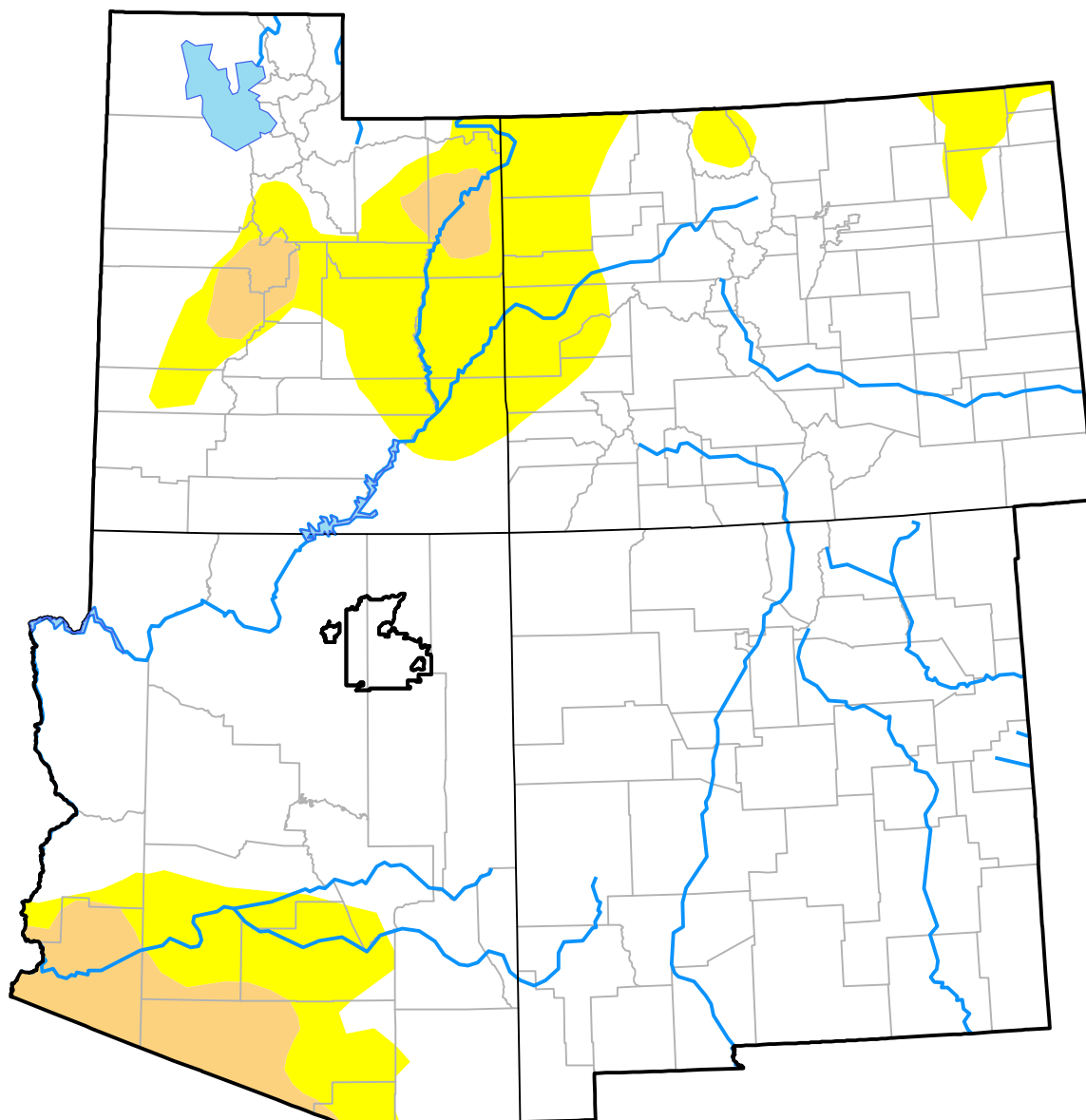


# U.S. Drought Monitor

## Hopi RDEWS

**August 22, 2017**  
(Released Thursday, Aug. 24, 2017)  
Valid 8 a.m. EDT



### Intensity:

-  None
-  D0 Abnormally Dry
-  D1 Moderate Drought
-  D2 Severe Drought
-  D3 Extreme Drought
-  D4 Exceptional Drought

*The Drought Monitor focuses on broad-scale conditions. Local conditions may vary. For more information on the Drought Monitor, go to <https://droughtmonitor.unl.edu/About.aspx>*

### Author:

Chris Fenimore  
NCEI/NESDIS/NOAA



**droughtmonitor.unl.edu**