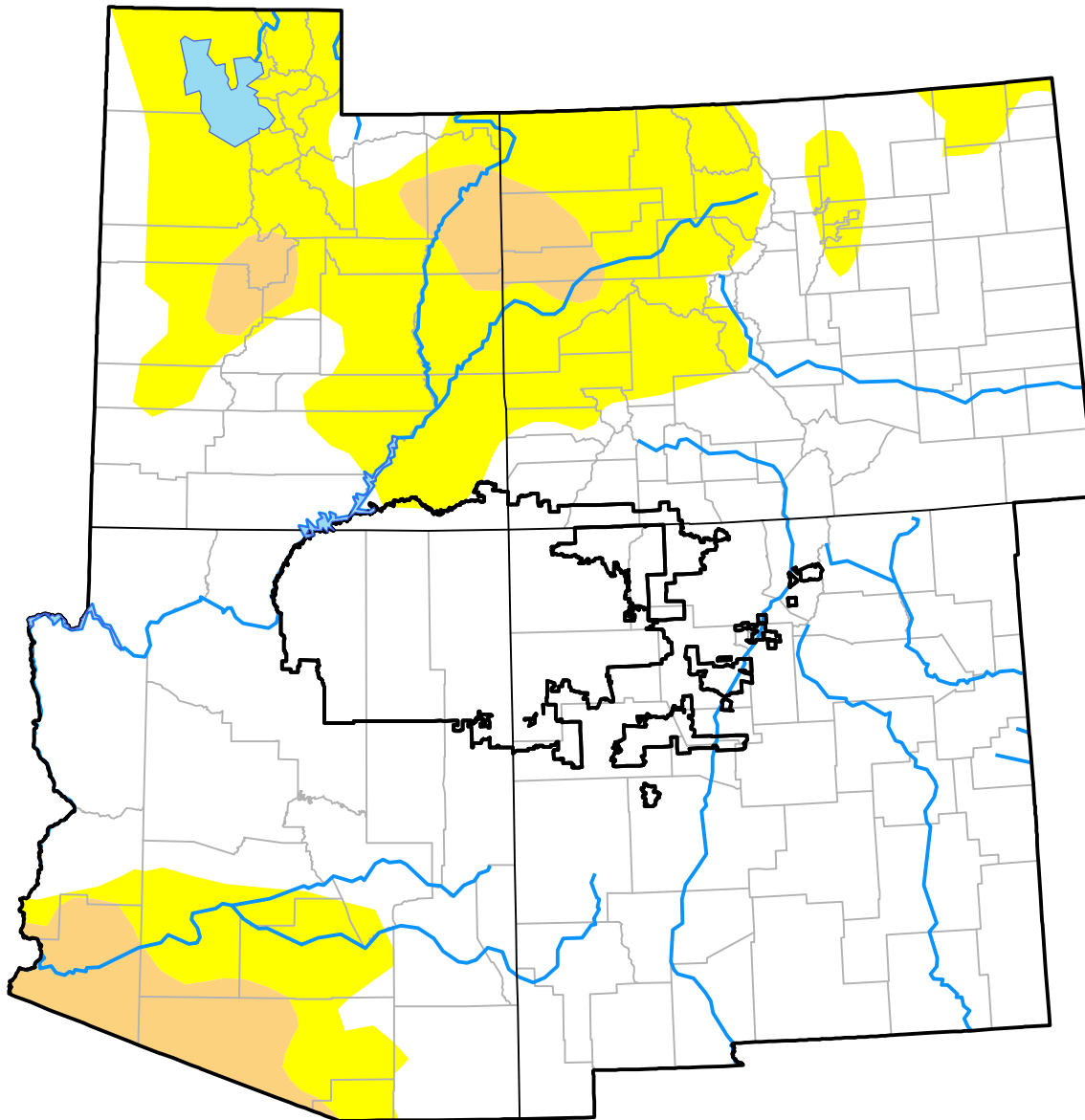


Corners RDEWS and Surrounding Areas

Drought Conditions (Percent Area)

	None	D0	D1	D2	D3	D4
Current	71.81	22.85	5.35	0.00	0.00	0.00
Last Week <i>09-14-2017</i>	71.82	22.83	5.35	0.00	0.00	0.00
3 Months Ago <i>06-22-2017</i>	71.75	18.89	9.29	0.06	0.00	0.00
Start of Calendar Year <i>01-05-2017</i>	46.78	33.57	17.96	1.69	0.00	0.00
Start of Water Year <i>09-29-2016</i>	42.64	40.80	14.95	1.61	0.00	0.00
One Year Ago <i>09-22-2016</i>	35.84	47.11	15.16	1.89	0.00	0.00



Intensity:

- None
- D0 Abnormally Dry
- D1 Moderate Drought
- D2 Severe Drought
- D3 Extreme Drought
- D4 Exceptional Drought

The Drought Monitor focuses on broad-scale conditions. Local conditions may vary. For more information on the Drought Monitor, go to <https://droughtmonitor.unl.edu/About.aspx>

Author:

Brad Rippey
U.S. Department of Agriculture

