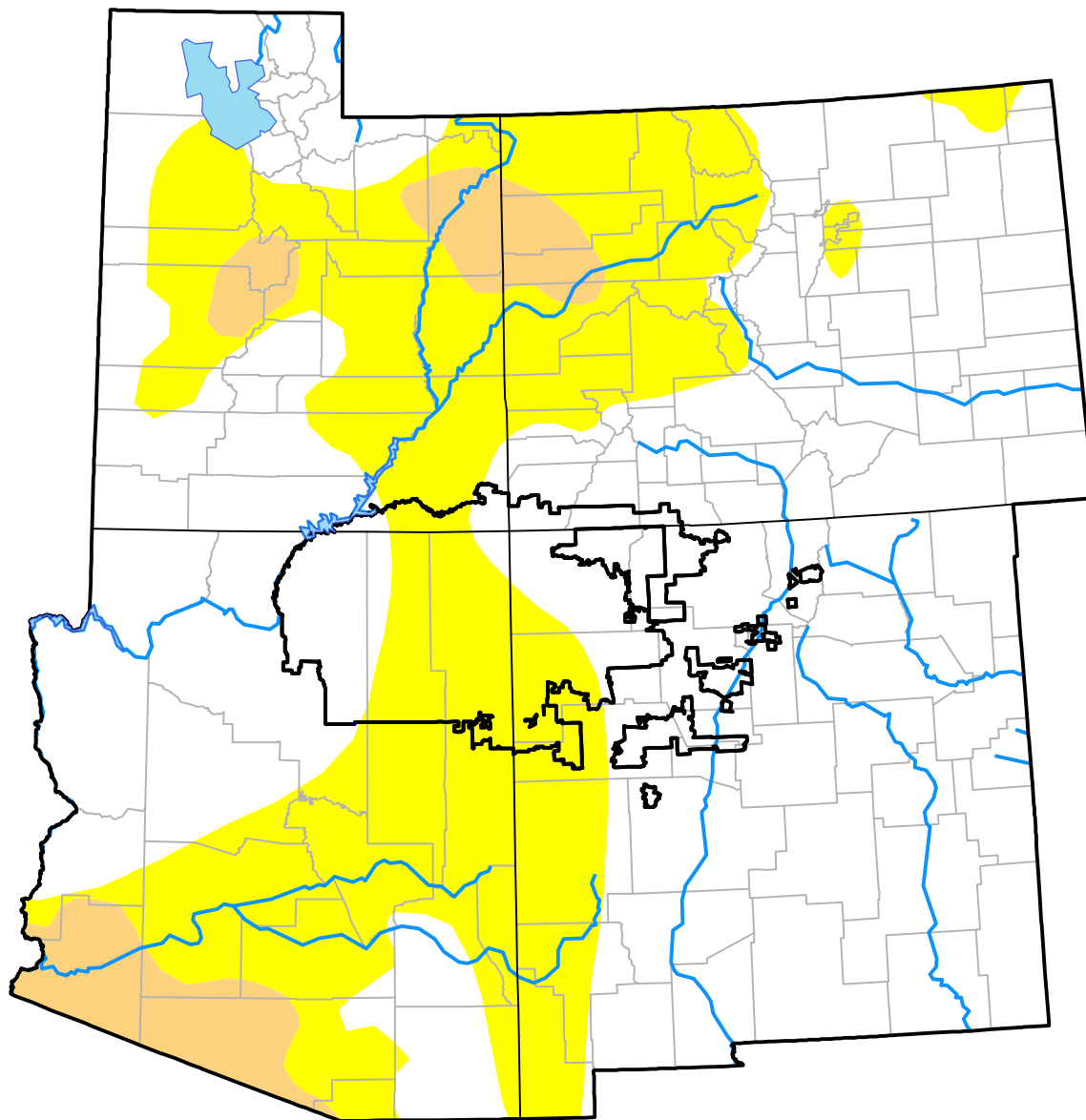


# U.S. Drought Monitor

## Four Corners RDEWS

**September 26, 2017**  
*(Released Thursday, Sep. 28, 2017)*  
 Valid 8 a.m. EDT



*Drought Conditions (Percent Area)*

	None	D0	D1	D2	D3	D4
<b>Current</b>	55.63	44.37	0.00	0.00	0.00	0.00
<b>Last Week</b> <i>09-21-2017</i>	99.67	0.33	0.00	0.00	0.00	0.00
<b>3 Months Ago</b> <i>06-29-2017</i>	98.23	1.77	0.00	0.00	0.00	0.00
<b>Start of Calendar Year</b> <i>01-05-2017</i>	46.06	33.34	20.60	0.00	0.00	0.00
<b>Start of Water Year</b> <i>09-29-2016</i>	5.69	65.61	28.71	0.00	0.00	0.00
<b>One Year Ago</b> <i>09-29-2016</i>	5.69	65.61	28.71	0.00	0.00	0.00

### Intensity:

None	D2 Severe Drought
D0 Abnormally Dry	D3 Extreme Drought
D1 Moderate Drought	D4 Exceptional Drought

*The Drought Monitor focuses on broad-scale conditions. Local conditions may vary. For more information on the Drought Monitor, go to <https://droughtmonitor.unl.edu/About.aspx>*

### Author:

Brad Rippey  
 U.S. Department of Agriculture



**droughtmonitor.unl.edu**