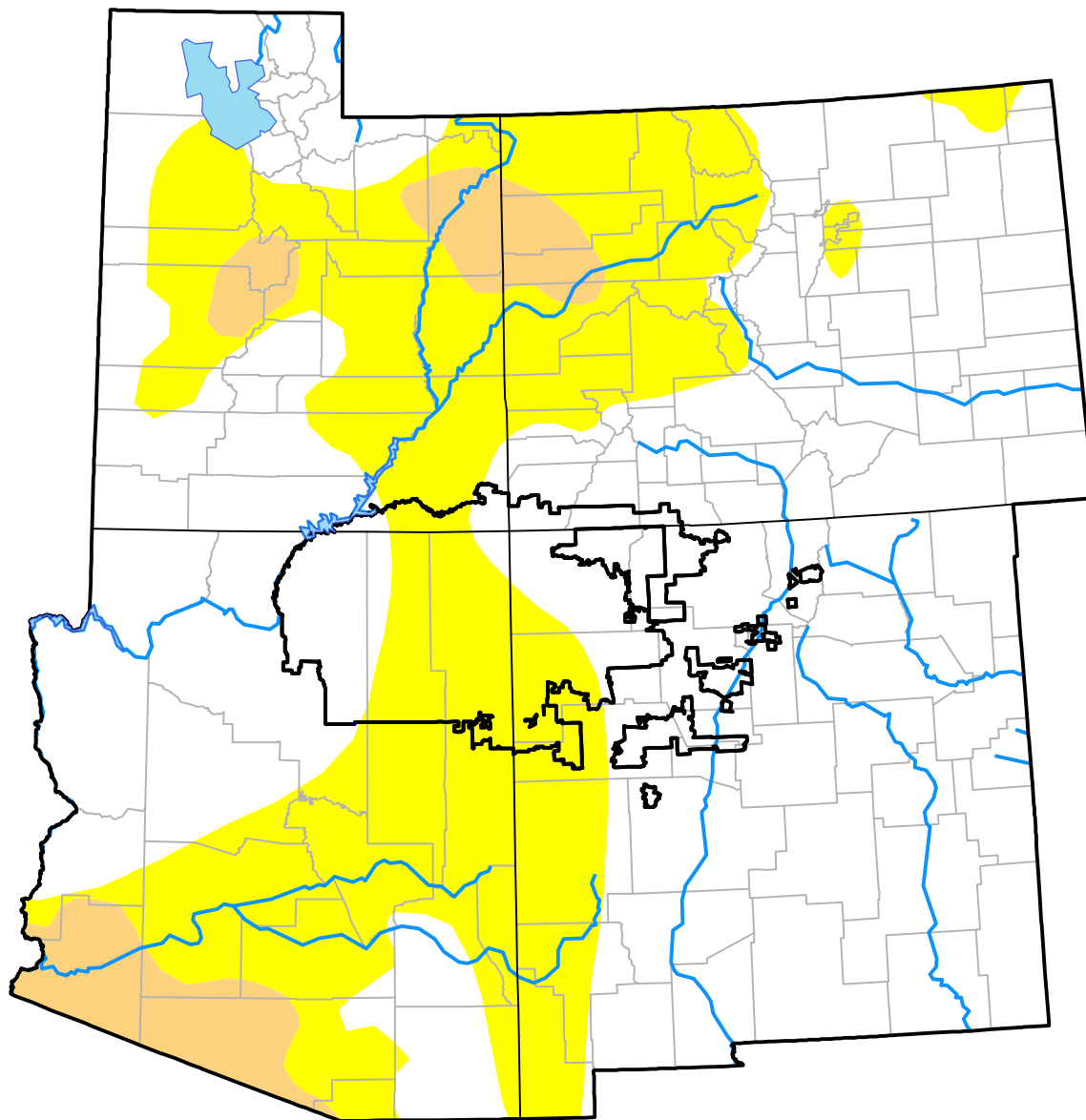


U.S. Drought Monitor

Four Corners RDEWS

September 26, 2017
(Released Thursday, Sep. 28, 2017)
 Valid 8 a.m. EDT



Drought Conditions (Percent Area)

	None	D0-D4	D1-D4	D2-D4	D3-D4	D4
Current	55.63	44.37	0.00	0.00	0.00	0.00
Last Week <i>09-21-2017</i>	99.67	0.33	0.00	0.00	0.00	0.00
3 Months Ago <i>06-29-2017</i>	98.23	1.77	0.00	0.00	0.00	0.00
Start of Calendar Year <i>01-05-2017</i>	46.06	53.94	20.60	0.00	0.00	0.00
Start of Water Year <i>09-29-2016</i>	5.69	94.31	28.71	0.00	0.00	0.00
One Year Ago <i>09-29-2016</i>	5.69	94.31	28.71	0.00	0.00	0.00

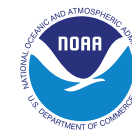
Intensity:

None	D2 Severe Drought
D0 Abnormally Dry	D3 Extreme Drought
D1 Moderate Drought	D4 Exceptional Drought

The Drought Monitor focuses on broad-scale conditions. Local conditions may vary. For more information on the Drought Monitor, go to <https://droughtmonitor.unl.edu/About.aspx>

Author:

Brad Rippey
 U.S. Department of Agriculture



droughtmonitor.unl.edu