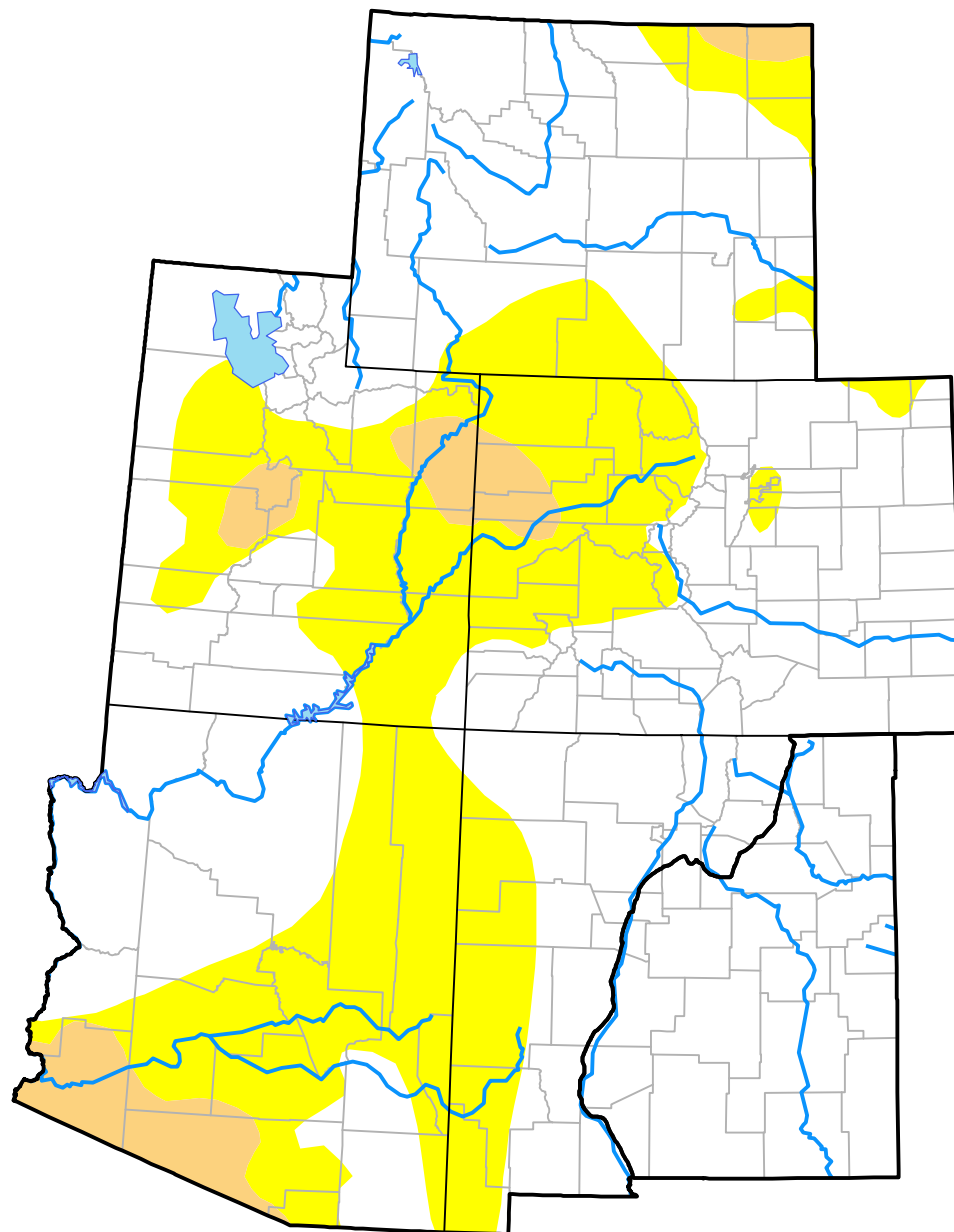


U.S. Drought Monitor

Intermountain West RDEWS

September 26, 2017
 (Released Thursday, Sep. 28, 2017)
 Valid 8 a.m. EDT



Drought Conditions (Percent Area)

	None	D0	D1	D2	D3	D4
Current	66.55	28.71	4.74	0.00	0.00	0.00
Last Week <i>09-21-2017</i>	71.74	23.52	4.74	0.00	0.00	0.00
3 Months Ago <i>06-29-2017</i>	75.35	16.64	7.96	0.05	0.00	0.00
Start of Calendar Year <i>01-05-2017</i>	49.44	31.67	17.38	1.51	0.00	0.00
Start of Water Year <i>09-29-2016</i>	42.41	39.56	14.85	3.17	0.00	0.00
One Year Ago <i>09-29-2016</i>	42.41	39.56	14.85	3.17	0.00	0.00

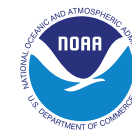
Intensity:

 None	 D2 Severe Drought
 D0 Abnormally Dry	 D3 Extreme Drought
 D1 Moderate Drought	 D4 Exceptional Drought

The Drought Monitor focuses on broad-scale conditions. Local conditions may vary. For more information on the Drought Monitor, go to <https://droughtmonitor.unl.edu/About.aspx>

Author:

Brad Rippey
 U.S. Department of Agriculture



droughtmonitor.unl.edu