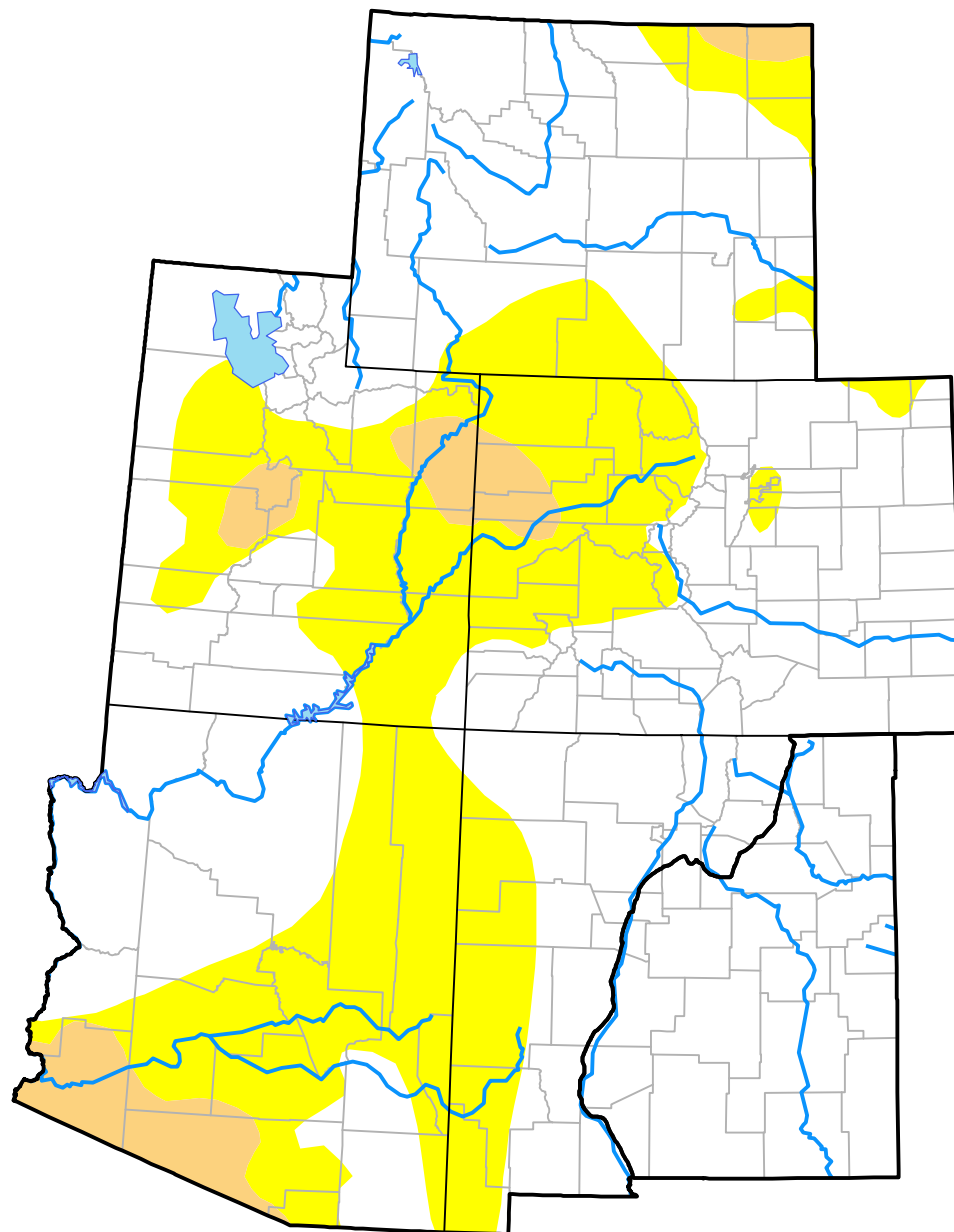


# U.S. Drought Monitor

## Intermountain West RDEWS

**September 26, 2017**  
 (Released Thursday, Sep. 28, 2017)  
 Valid 8 a.m. EDT



*Drought Conditions (Percent Area)*

	None	D0-D4	D1-D4	D2-D4	D3-D4	D4
<b>Current</b>	66.55	33.45	4.74	0.00	0.00	0.00
<b>Last Week</b> 09-21-2017	71.74	28.26	4.74	0.00	0.00	0.00
<b>3 Months Ago</b> 06-29-2017	75.35	24.65	8.01	0.05	0.00	0.00
<b>Start of Calendar Year</b> 01-05-2017	49.44	50.56	18.89	1.51	0.00	0.00
<b>Start of Water Year</b> 09-29-2016	42.41	57.59	18.03	3.17	0.00	0.00
<b>One Year Ago</b> 09-29-2016	42.41	57.59	18.03	3.17	0.00	0.00

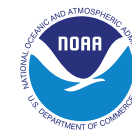
### Intensity:

 None	 D2 Severe Drought
 D0 Abnormally Dry	 D3 Extreme Drought
 D1 Moderate Drought	 D4 Exceptional Drought

*The Drought Monitor focuses on broad-scale conditions. Local conditions may vary. For more information on the Drought Monitor, go to <https://droughtmonitor.unl.edu/About.aspx>*

### Author:

Brad Rippey  
 U.S. Department of Agriculture



**droughtmonitor.unl.edu**