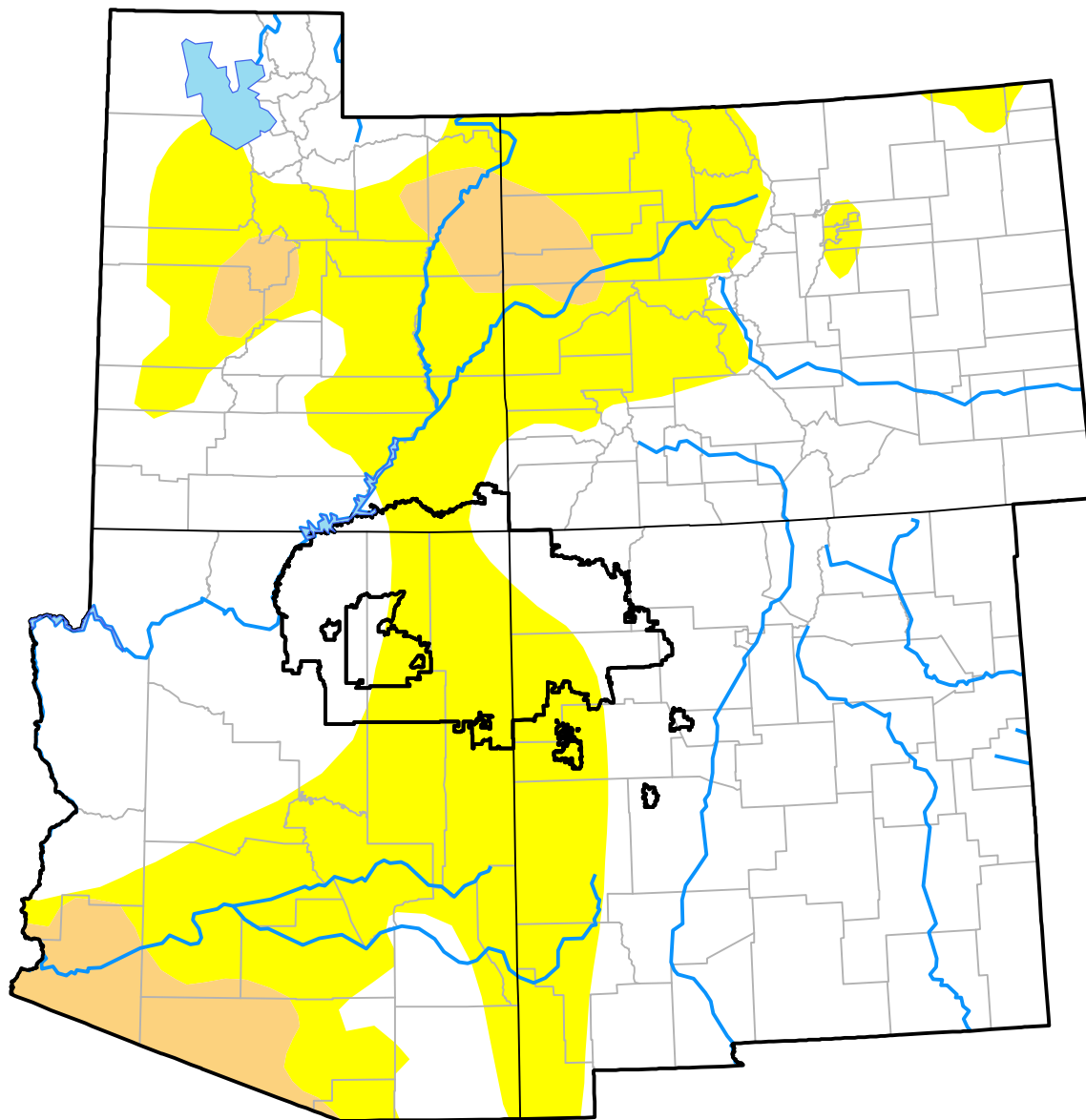


U.S. Drought Monitor Navajo RDEWS

September 26, 2017
(Released Thursday, Sep. 28, 2017)
Valid 8 a.m. EDT



Drought Conditions (Percent Area)

	None	D0	D1	D2	D3	D4
Current	47.70	52.30	0.00	0.00	0.00	0.00
Last Week 09-21-2017	99.57	0.43	0.00	0.00	0.00	0.00
3 Months Ago 06-29-2017	97.65	2.35	0.00	0.00	0.00	0.00
Start of Calendar Year 01-05-2017	41.25	37.37	21.38	0.00	0.00	0.00
Start of Water Year 09-29-2016	2.59	65.13	32.28	0.00	0.00	0.00
One Year Ago 09-29-2016	2.59	65.13	32.28	0.00	0.00	0.00

Intensity:

None	D2 Severe Drought
D0 Abnormally Dry	D3 Extreme Drought
D1 Moderate Drought	D4 Exceptional Drought

The Drought Monitor focuses on broad-scale conditions. Local conditions may vary. For more information on the Drought Monitor, go to <https://droughtmonitor.unl.edu/About.aspx>

Author:

Brad Rippey
U.S. Department of Agriculture



droughtmonitor.unl.edu