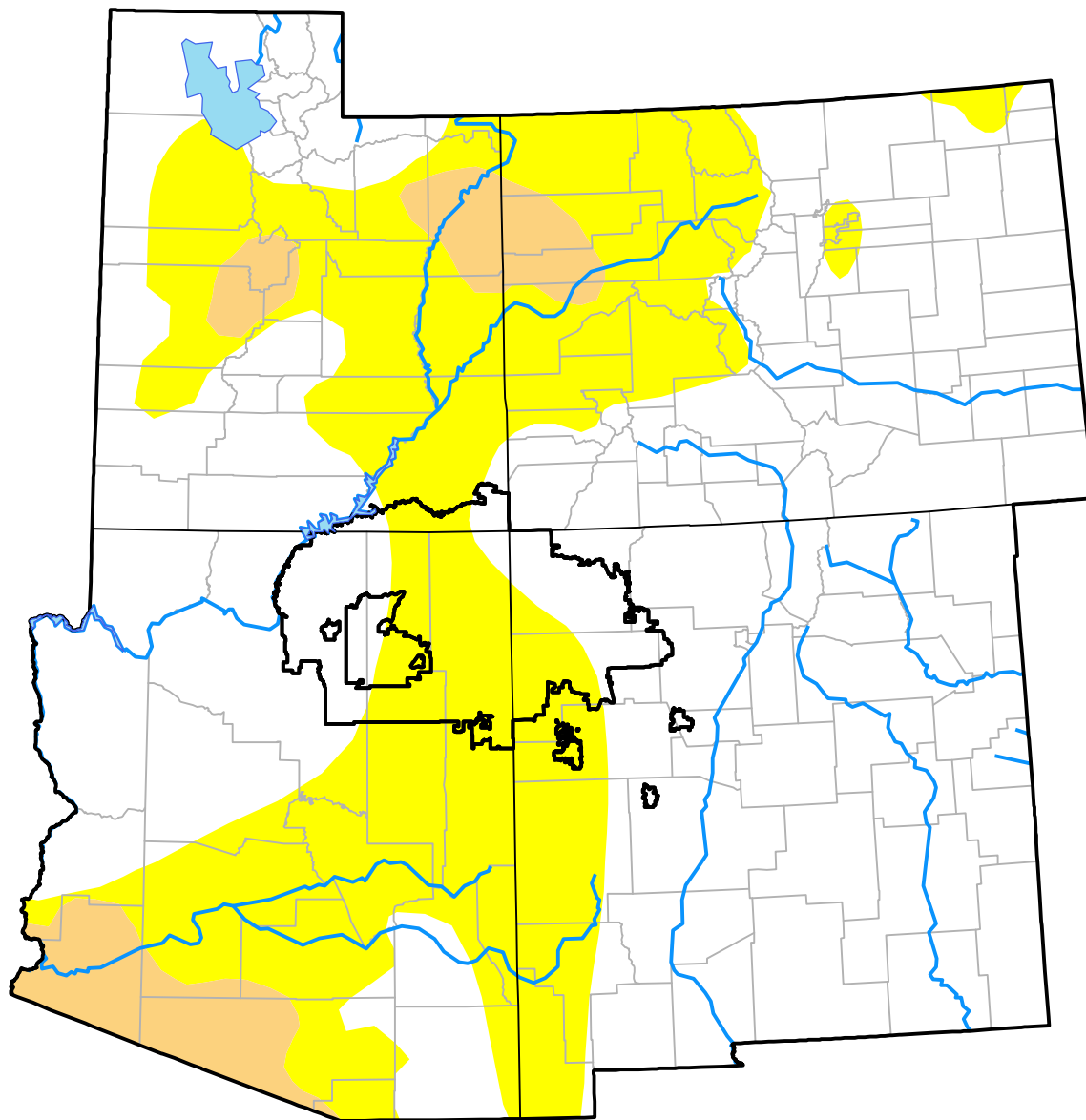


# Nebraska RDEWS and Surrounding Areas

Drought Conditions (Percent Area)

	None	D0	D1	D2	D3	D4
<b>Current</b>	63.16	31.50	5.35	0.00	0.00	0.00
<b>Last Week</b> <i>09-21-2017</i>	71.81	22.85	5.35	0.00	0.00	0.00
<b>3 Months Ago</b> <i>06-29-2017</i>	72.04	18.61	9.29	0.06	0.00	0.00
<b>Start of Calendar Year</b> <i>01-05-2017</i>	46.78	33.57	17.96	1.69	0.00	0.00
<b>Start of Water Year</b> <i>09-29-2016</i>	42.64	40.80	14.95	1.61	0.00	0.00
<b>One Year Ago</b> <i>09-29-2016</i>	42.64	40.80	14.95	1.61	0.00	0.00



**Intensity:**

- None
- D0 Abnormally Dry
- D1 Moderate Drought
- D2 Severe Drought
- D3 Extreme Drought
- D4 Exceptional Drought

The Drought Monitor focuses on broad-scale conditions. Local conditions may vary. For more information on the Drought Monitor, go to <https://droughtmonitor.unl.edu/About.aspx>

**Author:**

Brad Rippey  
U.S. Department of Agriculture

