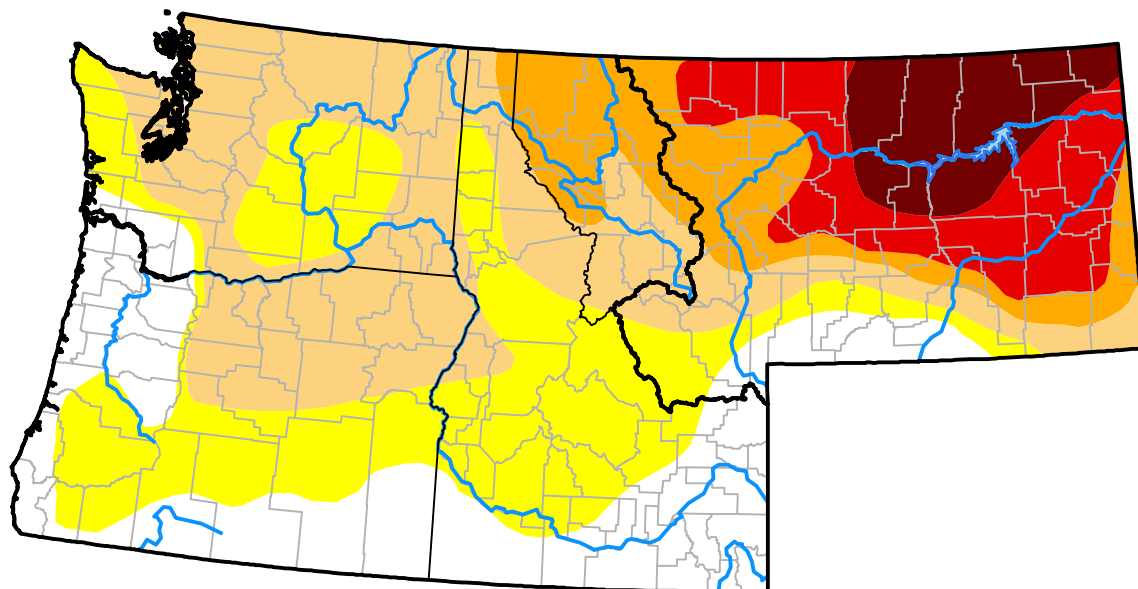


U.S. Drought Monitor

Pacific Northwest RDEWS

September 26, 2017
(Released Thursday, Sep. 28, 2017)
 Valid 8 a.m. EDT



Drought Conditions (Percent Area)

	None	D0-D4	D1-D4	D2-D4	D3-D4	D4
Current	26.16	73.84	40.16	6.10	0.00	0.00
Last Week <i>09-21-2017</i>	11.13	88.87	42.08	6.85	0.00	0.00
3 Months Ago <i>06-29-2017</i>	100.00	0.00	0.00	0.00	0.00	0.00
Start of Calendar Year <i>01-05-2017</i>	81.28	18.72	3.23	0.00	0.00	0.00
Start of Water Year <i>09-29-2016</i>	3.39	96.61	28.73	5.43	0.00	0.00
One Year Ago <i>09-29-2016</i>	3.39	96.61	28.73	5.43	0.00	0.00

Intensity:

None	D2 Severe Drought
D0 Abnormally Dry	D3 Extreme Drought
D1 Moderate Drought	D4 Exceptional Drought

The Drought Monitor focuses on broad-scale conditions. Local conditions may vary. For more information on the Drought Monitor, go to <https://droughtmonitor.unl.edu/About.aspx>

Author:

Brad Rippey
 U.S. Department of Agriculture



droughtmonitor.unl.edu