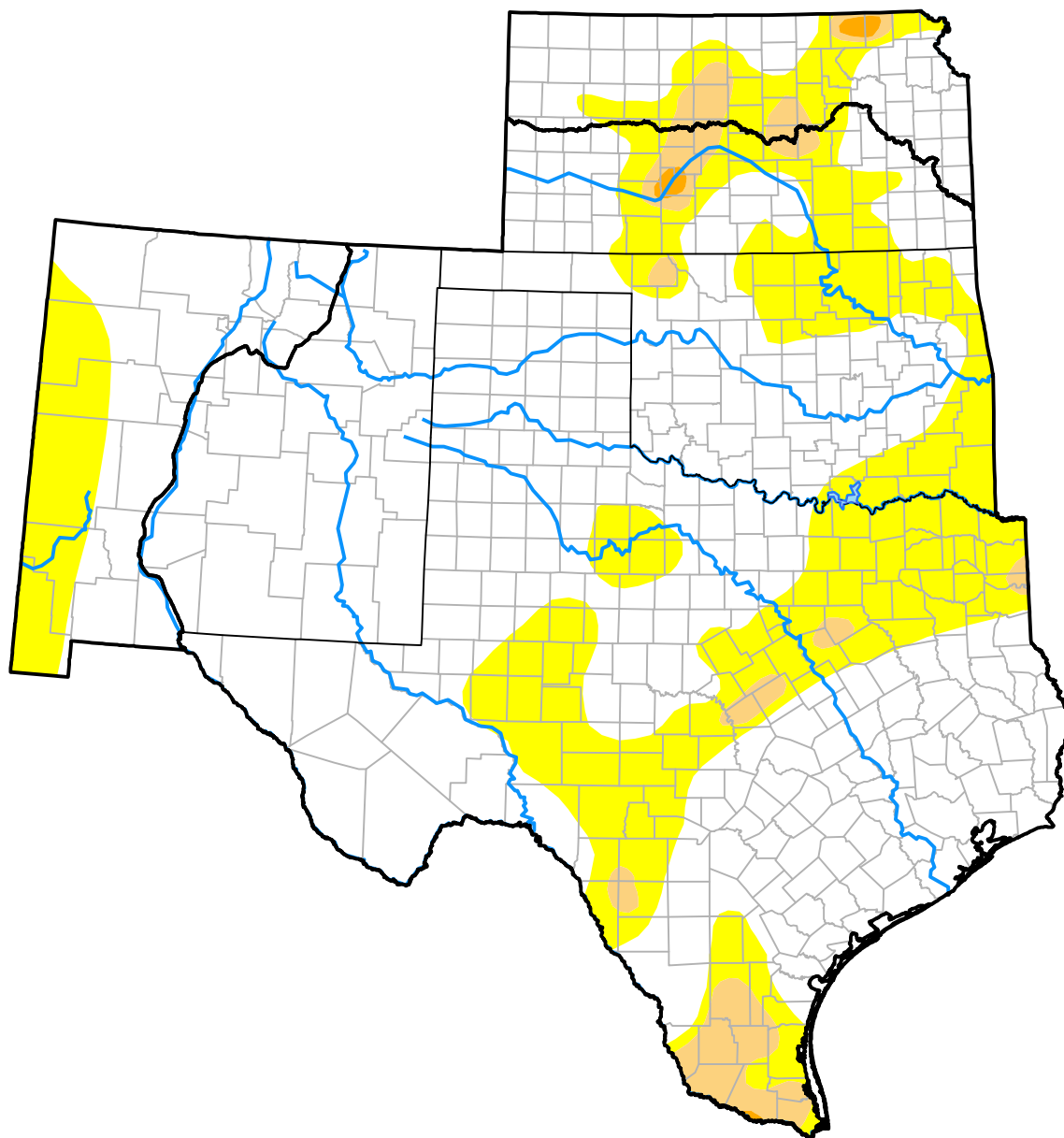


U.S. Drought Monitor

Southern Plains RDEWS

September 26, 2017
(Released Thursday, Sep. 28, 2017)
 Valid 8 a.m. EDT



Drought Conditions (Percent Area)

	None	D0	D1	D2	D3	D4
Current	73.50	23.96	2.52	0.02	0.00	0.00
Last Week <i>09-21-2017</i>	83.56	14.23	2.00	0.21	0.00	0.00
3 Months Ago <i>06-29-2017</i>	69.42	23.48	6.74	0.35	0.00	0.00
Start of Calendar Year <i>01-05-2017</i>	65.81	16.66	7.86	8.80	0.87	0.00
Start of Water Year <i>09-29-2016</i>	78.11	17.59	3.83	0.47	0.00	0.00
One Year Ago <i>09-29-2016</i>	78.11	17.59	3.83	0.47	0.00	0.00

Intensity:

None	D2 Severe Drought
D0 Abnormally Dry	D3 Extreme Drought
D1 Moderate Drought	D4 Exceptional Drought

The Drought Monitor focuses on broad-scale conditions. Local conditions may vary. For more information on the Drought Monitor, go to <https://droughtmonitor.unl.edu/About.aspx>

Author:

Brad Rippey
 U.S. Department of Agriculture



droughtmonitor.unl.edu